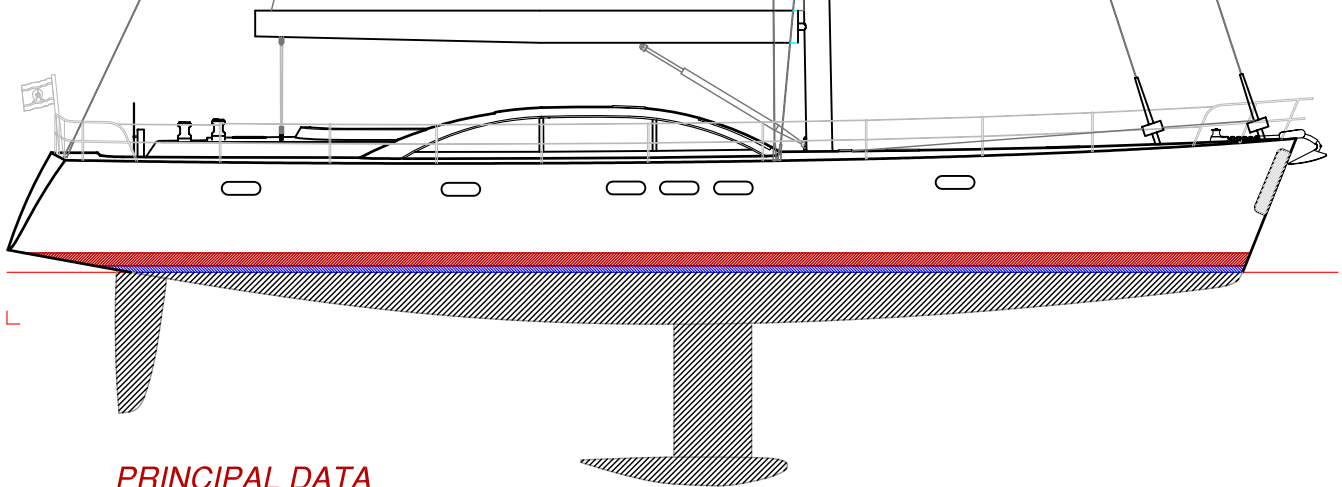
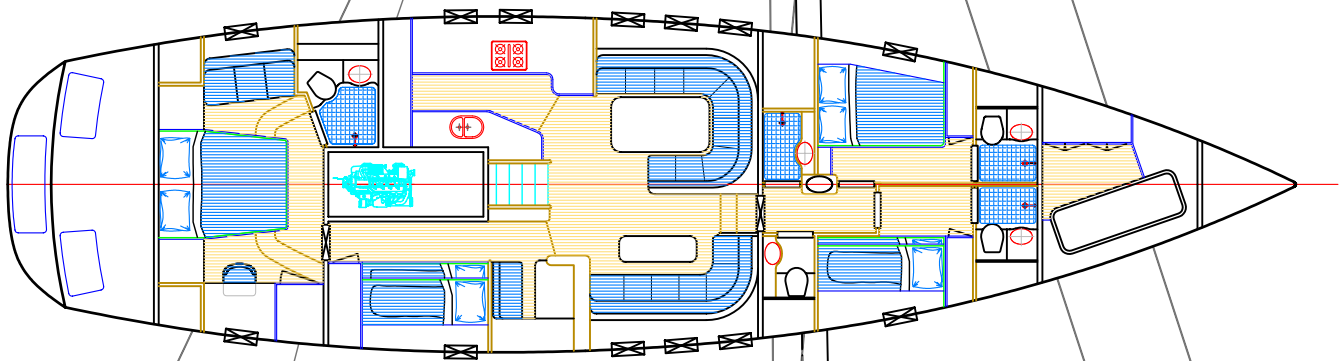
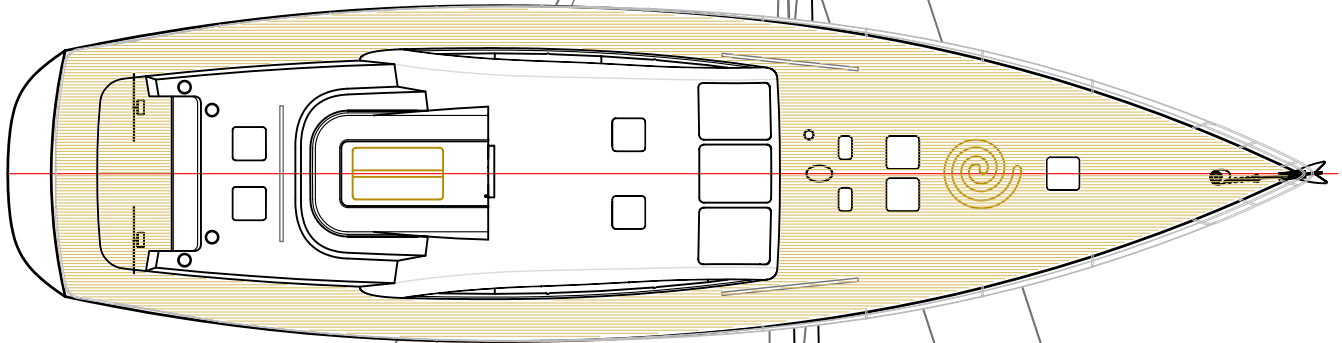
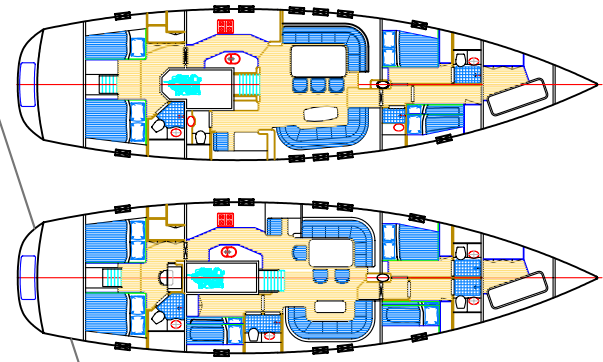


mW65 racer / cruiser



PRINCIPAL DATA

L.O.A. 19.9	Ballast 9000kg	Genset 15kVa	Complement 7+2	I 22.0m
L.W.L 17.4m	Draft 2.15m up	Fuel 1800lts	Main 94.4m ²	P 19.6m
Beam 5.2m	Draft 3.35m down	Water 1000lts	Genoa 79.0m ²	J 7.2m
Displ 25000kg	Engine 110kW	Black/Grey Water 750lts		E 8.2m

copyright ©

THIS DRAWING AND/OR SPECIFICATION IS THE PROPERTY OF MARK WILLIAMSON DESIGN PTY LTD. IT IS NOT TO BE USED BY OR DISCLOSED TO ANY THIRD PERSON WITHOUT THE EXPRESSED PERMISSION OF MARK WILLIAMSON DESIGN PTY LTD.

MARK WILLIAMSON DESIGN

Consulting Naval Architects & Mechanical Engineers

48 Sweetgum St, Ashmore, Queensland 4214, Australia
Ph: 617 5597 3521 Fax: 617 5597 3529 www.mwdesign.net.au

VESSEL: mW65 RACER/CRUISER

TITLE: GENERAL ARRANGEMENT

DWG No: mW65rc-100

SCALE:

DATE: 6/8/2003

DRAWN: MDW