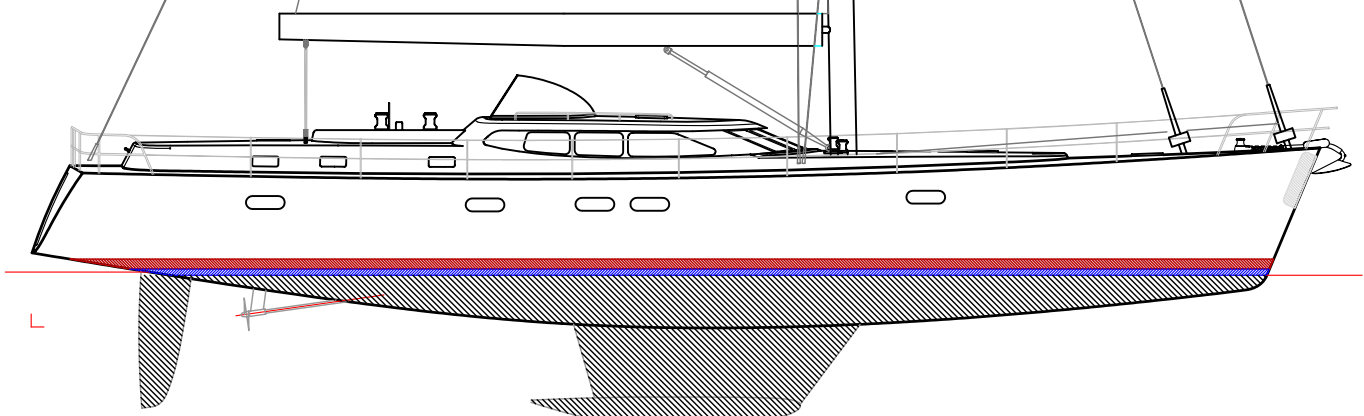
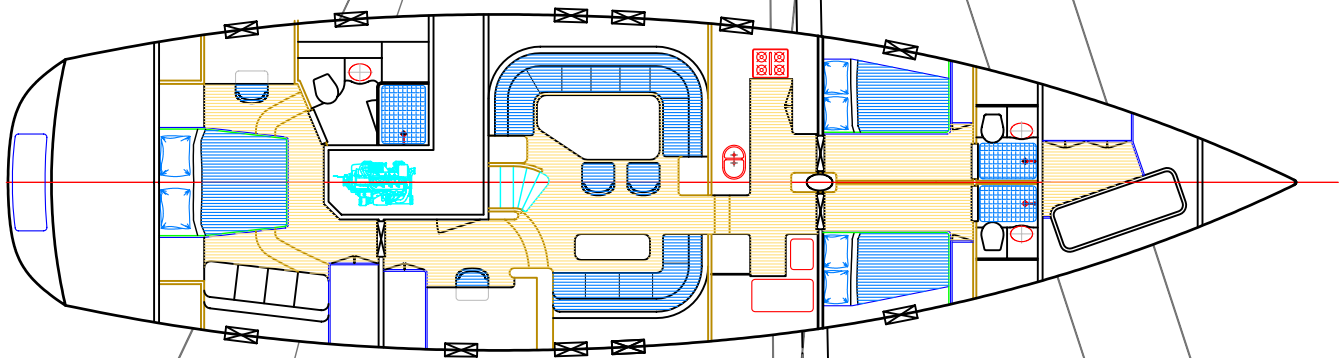
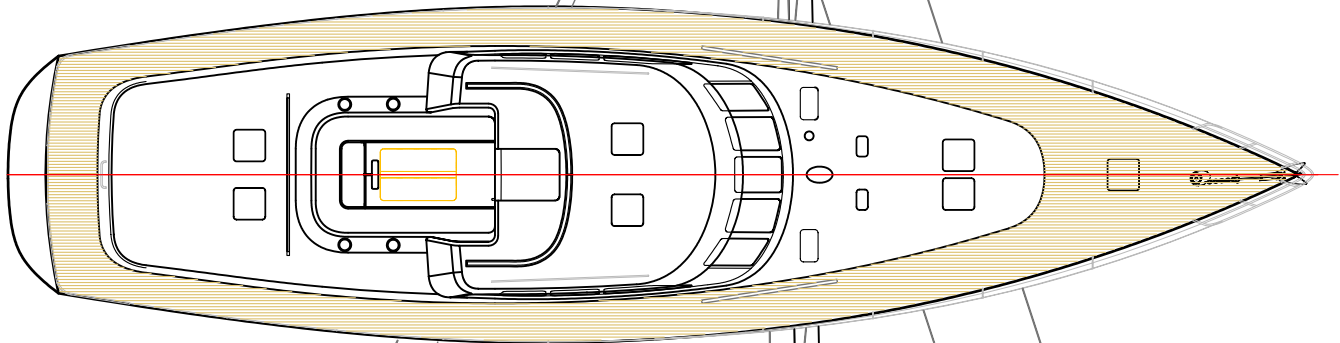
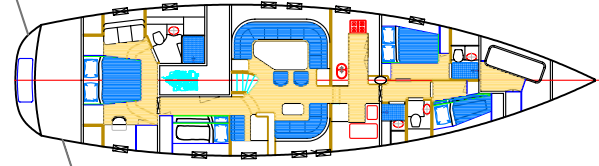
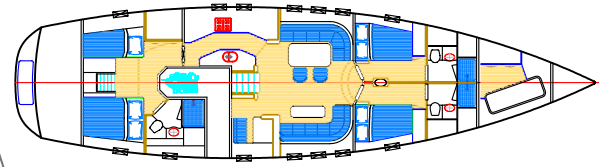


mW65 bluewater cruiser



PRINCIPAL DATA

L.O.A. 19.9	Ballast 9000kg	Fuel 2500lts	Main 94.4m ²	P 19.6m
L.W.L 17.4m	Draft 2.35m	Water 1000lts	Genoa 79.0m ²	J 7.2m
Beam 5.2m	Engine 110kW	Black Water 250lts	I 22.0m	E 8.2m
Displ 25000kg	Genset 15kVa	Grey Water 250lts		

copyright ©

THIS DRAWING AND/OR SPECIFICATION IS THE PROPERTY OF MARK WILLIAMSON DESIGN PTY LTD. IT IS NOT TO BE USED BY OR DISCLOSED TO ANY THIRD PERSON WITHOUT THE EXPRESSED PERMISSION OF MARK WILLIAMSON DESIGN PTY LTD.

MARK WILLIAMSON DESIGN

Consulting Naval Architects & Mechanical Engineers

48 Sweetgum St, Ashmore, Queensland 4214, Australia
Ph: 617 5597 3521 Fax: 617 5597 3529 www.mwdesign.net.au

VESSEL: mW65 BLUEWATER CRUISER

TITLE: GENERAL ARRANGEMENT

DWG No: mW65bwc-100

SCALE:

DATE: 23/7/2003

DRAWN: MDW