

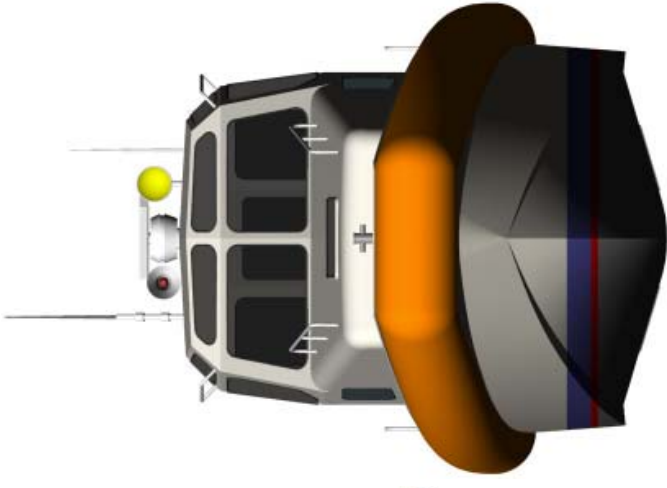
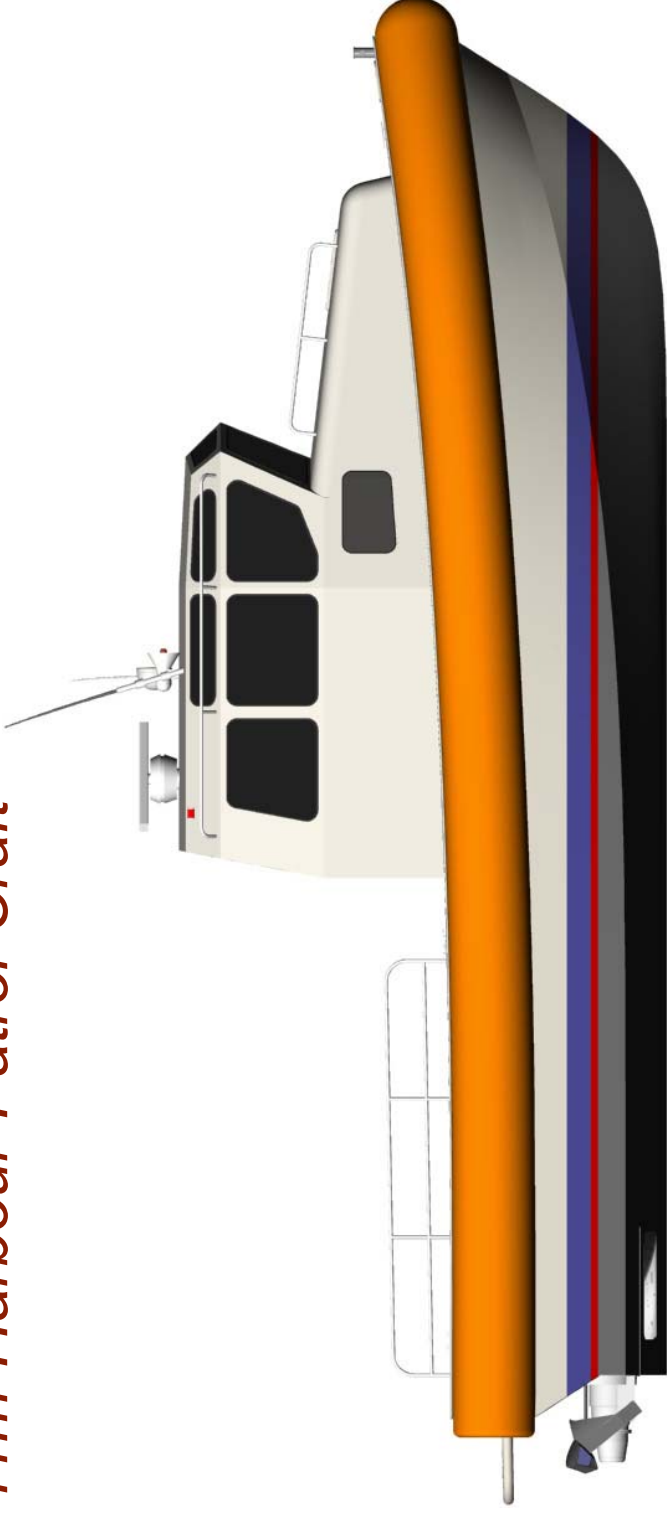
# 11m Harbour Patrol Craft



**Mark Williamson Design**  
48 Sweetgum St, Ashmore Qld 4214, Australia  
Ph: (617) 5597 3521 Fax: (617) 5597 3529 [www.mwdesign.net.au](http://www.mwdesign.net.au)



# 11m Harbour Patrol Craft



LOA : 10.9m  
LWL : 9.0m  
Beam : 3.4m  
Draft : 0.5m  
Fuel : 2 x 550lbs  
Power : 2 x 235kW  
Speed : 38.8 knots  
Aft Deck: 13.3sqm

Classification :  
DNV ✕1A1 HSLC R3 PATROL

Construction :  
Marine Grade Aluminium



**Mark Williamson Design**  
48 Sweetgum St, Ashmore Qld 4214, Australia  
Ph: (617) 5597 3521 Fax: (617) 5597 3529 [www.mwdesign.net.au](http://www.mwdesign.net.au)

## Vessel Description

# 11m Harbour Patrol Craft

**VESSEL TYPE:** High Speed Aluminium planing monohull

### PPRINCIPAL DATA:

Length Overall	10.9 metres
Length WL	9.0 metres
Beam	3.4 metres
Draft	0.5 metres
Construction	Marine Grade Aluminium
Class Standard	DNV ✕1A1 HSLC R3 PATROL
Survey	USL 2B
Main Engines	2 x CUMMINS 6BTA5.9-M 235kW @ 2800rpm
Gearbox	2 x ZF220
Propulsion	2 x Hamilton Waterjet HJ242
Auxiliary	10kW Yanmar
Loiter Propulsion	Whisper Boat Electric Propulsion System Permanent magnet "Pancake" Motor, 60V 13.2kW
Maximum Speed	38.8 knots
Loiter Speed	5 knots
Fuel Capacity	2 x 550 litres
Freshwater	200 litres
Crew	2
Personnel Capacity	10

### STRUCTURE:

Materials (to be inspected as required by Survey Authority and Owners Representative):

Sheet and Plate - Grade 5083-H321, H116, 5086-H32. Extrusions - Grade 6061-T6, 6082-T5

Plating: Bottom : 5mm Chine : 8mm Transom : 5mm Side, Collar : 4mm  
Deck, Gunwale : 4mm Deckhouse : 3mm

### OUTFIT AND FINISHING:

The vessel shall be laid out as per the general arrangement drawings and all fittings and equipment required for the operation of the vessel shall be supplied.

Layout: Main Deck: Operations Room, Work Deck  
Fwd Cabin: Galley , Single Berth, Toilet, Shower  
Fitout: Floors: "Aquadeck"  
Lining's: FRP

### Noise Levels

The noise level at the centre of the wheelhouse shall not exceed 65 dB(A).

### AIR CONDITIONING SYSTEM:

Reverse cycle system is based on an water cooled compressor unit linked up to a multiple number of fan coil units. Design of the system shall be based upon an ambient operating temperature of 40°C (95% RH) and sea water of 32°C. Crew spaces to be cooled/heated to 21°C (50% RH).

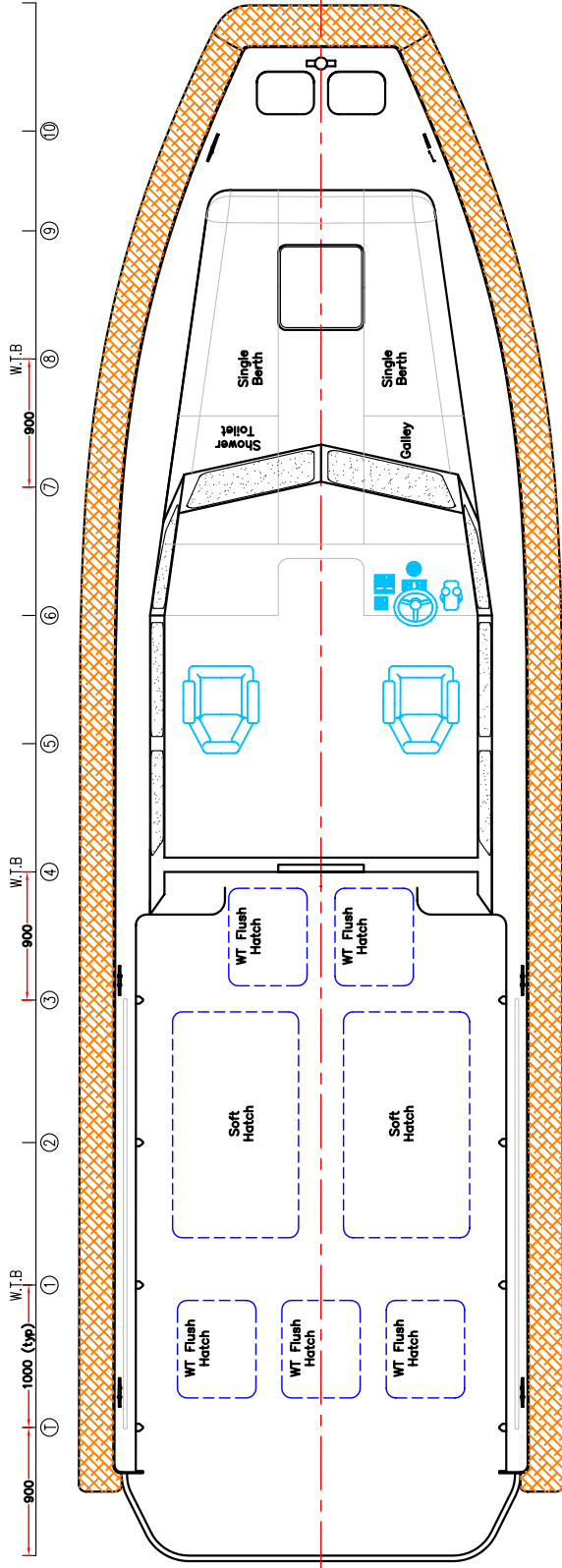
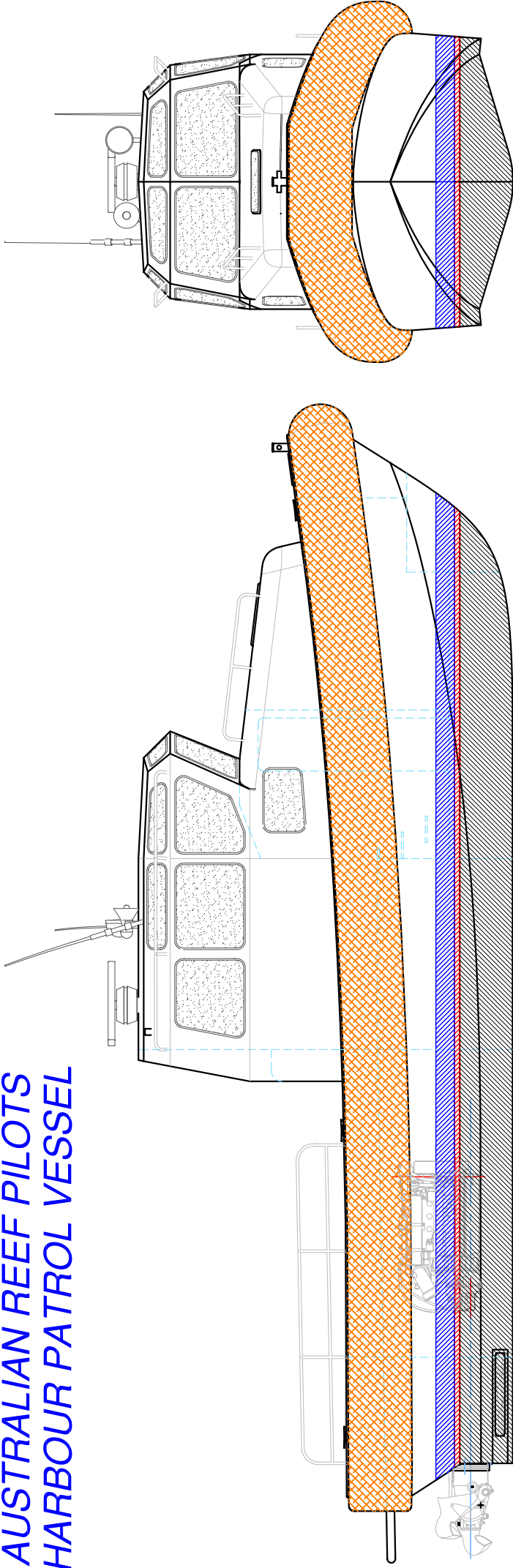
**Mark Williamson Design**

48 Sweetgum St, Ashmore Qld 4214, Australia

Ph: (617) 5597 3521 Fax: (617) 5597 3529 [www.mwdesign.net.au](http://www.mwdesign.net.au)



# AUSTRALIAN REEF PILOTS HARBOUR PATROL VESSEL



## PRINCIPAL PARTICULARS

LOA: 10.9m  
 LWL: 9.0m  
 BEAM: 3.4m  
 DRAFT: 0.5m  
 MAIN ENGINE: 2 x CUMMINS 6BTA-M  
 235kW @ 2800rpm  
 PROPULSION: 2 x HJ242  
 FUEL: 2 x 550lts  
 SPEED: 39knots  
 AFT DECK: 13.3sqm

CLASS STANDARD:  
 DNV 1A1 HSLC R3 PATROL  
 SURVEY: USL 2B

CONSTRUCTION:  
 MARINE GRADE ALUMINIUM

copyright ©  
 THIS DRAWING AND/OR SPECIFICATION  
 IS THE PROPERTY OF MARK WILLIAMSON  
 DESIGN PTY LTD. IT IS NOT TO BE USED  
 BY OR DISCLOSED TO ANY THIRD PERSON  
 WITHOUT THE EXPRESSED PERMISSION  
 OF MARK WILLIAMSON DESIGN PTY LTD.

**MARK WILLIAMSON DESIGN**  
 Consulting Naval Architects & Mechanical Engineers  
 48 Sweetgum St, Ashmore, Queensland 4214, Australia  
 Ph: 617 5597 3521 Fax: 617 5597 3529 [www.mwdesign.net.au](http://www.mwdesign.net.au)

TITLE:	11m HARBOUR PATROL
DWG No:	GENERAL ARRANGEMENT
SCALE:	HP11-100
DATE:	22/7/2004
DRAWN:	MDW