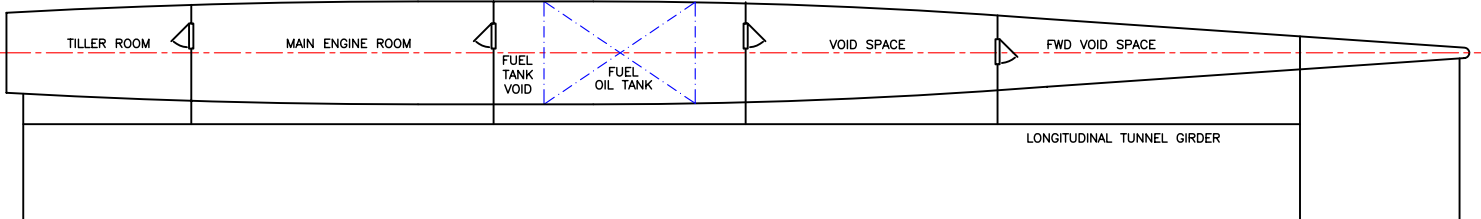
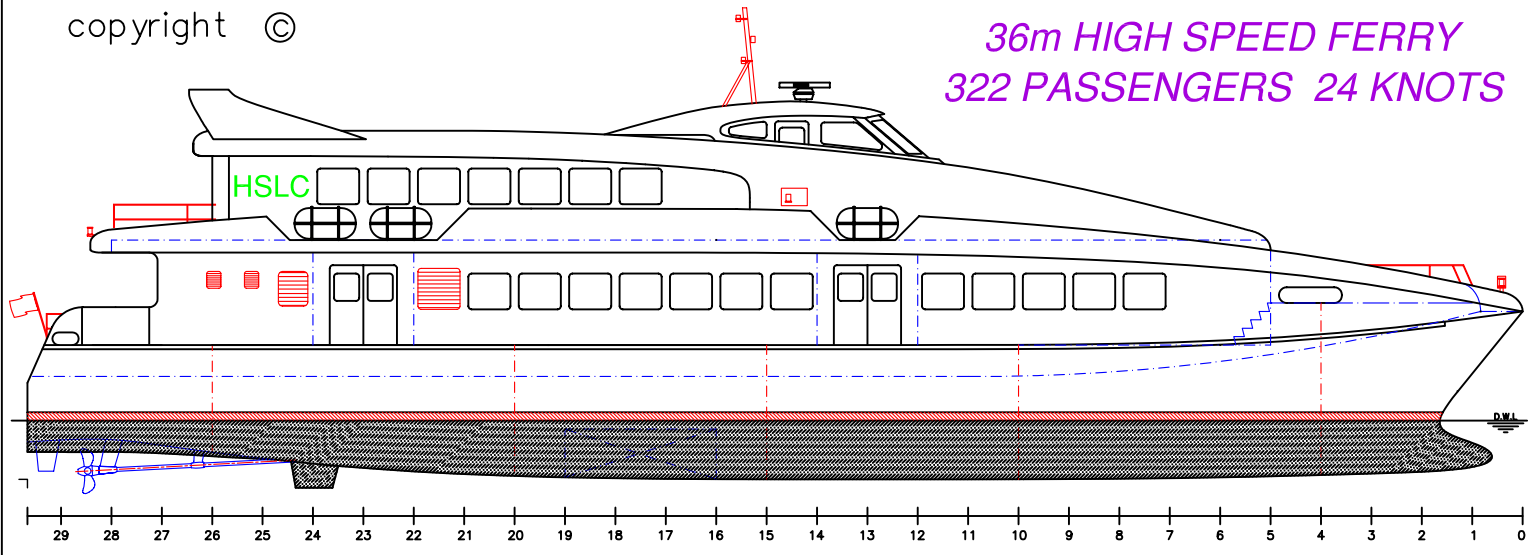
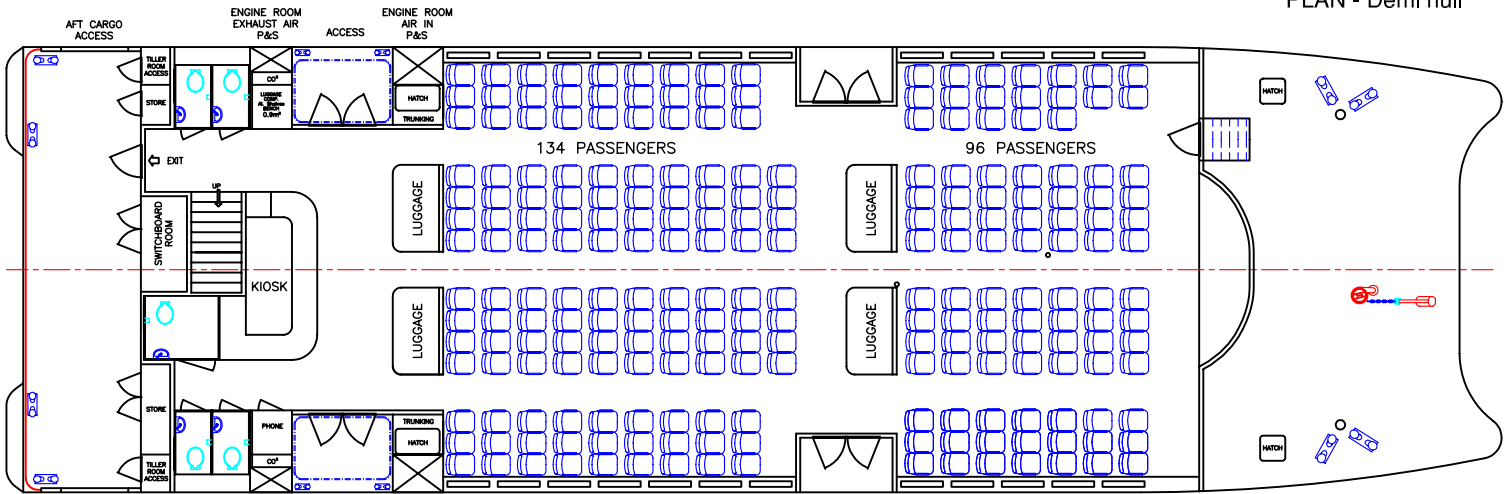


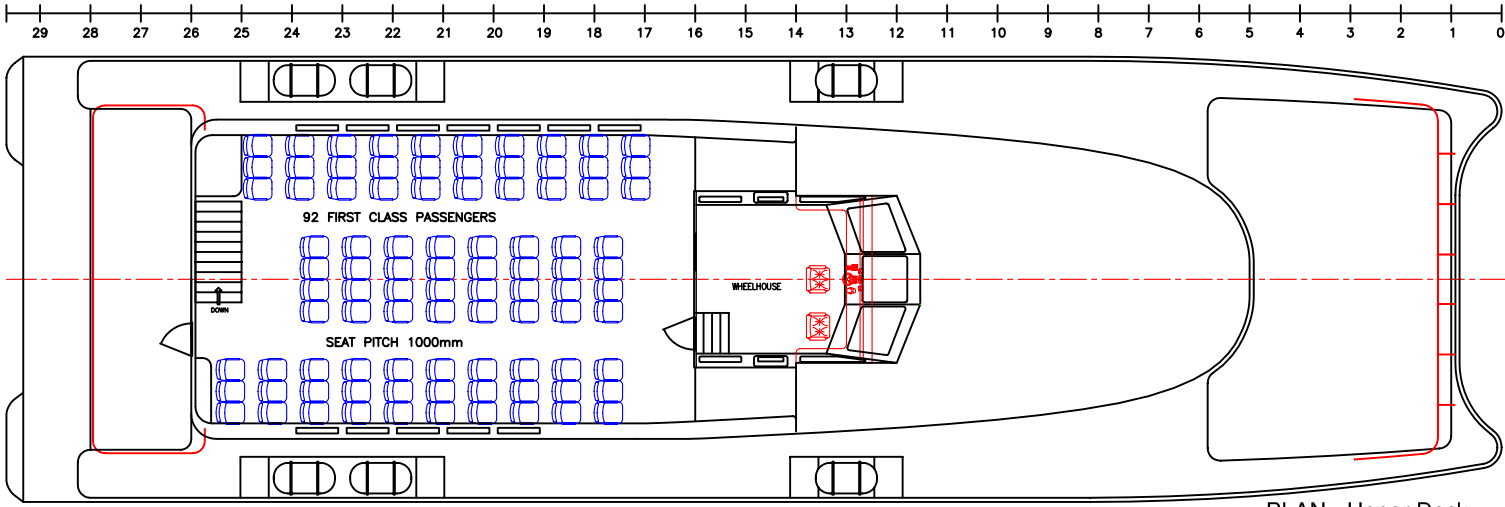
**36m HIGH SPEED FERRY  
322 PASSENGERS 24 KNOTS**



PLAN - Demi hull



PLAN - Main Deck



PLAN - Upper Deck

LOA: 35.6m	FUEL: 4000lts	MAIN ENGINES: 2 x MTU 12V2000 M70
LOP: 34.9m	WATER: 1000lts	788kW @ 2100rpm
BEAM: 10.6m	PASSENGERS: 322	GEARBOX: 2 x ZF BW190V
DRAFT: 1.4m	SPEED: 24 knots	PROPULSION: 42" 4 Blade FPP

VESSEL: 36m CATAMARAN FERRY	
TITLE: GENERAL ARRANGEMENT	
DWG No: 36b-100	SCALE:
DATE: 2/10/2000	DRAWN: MDW