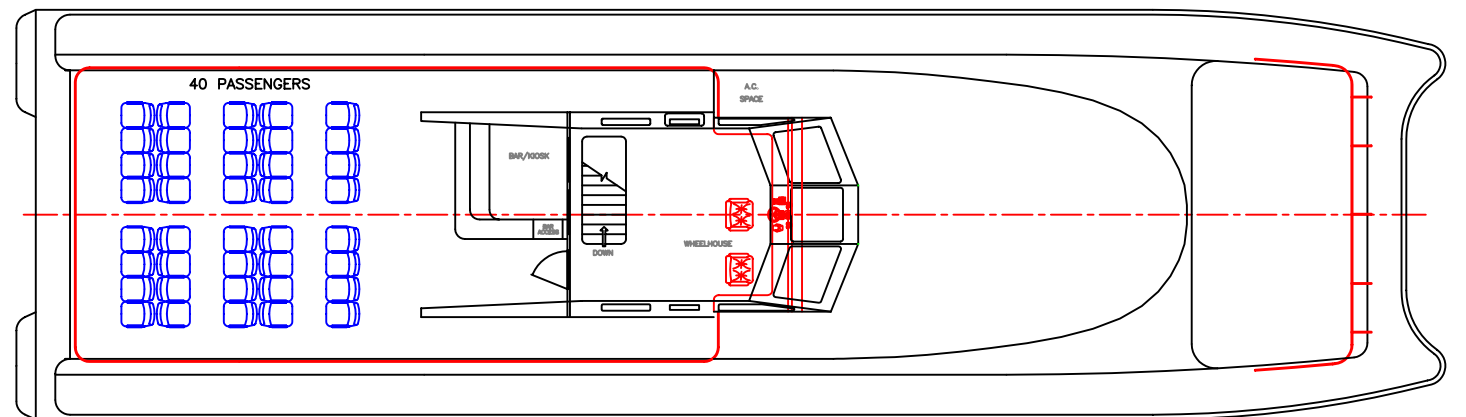
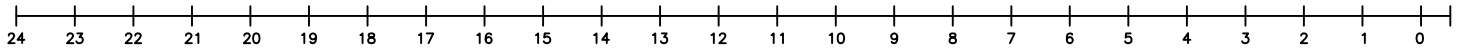
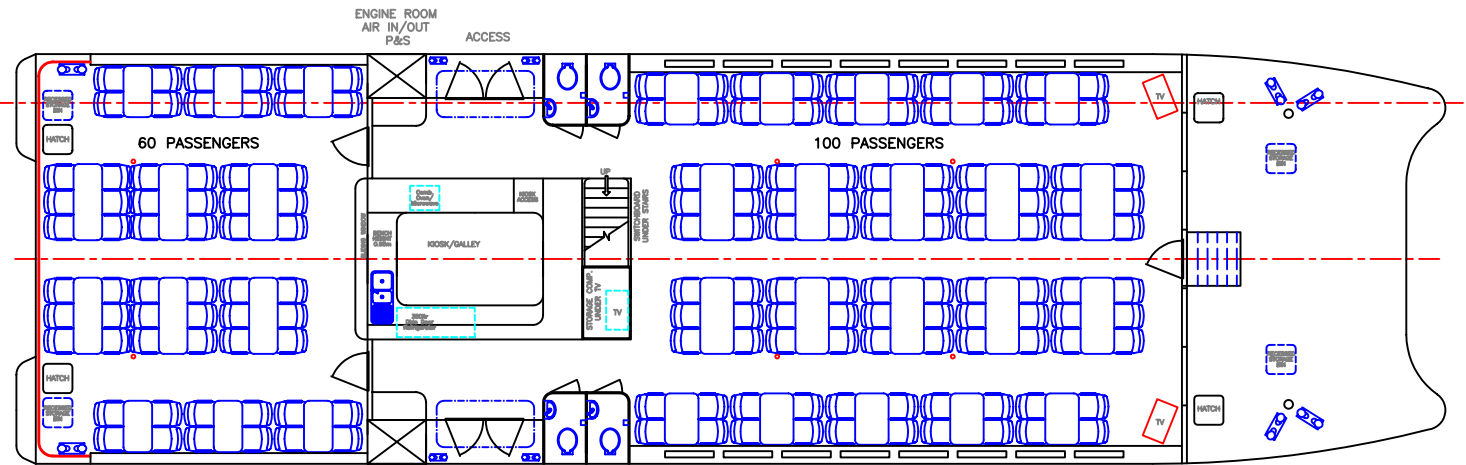
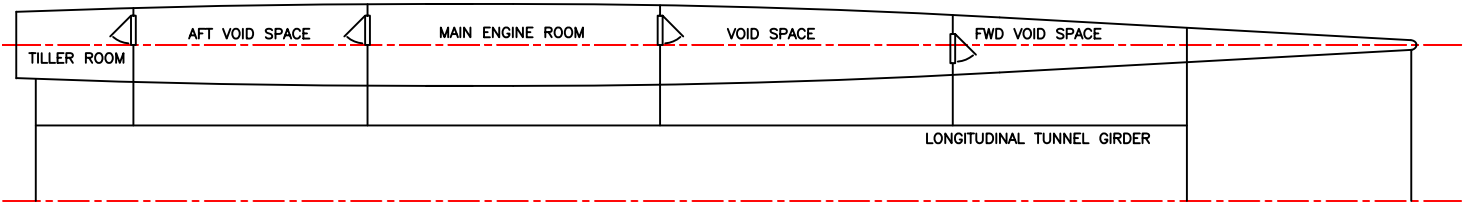
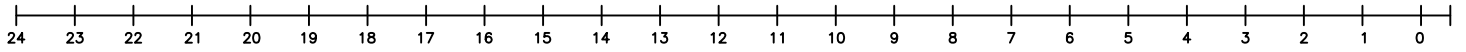
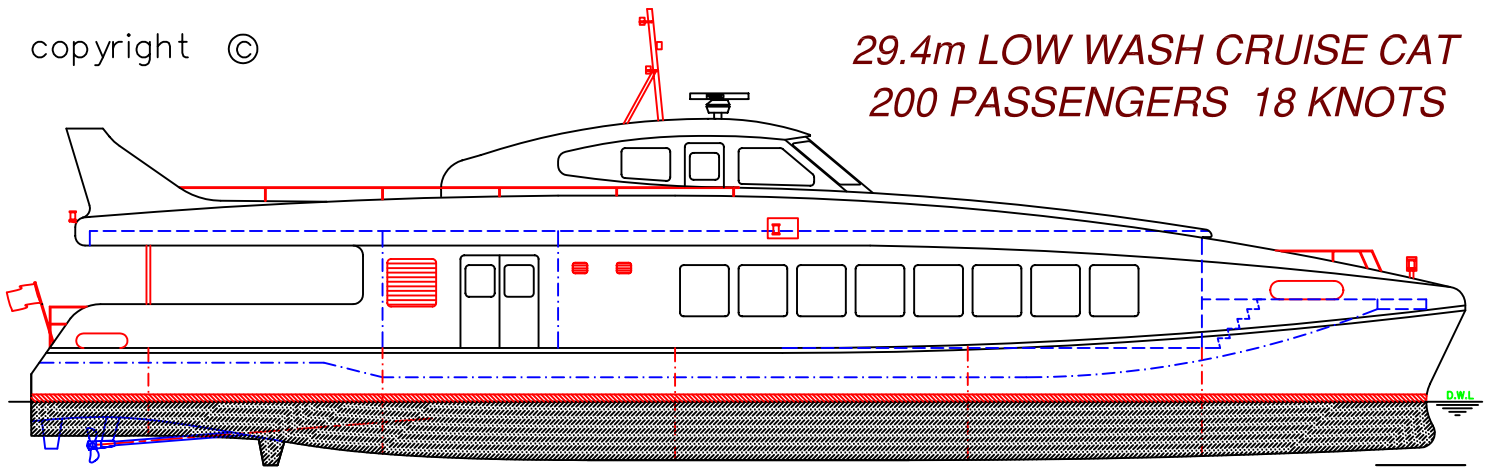


**29.4m LOW WASH CRUISE CAT
200 PASSENGERS 18 KNOTS**



LOA:	29.4m	FUEL:	1500lts	MAIN ENGINES:	2 x Volvo TAMD63L
LOP:	28.7m	WATER:	800lts		173kW @ 2800rpm
BEAM:	8.4m	PASSENGERS:	200	GEARBOX:	ZF IRM220A
DRAFT:	1.2m	SPEED:	18knots	PROPULSION:	Fixed Pitch Props

VESSEL: 29.4m CATAMARAN FERRY	
TITLE: GENERAL ARRANGEMENT	
DWG No: F29L-100	SCALE:
DATE: 31/10/1998	DRAWN: MDW