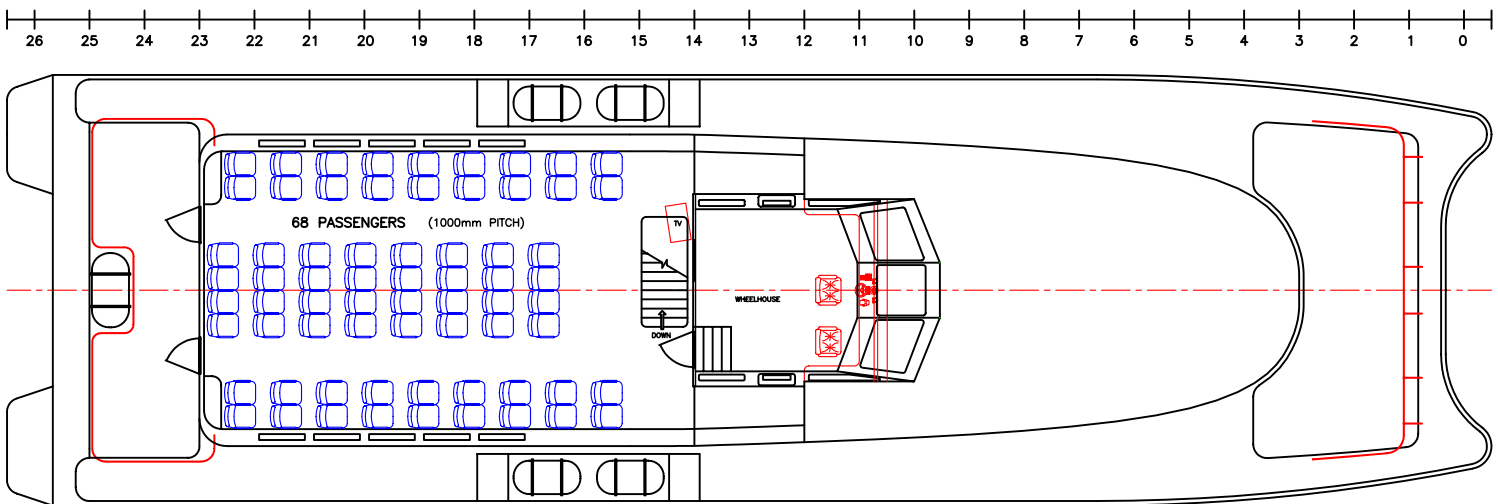
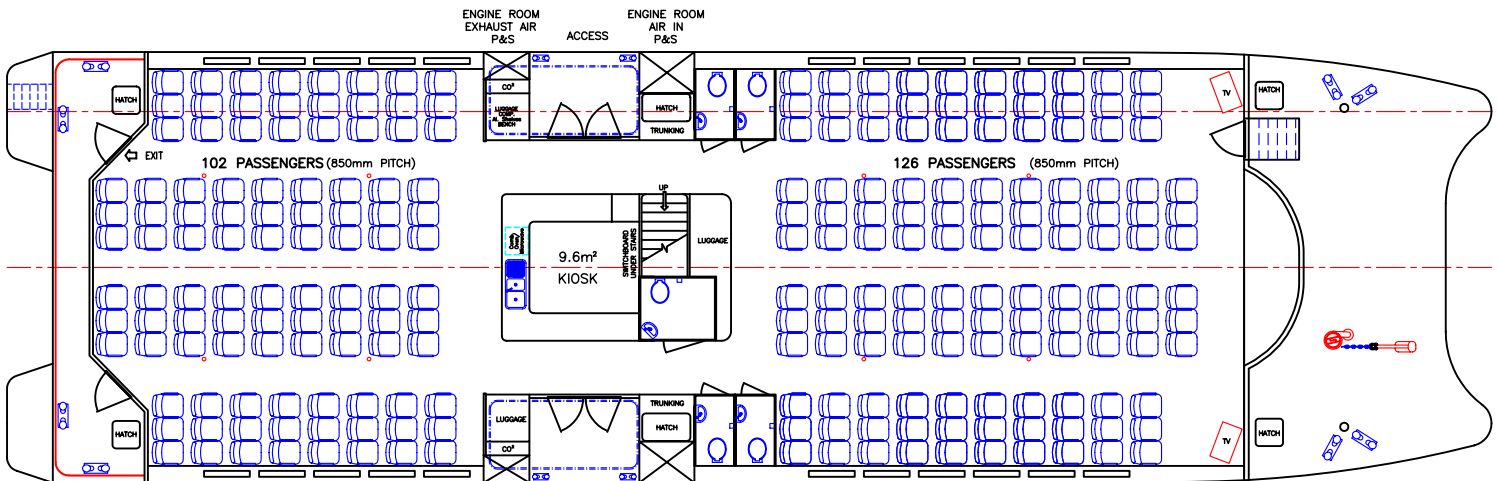
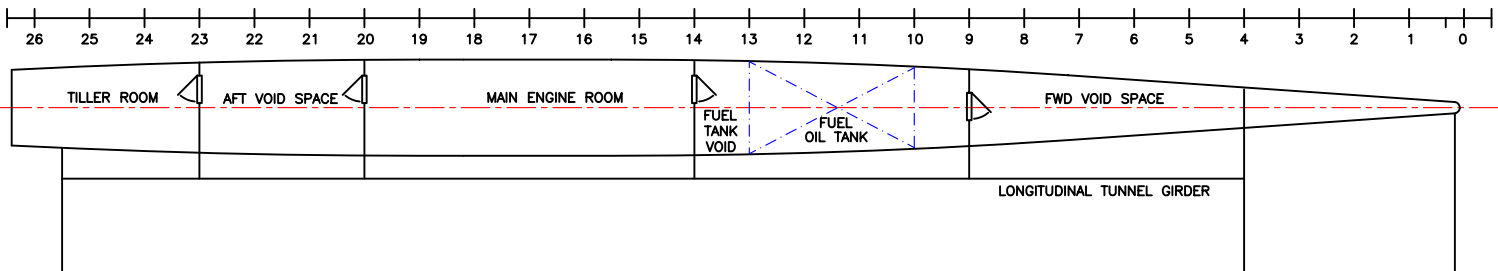
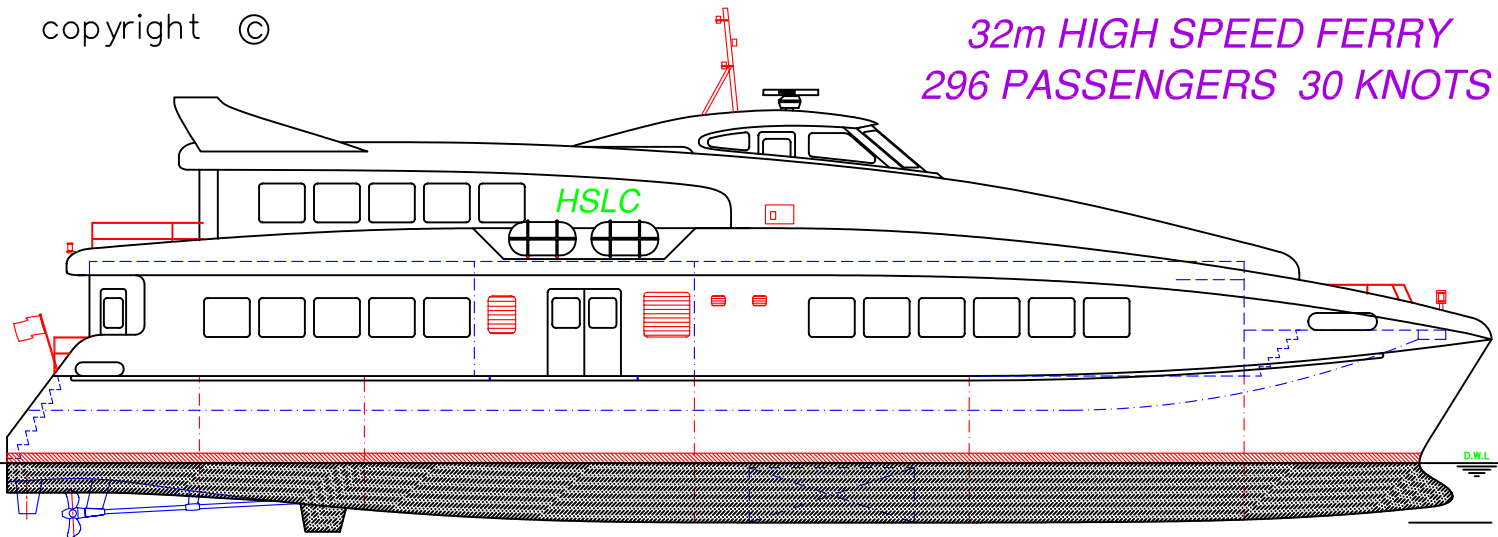


**32m HIGH SPEED FERRY
296 PASSENGERS 30 KNOTS**



LOA:	32.4m	FUEL:	8000lts	MAIN ENGINES:	2 x MTU 16V2000 M70
LOP:	31.7m	WATER:	3000lts		1050kW @ 2100rpm
BEAM:	9.4m	PASSENGERS:	296	GEARBOX:	2 x ZF BW255 (2.462:1)
DRAFT:	1.2m	SPEED:	30.0knots	PROPULSION:	42" 4 Blade FPP