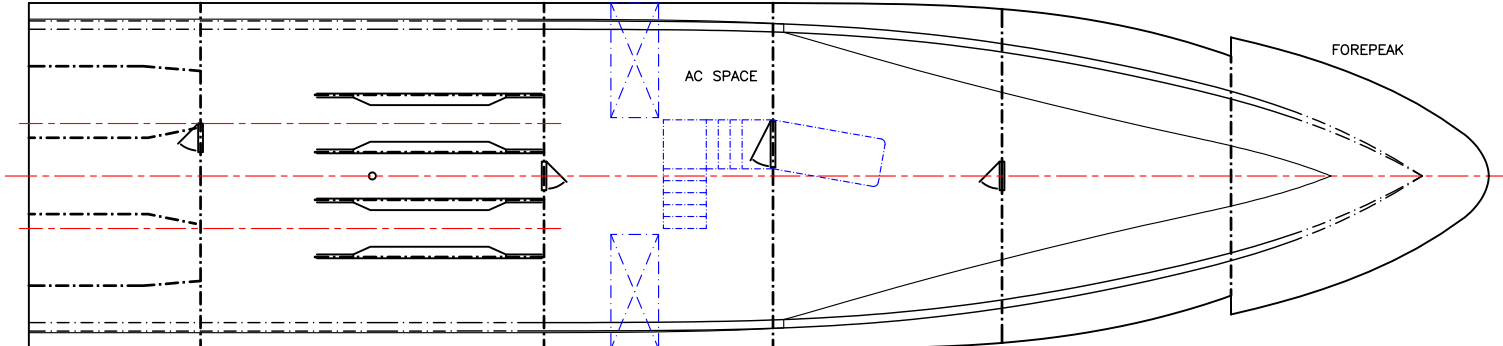
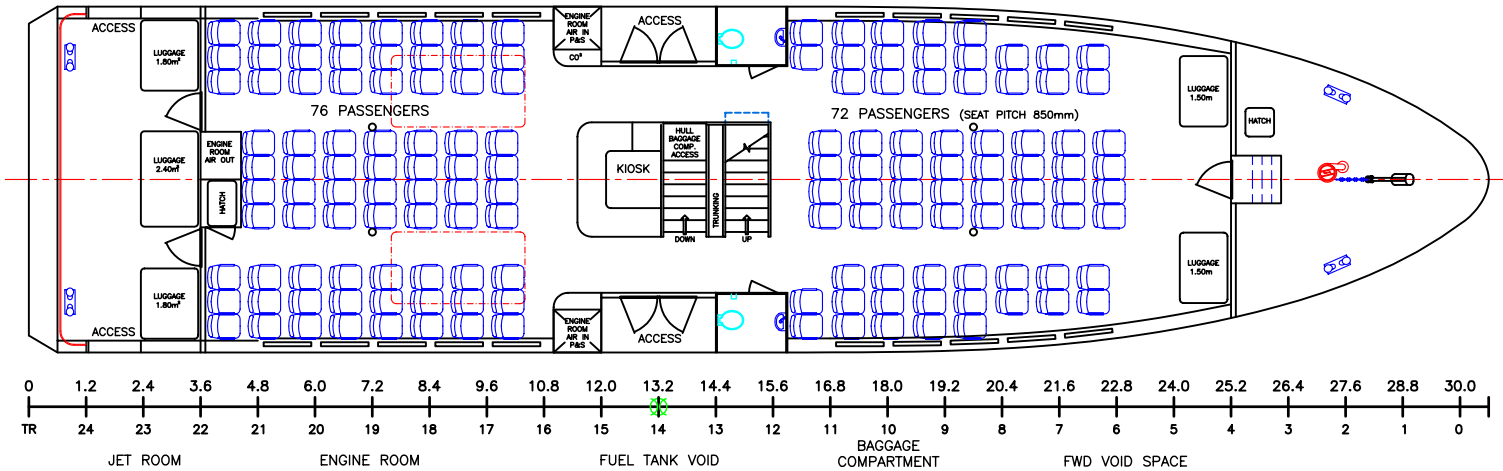
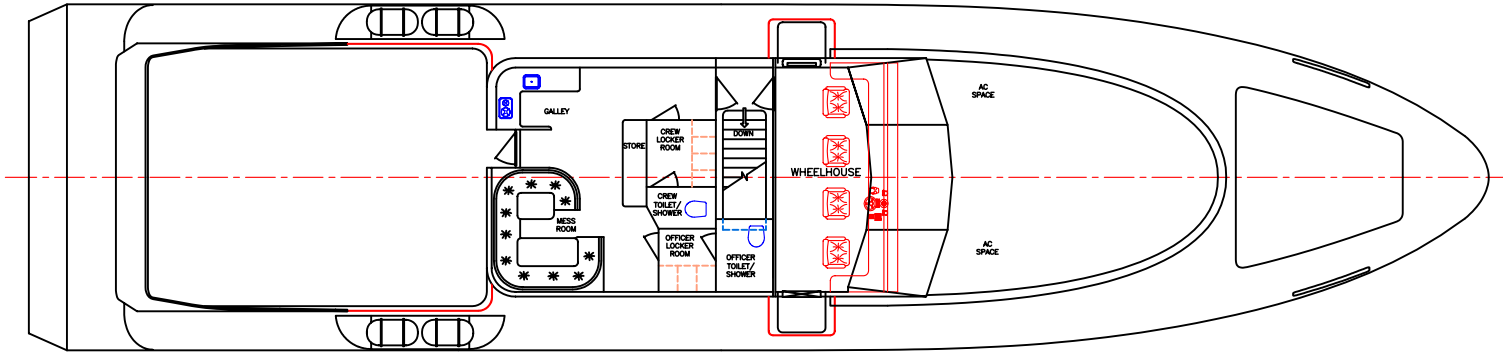
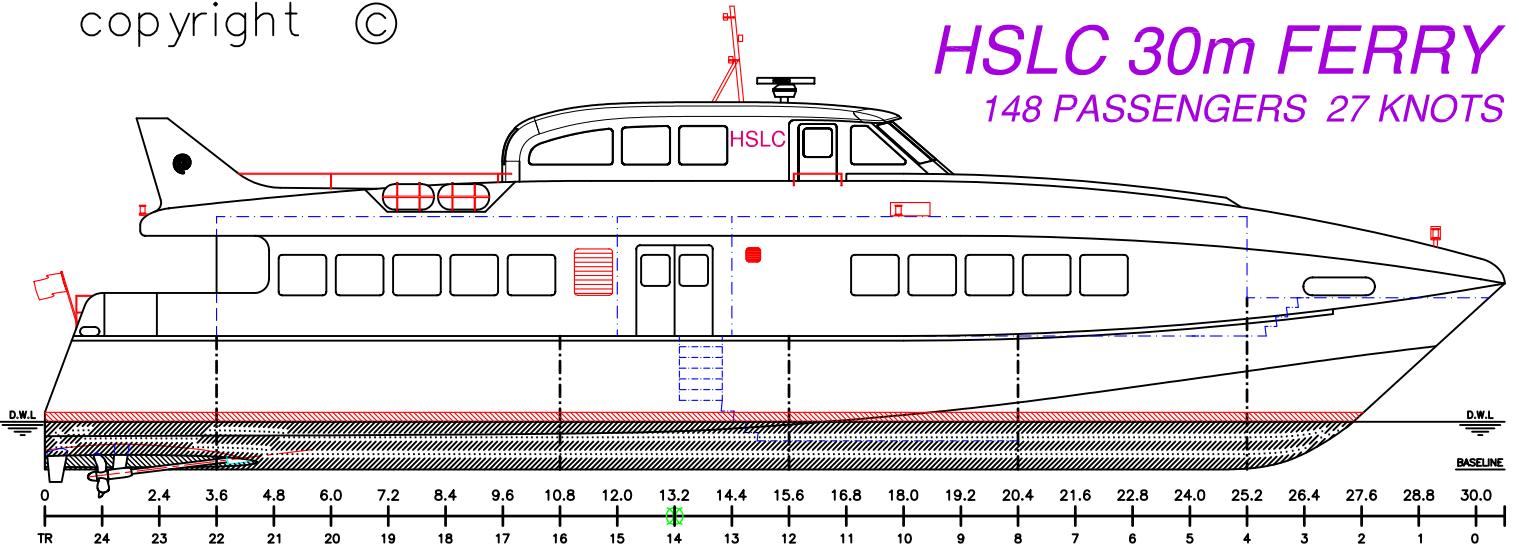


copyright ©

HSLC 30m FERRY

148 PASSENGERS 27 KNOTS



LOA:	30.6m	FUEL:	6000lts	MAIN ENGINES:	2 x MTU 12V2000 M70
LWL:	27.4m	WATER:	500lts		788kW @ 2100rpm
BEAM:	7.25m	PASSENGERS:	148	GEARBOX:	2 x ZF BW250
DRAFT:	0.9m	SPEED:	27knots	PROPULSION:	FIXED PITCH PROP.

copyright ©

MARK WILLIAMSON DESIGN
Consulting Naval Architects & Mechanical Engineers

48 Sweetgum St, Ashmore, Queensland 4214, Australia
 Ph: 617 5597 3521 Fax: 617 5597 3529 E-mail hslc@ozemail.com.au

VESSEL: 30m MONOHULL FERRY	
TITLE: GENERAL ARRANGEMENT	
DWG No: C30M-100	SCALE:
DATE: 4/06/2003	DRAWN: MDW

THIS DRAWING AND/OR SPECIFICATION IS THE PROPERTY OF MARK WILLIAMSON DESIGN PTY LTD. IT IS NOT TO BE USED BY OR DISCLOSED TO ANY THIRD PERSON WITHOUT THE EXPRESSED PERMISSION OF MARK WILLIAMSON DESIGN PTY LTD.