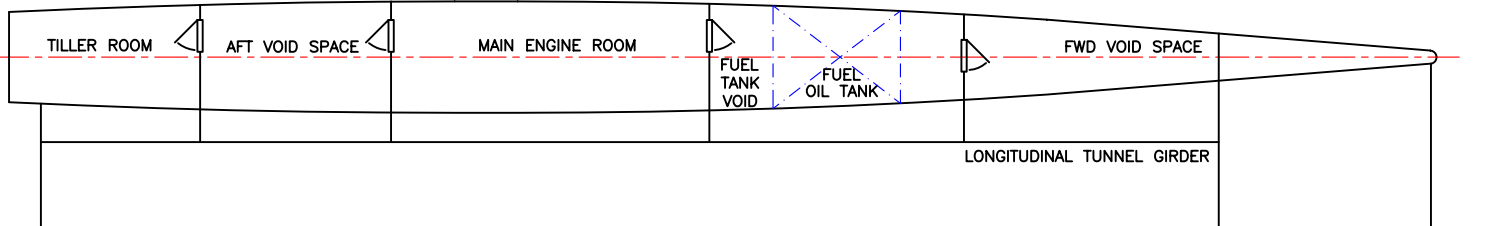
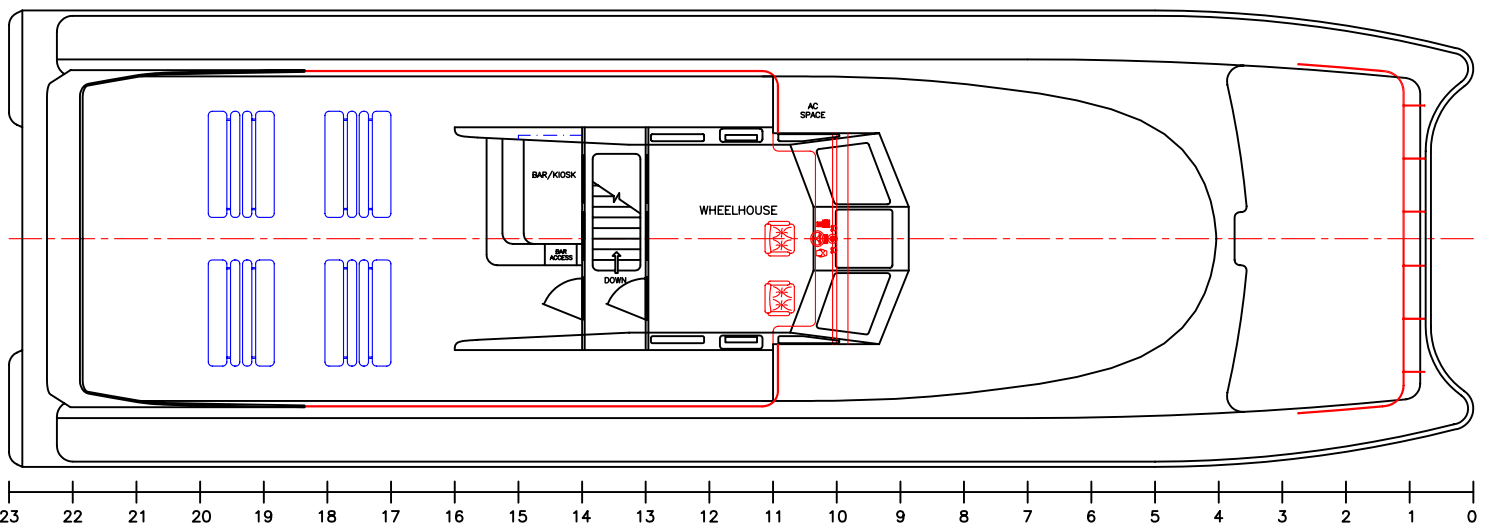
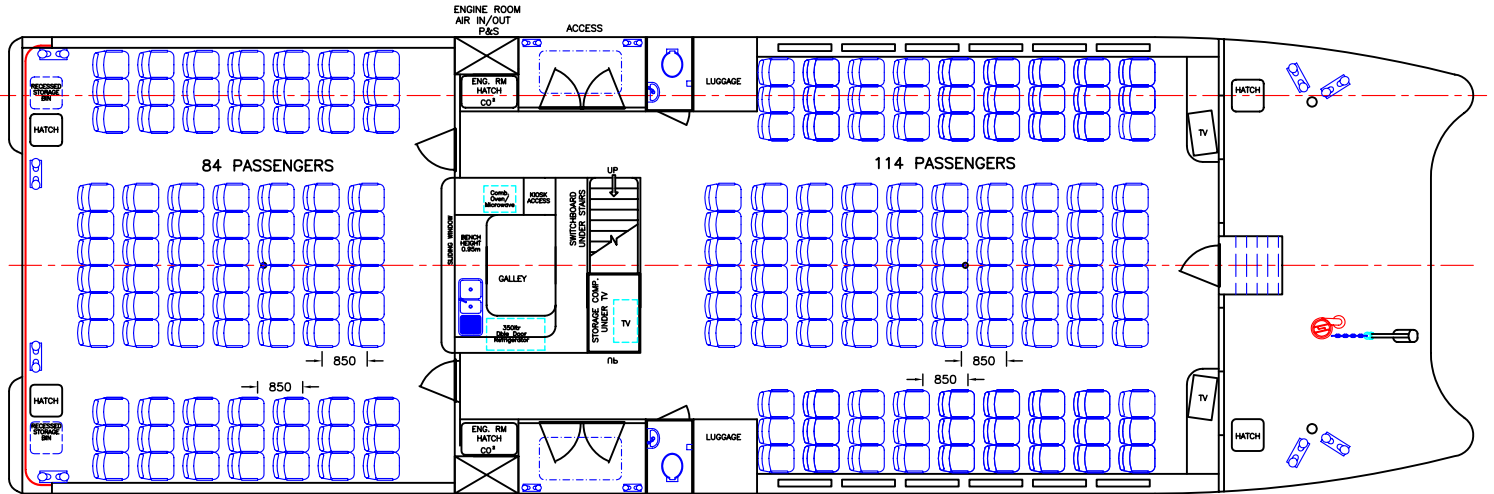
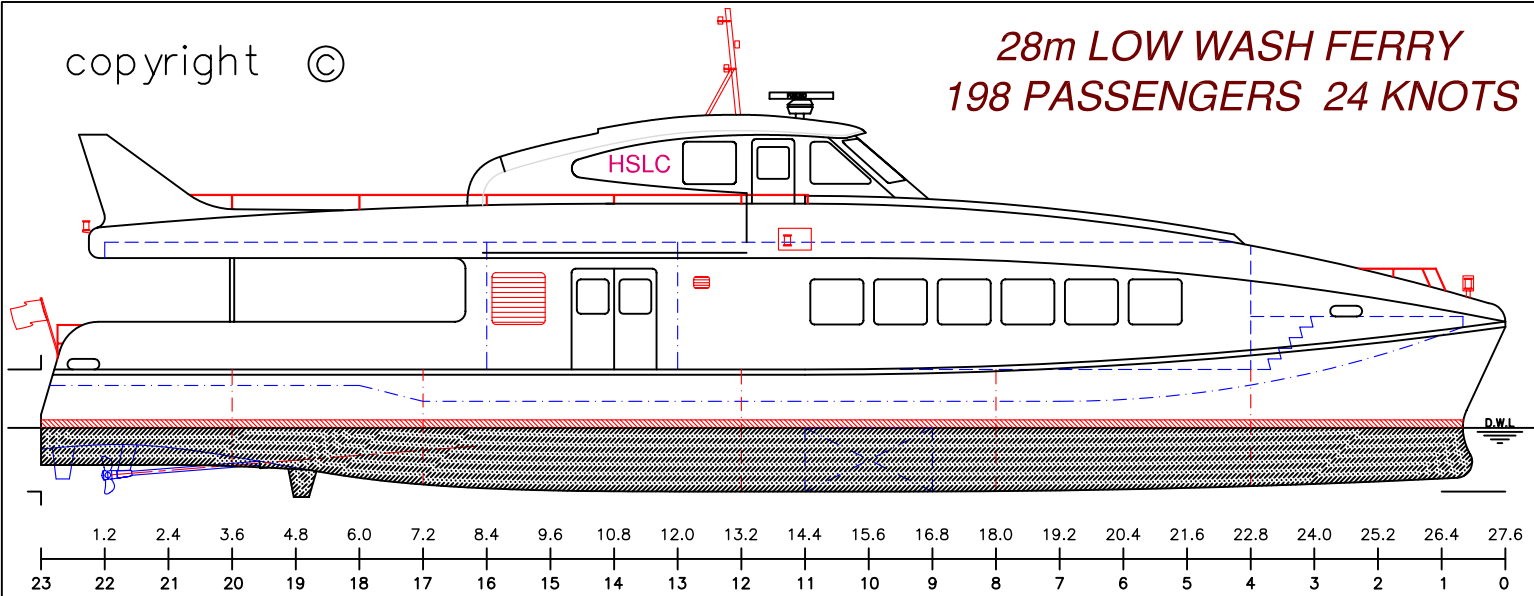


copyright ©

28m LOW WASH FERRY 198 PASSENGERS 24 KNOTS



LOA: 27.6m	FUEL: 2000lts	MAIN ENGINES: 2 x YANMAR 6LY2ASTP
LOP: 27.2m	WATER: 500lts	324kW @ 3300rpm
BEAM: 8.6m	PASSENGERS: 198	GEARBOX: 2 x IRM 350
DRAFT: 1.2m	SPEED: 24knots	PROPULSION: 28" FIXED PITCH PROP.

copyright ©

THIS DRAWING AND/OR SPECIFICATION IS THE PROPERTY OF MARK WILLIAMSON DESIGN PTY LTD. IT IS NOT TO BE USED BY OR DISCLOSED TO ANY THIRD PERSON WITHOUT THE EXPRESSED PERMISSION OF MARK WILLIAMSON DESIGN PTY LTD.

MARK WILLIAMSON DESIGN
Consulting Naval Architects & Mechanical Engineers

48 Sweetgum St, Ashmore, Queensland 4214, Australia
Ph: 617 5597 3521 Fax: 617 5597 3529 www.mwdesign.net.au

VESSEL: 28m CATAMARAN FERRY	
TITLE: GENERAL ARRANGEMENT	
DWG No: F28L-100	SCALE:
DATE: 27/3/2003	DRAWN: MDW