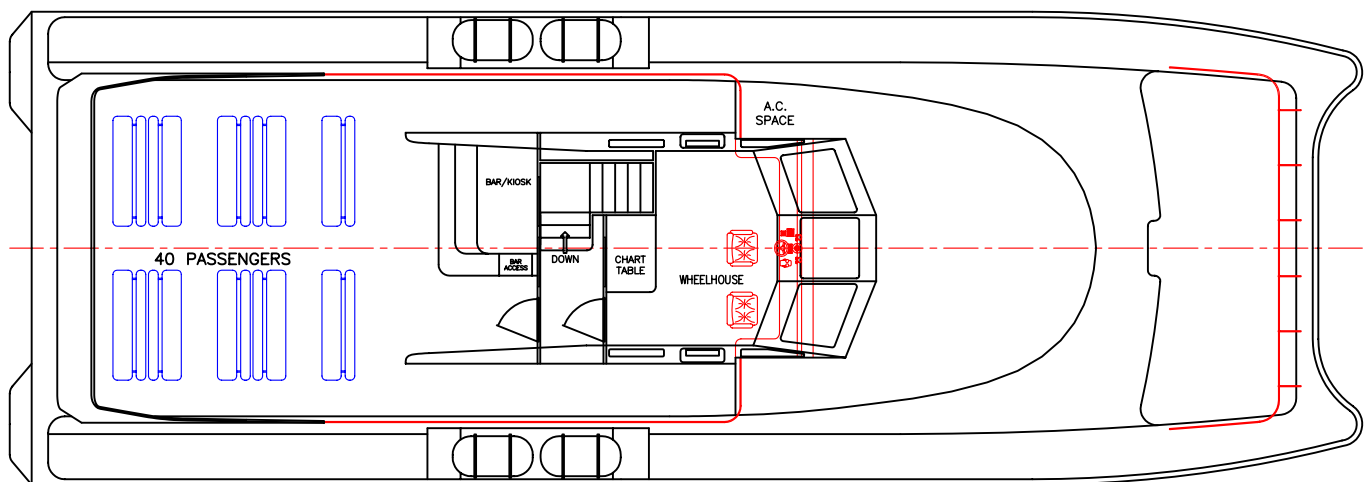
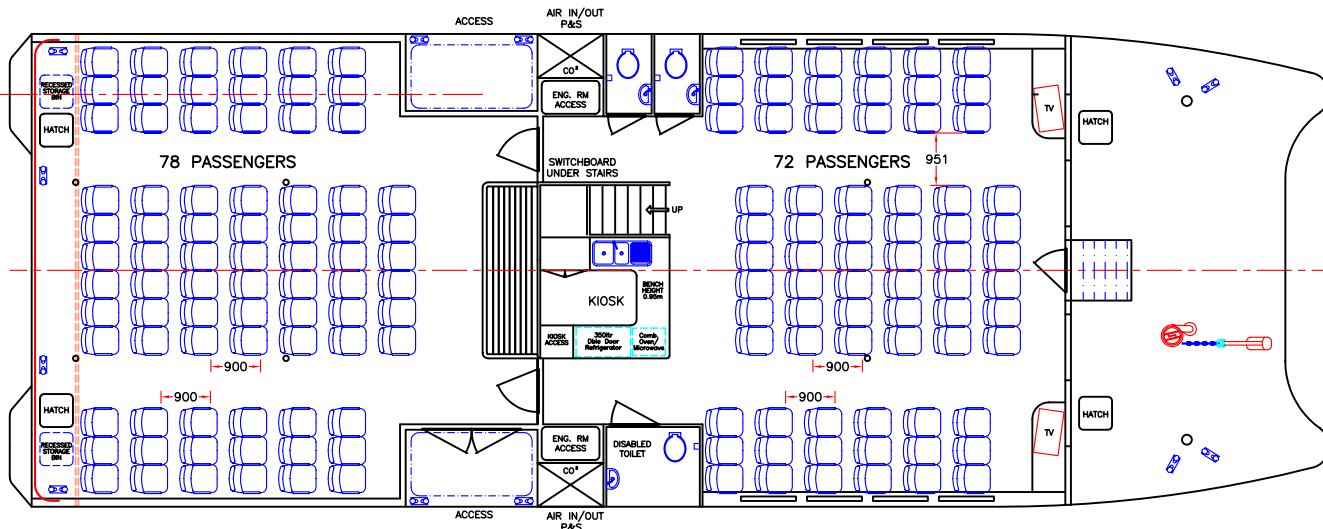
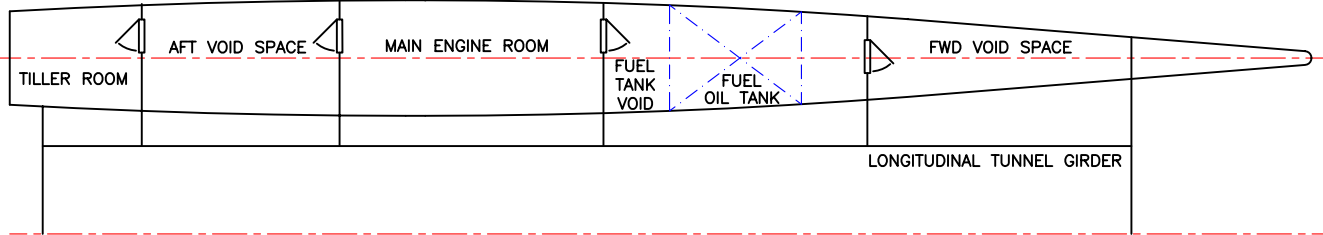
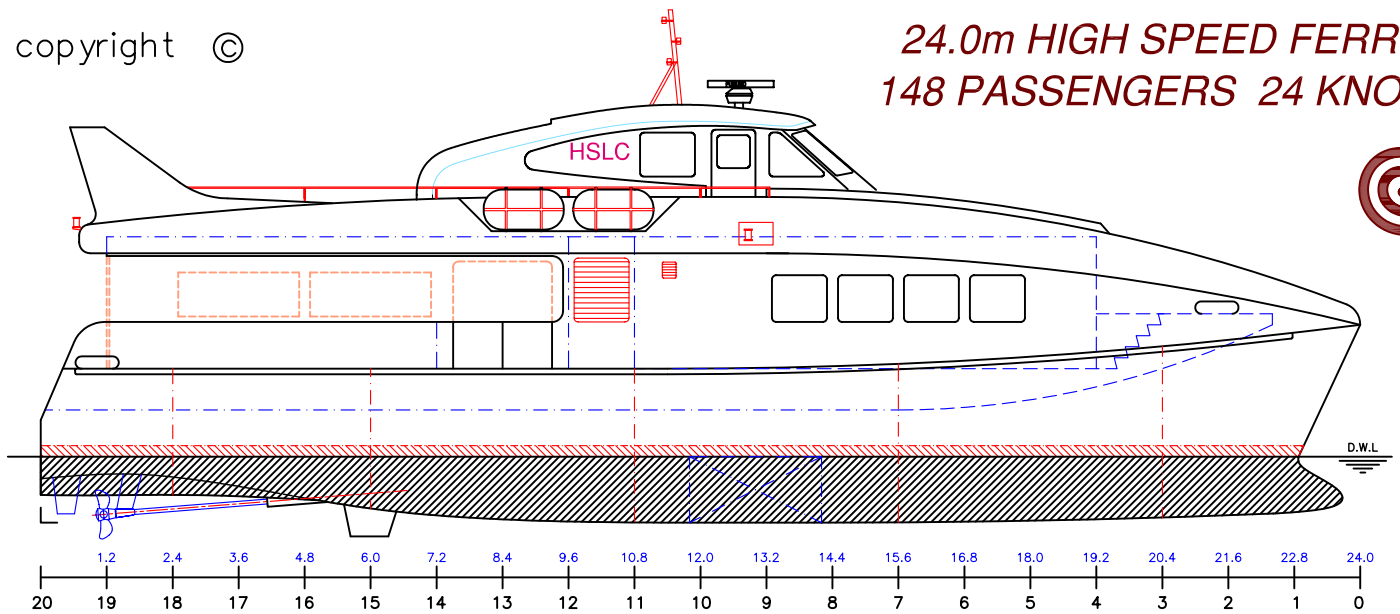


# 24.0m HIGH SPEED FERRY 148 PASSENGERS 24 KNOTS



LOA: 24.0m	FUEL: 5000lts	MAIN ENGINES: 2 x CAT 3406C
LOP: 23.7m	WATER: 2000lts	399kW @ 2100rpm
BEAM: 8.6m	PASSENGERS: 148+40UD	GEARBOX: 2 x TD MG5114
DRAFT: 1.1m	SPEED: 24knots	PROPULSION: FIXED PITCH PROP

VESSEL:	24m CATAMARAN FERRY
TITLE:	GENERAL ARRANGEMENT
DWG No:	A24m-100
SCALE:	
DATE:	12/12/03
DRAWN:	MDW