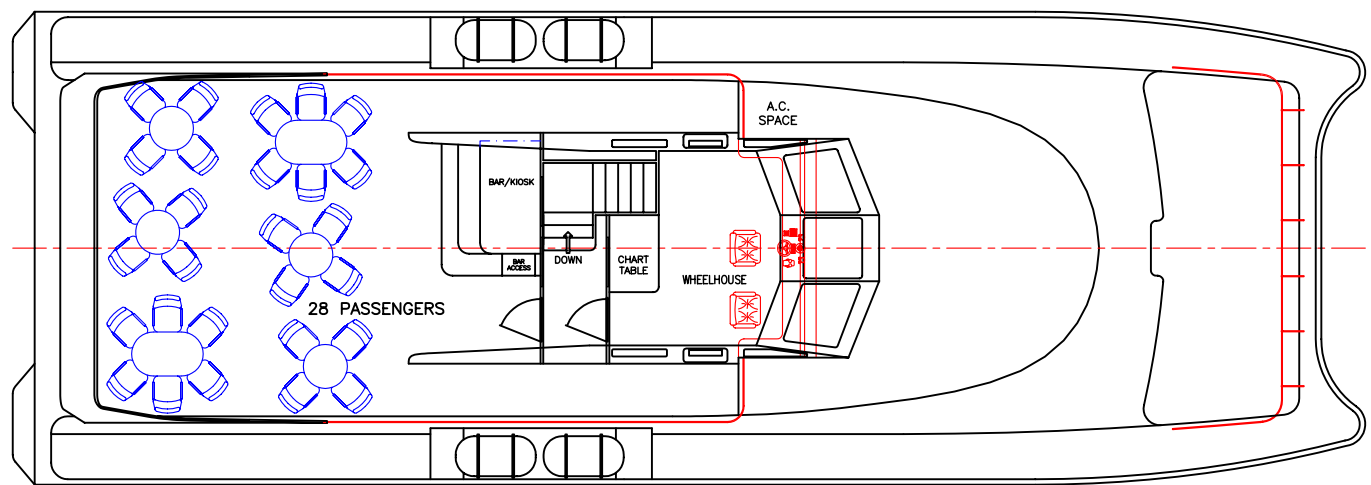
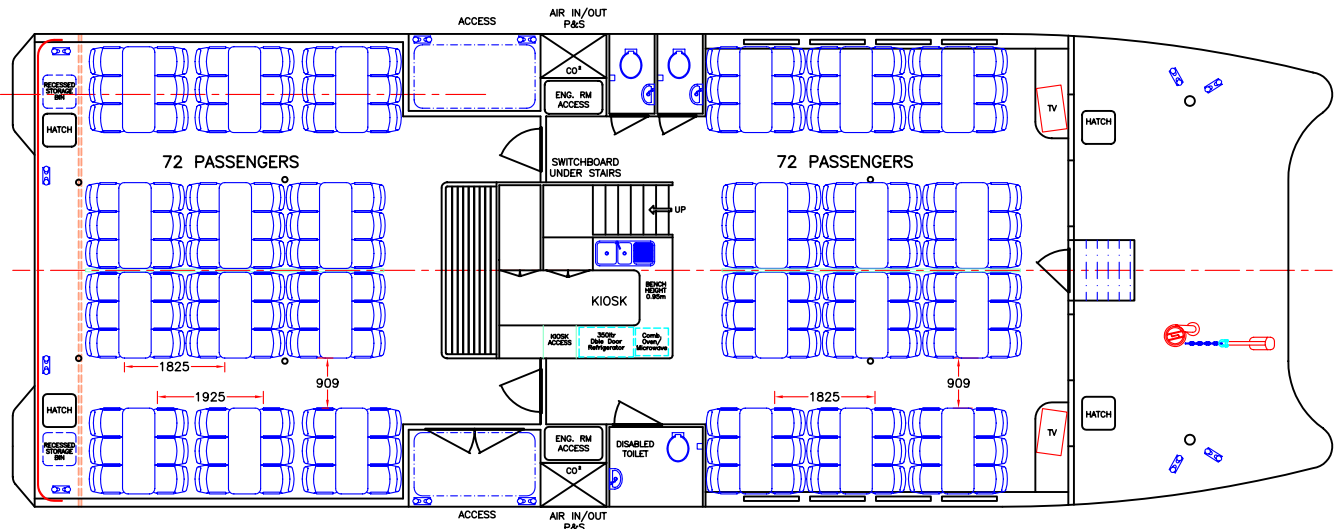
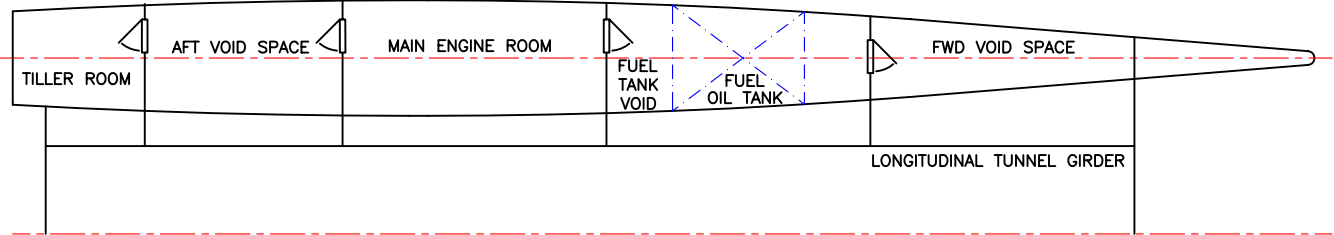
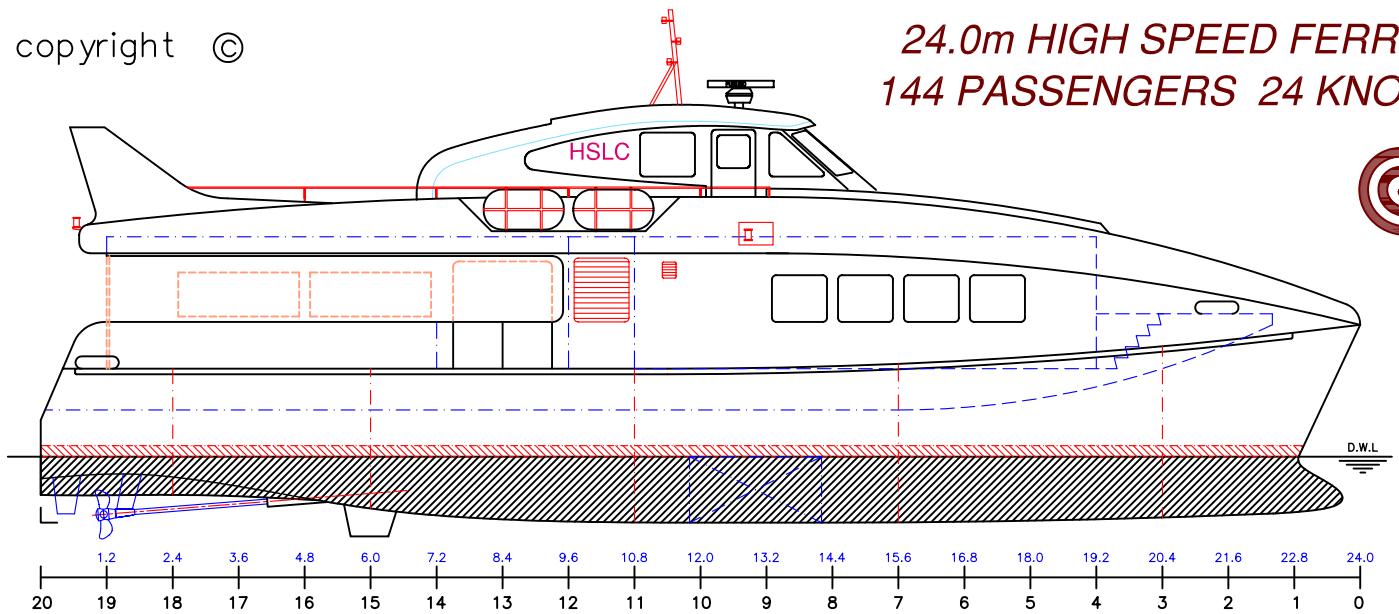


**24.0m HIGH SPEED FERRY
144 PASSENGERS 24 KNOTS**



| | | |
|-------------|----------------------|------------------------------|
| LOA: 24.0m | FUEL: 5000lts | MAIN ENGINES: 2 x CAT 3406C |
| LOP: 23.7m | WATER: 2000lts | 399kW @ 2100rpm |
| BEAM: 8.6m | PASSENGERS: 144+28UD | GEARBOX: 2 x TD MG5114 |
| DRAFT: 1.1m | SPEED: 24knots | PROPULSION: FIXED PITCH PROP |