

HSLC

24m Coastal Ferry

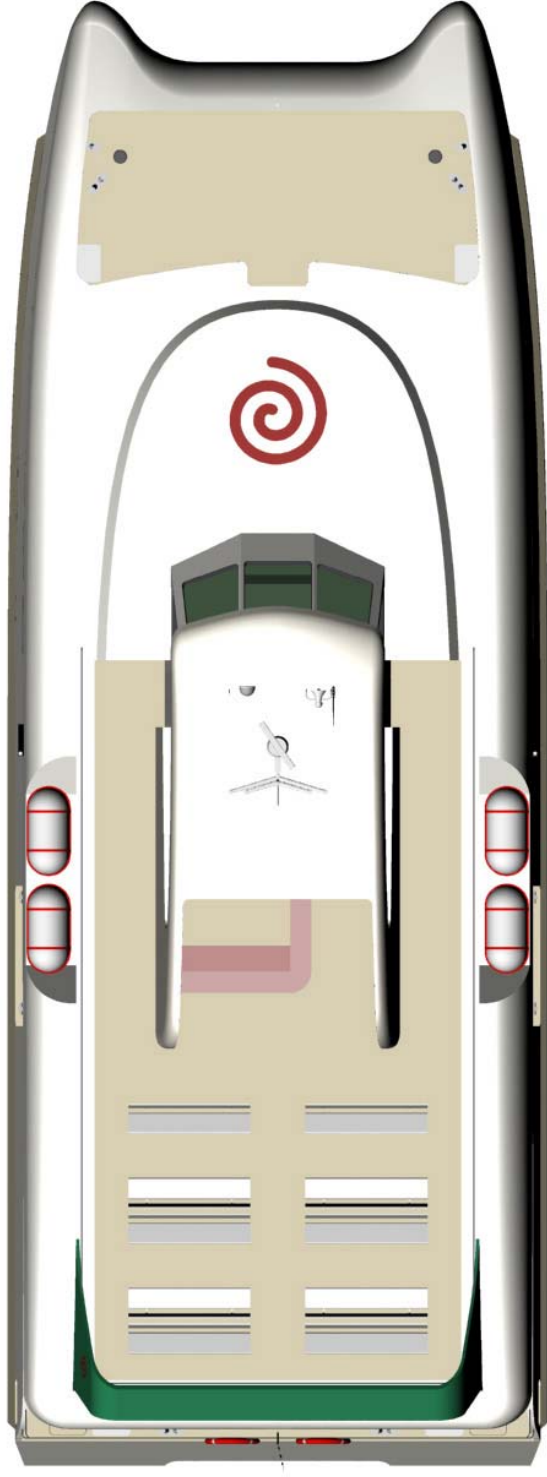
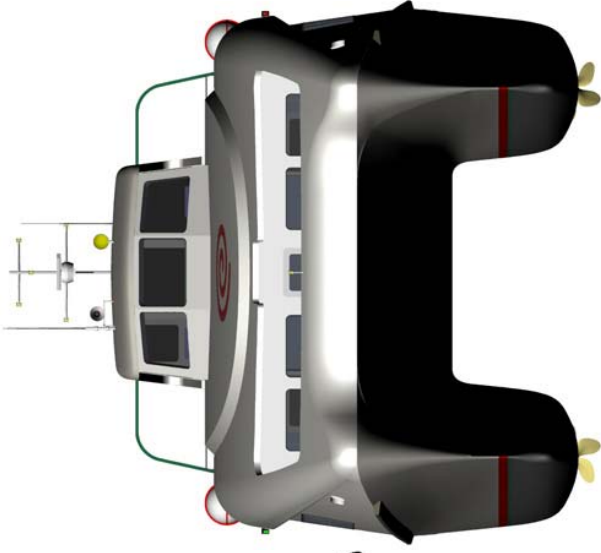


Mark Williamson Design

48 Sweetgum St, Ashmore Qld 4214, Australia

Ph: (617) 5597 3521 Fax: (617) 5597 3529 www.mwdesign.net.au

24m COASTAL FERRY



PRINCIPAL DATA

LOA :	24.0m
LOP :	23.7m
Beam :	8.60m
Draft :	1.10m
Construction:	Marine Grade Aluminium
Main Engines:	2 x CAT 3406C
Gearbox:	399kW @ 2100rpm
Propulsion:	2 x TD MG5114 (2.45:1)
Fuel :	2 x 35" FPP
Freshwater:	2 x 2500lts
Speed :	500lts
Passengers:	24 knots
Crew :	144 + 28 upper deck
	4



Mark Williamson Design
48 Sweetgum St, Ashmore Qld 4214, Australia
Ph: (617) 5597 3521 Fax: (617) 5597 3529 www.mwdesign.net.au

24m Coastal Ferry

Vessel Description

VESSEL TYPE: High Speed Aluminium Catamaran for coastal service, round bilge “semi-swath” hullform incorporating bulbous bows.

SURVEY AND CLASSIFICATION:

The vessel shall be classed Det Norske Veritas (DNV) with the notation ✕1A1 HSLC R3 Passenger, EO, shall comply with the requirements of Queensland Survey USL 2B

STRUCTURE:

Materials (to be inspected as required by Survey Authority and Owners Representative):

Sheet and Plate - Grade 5083-H321, H116, 5086-H32

Extrusions - Grade 6061-T6, 6082-T5, Filler Wire - Grade 5356, Castings - Grade CC601-T1

All welders to be approved by the Survey Authority.

OUTFIT AND FINISHING: The vessel shall be laid out as per the general arrangement drawings and all fittings and equipment required for the operation of the vessel shall be supplied.

LAYOUT Main Deck: Internal Seating for 72, 12 x 6 seat + table, Kiosk 8.2m², 3 Toilets (one disabled with shower), External Seating for 72, 12 x 6 seat + table, Luggage racks (floor area 3.2m²)

Seating ; External: Rae Line Skipper Elite coastal Internal: Rae Line Skipper Challenger

Upper Deck: Wheelhouse, External; outdoor seating for 28, bar.

FITOUT Floors: Entry, Toilets, Kiosk, WHS : “Aquadeck”
Forward Passenger Space : 100% Wool Carpet
External Decks : Non-skid paint

Linings: Sides: Aluminium honeycomb panels (Ayrlyte)
Bulkheads: Aluminium honeycomb panels (Ayrlyte)
Deckhead: “Luxalon” perforated aluminium

AIR CONDITIONING SYSTEM: System is based on an water cooled compressor unit linked up to a multiple number of fan coil units. Design of the system shall be based upon an ambient operating temperature of 35°C (90% RH) and sea water of 32°C. Crew and Passenger spaces to be cooled to 21°C (50% RH).

NAVIGATION and COMMUNICATION EQUIPMENT:

Furuno Model 1510 15” Radar with 6ft antenna 15mtr cable ARP17 Plotter GCY8 Gyro converter

JMC 1400 Dual frequency sounder 50/200 1kw

JMC NP-30NT with GPS ANTENNA

ICOM-IC-M700 complete with tuner and Banten HF antenna

Icom IC-M502 VHF Radio with Banten antenna

Sailor C2906 Inmarsat C VMS unit

KVH Trac phone Inmarsat M

Navicontrol Autopilot 3003 Gold with second station

Cetrek “Poseidon” compass

Den Haan DHR CS-220 Searchlight

Closed circuit TV monitoring of engine room and main deck. All navigation equipment interfaced to Bridge displays



Mark Williamson Design

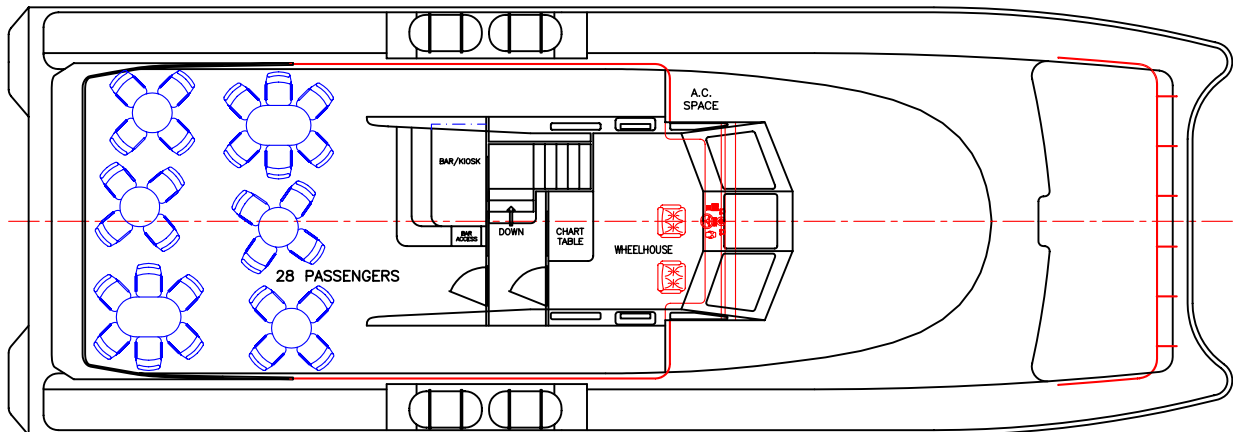
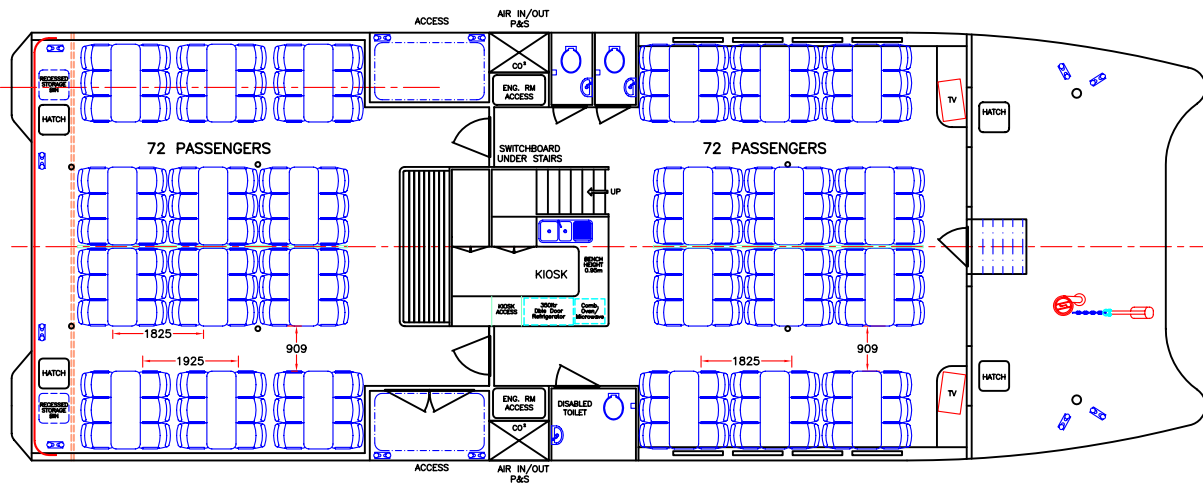
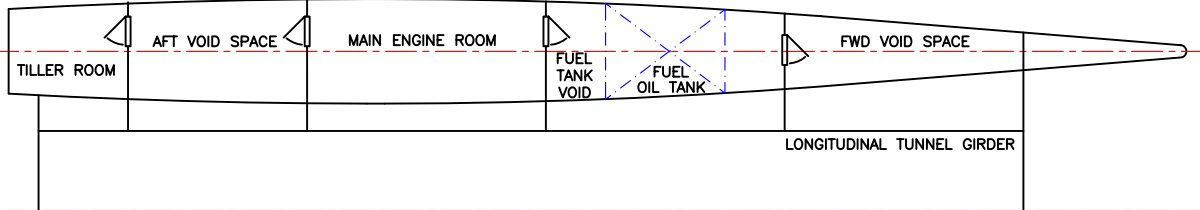
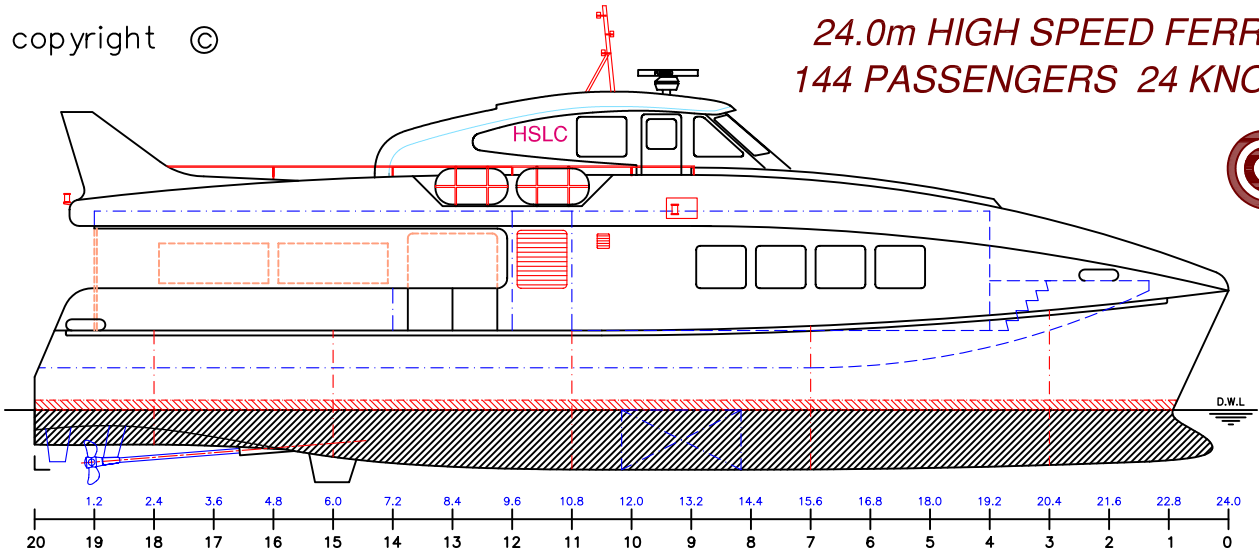
48 Sweetgum St, Ashmore Qld 4214, Australia

Ph: (617) 5597 3521 Fax: (617) 5597 3529 www.mwdesign.net.au



copyright ©

**24.0m HIGH SPEED FERRY
144 PASSENGERS 24 KNOTS**



LOA: 24.0m	FUEL: 5000lts	MAIN ENGINES: 2 x CAT 3406C
LOP: 23.7m	WATER: 2000lts	399kW @ 2100rpm
BEAM: 8.6m	PASSENGERS: 144+28UD	GEARBOX: 2 x TD MG5114
DRAFT: 1.1m	SPEED: 24knots	PROPULSION: FIXED PITCH PROP

copyright ©

MARK WILLIAMSON DESIGN
Consulting Naval Architects & Mechanical Engineers

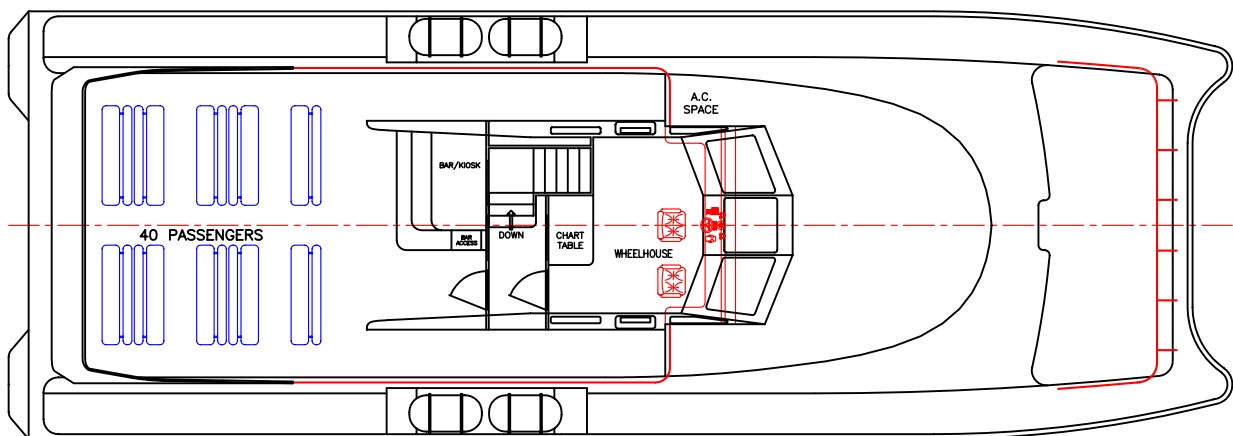
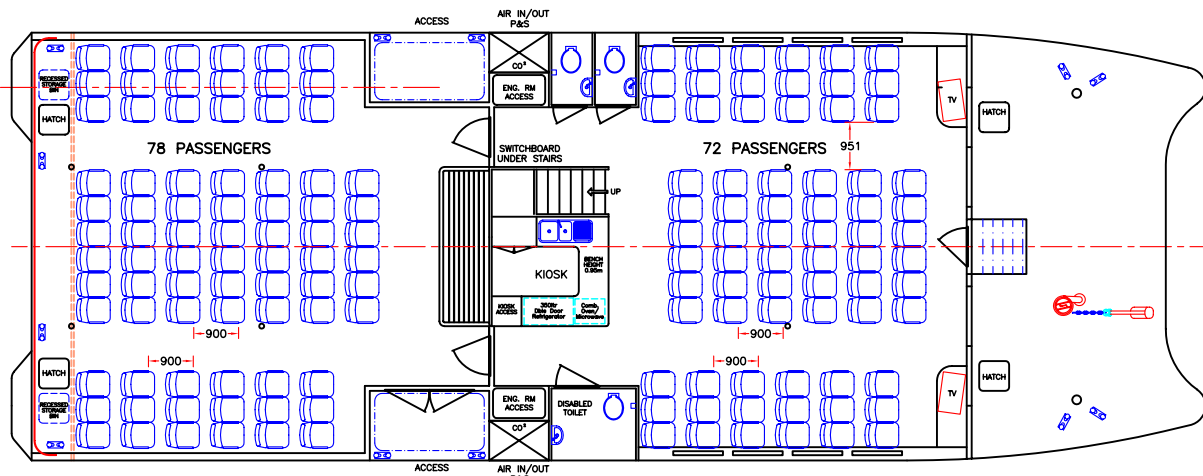
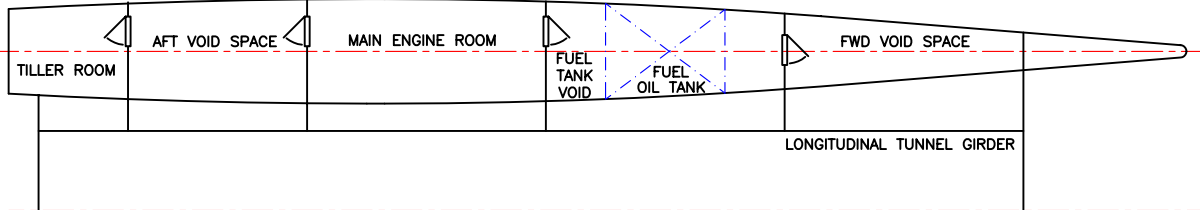
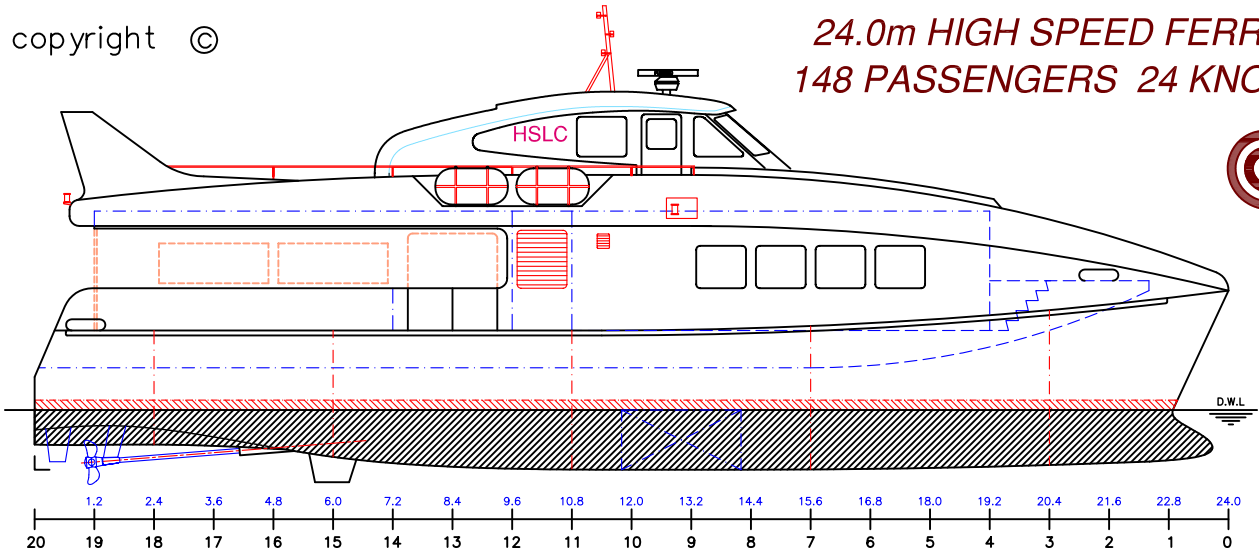
48 Sweetgum St, Ashmore, Queensland 4214, Australia
Ph: 617 5597 3521 Fax: 617 5597 3529 www.mwdesign.net.au

VESSEL: 24m CATAMARAN FERRY	
TITLE: GENERAL ARRANGEMENT	
DWG No: AT24m-100	SCALE:
DATE: 12/12/03	DRAWN: MDW

THIS DRAWING AND/OR SPECIFICATION IS THE PROPERTY OF MARK WILLIAMSON DESIGN PTY LTD. IT IS NOT TO BE USED BY OR DISCLOSED TO ANY THIRD PERSON WITHOUT THE EXPRESSED PERMISSION OF MARK WILLIAMSON DESIGN PTY LTD.

copyright ©

**24.0m HIGH SPEED FERRY
148 PASSENGERS 24 KNOTS**



LOA: 24.0m	FUEL: 5000lts	MAIN ENGINES: 2 x CAT 3406C
LOP: 23.7m	WATER: 2000lts	399kW @ 2100rpm
BEAM: 8.6m	PASSENGERS: 148+40UD	GEARBOX: 2 x TD MG5114
DRAFT: 1.1m	SPEED: 24knots	PROPULSION: FIXED PITCH PROP

copyright ©

MARK WILLIAMSON DESIGN
Consulting Naval Architects & Mechanical Engineers

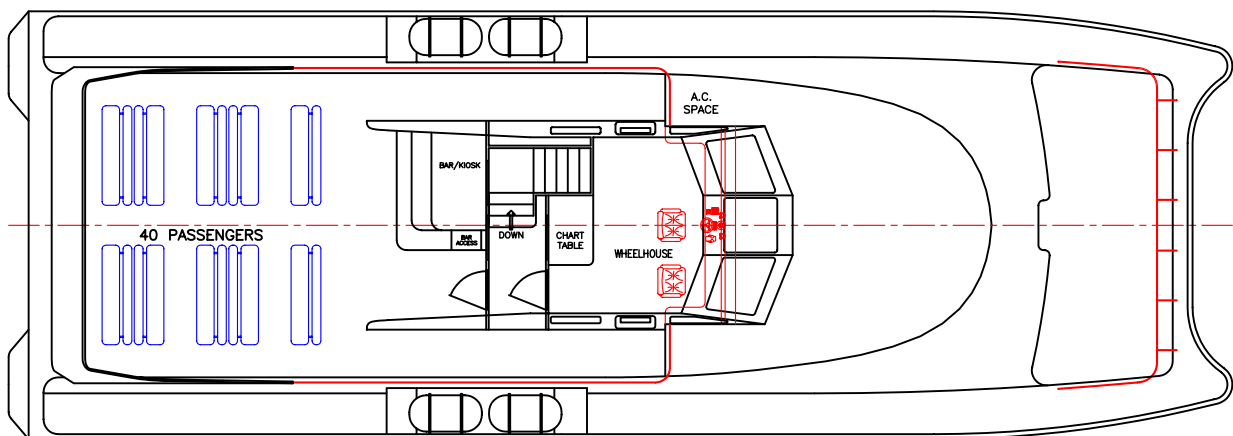
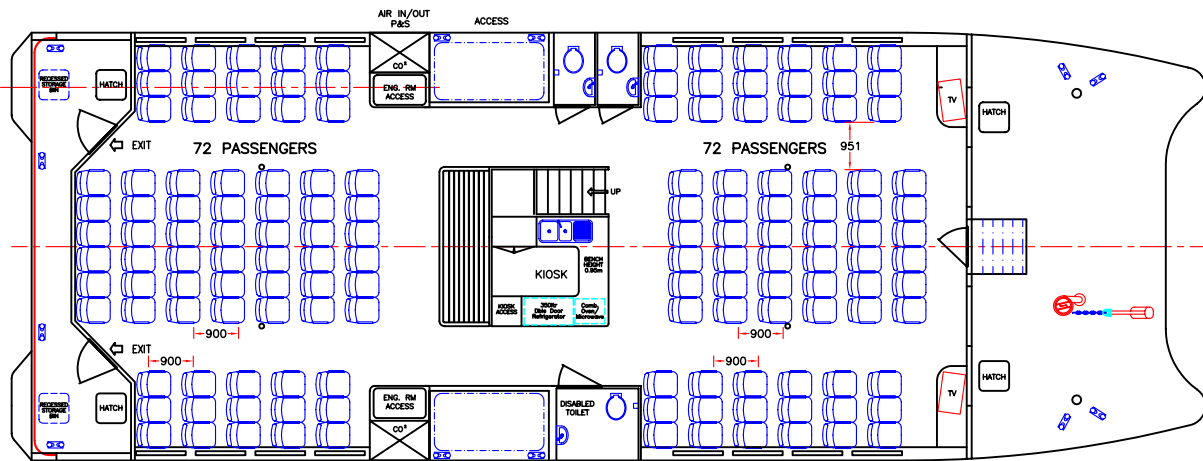
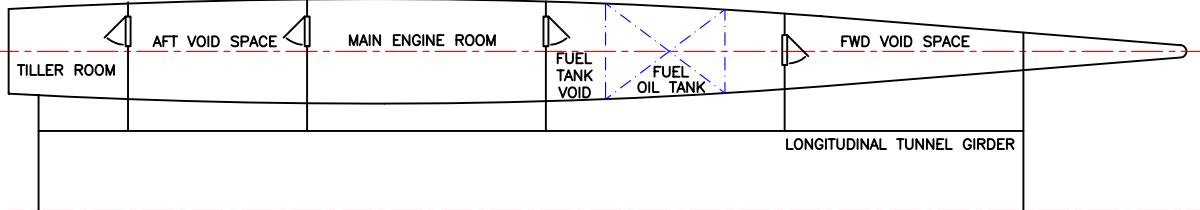
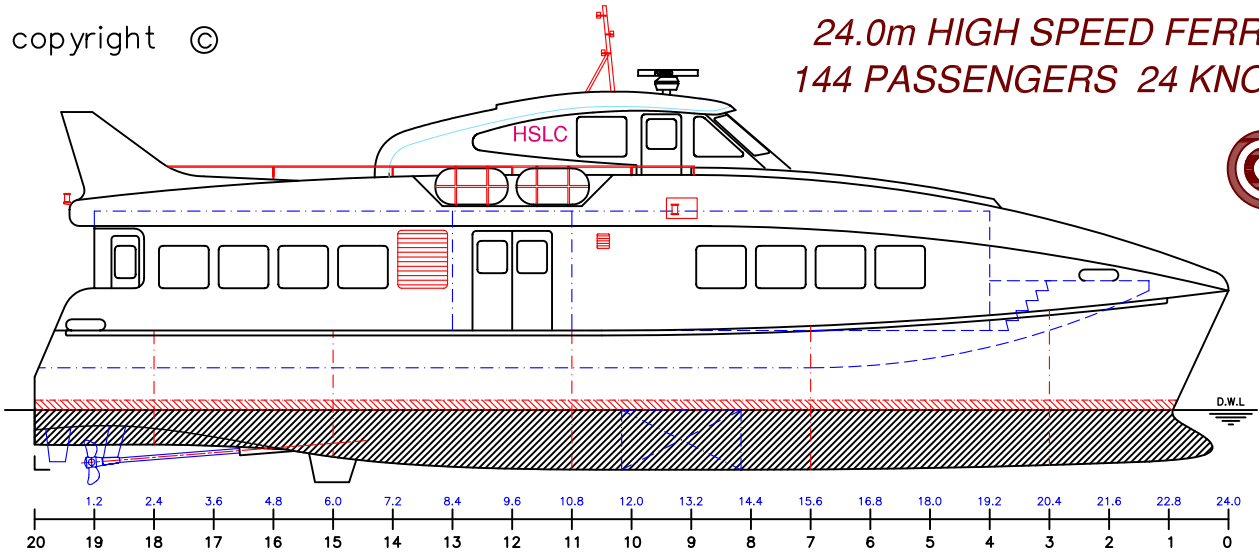
48 Sweetgum St, Ashmore, Queensland 4214, Australia
Ph: 617 5597 3521 Fax: 617 5597 3529 www.mwdesign.net.au

VESSEL: 24m CATAMARAN FERRY	
TITLE: GENERAL ARRANGEMENT	
DWG No: A24m-100	SCALE:
DATE: 12/12/03	DRAWN: MDW

THIS DRAWING AND/OR SPECIFICATION IS THE PROPERTY OF MARK WILLIAMSON DESIGN PTY LTD. IT IS NOT TO BE USED BY OR DISCLOSED TO ANY THIRD PERSON WITHOUT THE EXPRESSED PERMISSION OF MARK WILLIAMSON DESIGN PTY LTD.

copyright ©

**24.0m HIGH SPEED FERRY
144 PASSENGERS 24 KNOTS**



LOA: 24.0m	FUEL: 5000lts	MAIN ENGINES: 2 x CAT 3406C
LOP: 23.7m	WATER: 2000lts	399kW @ 2100rpm
BEAM: 8.6m	PASSENGERS: 144+40UD	GEARBOX: 2 x TD MG5114
DRAFT: 1.1m	SPEED: 24knots	PROPULSION: FIXED PITCH PROP

copyright ©

MARK WILLIAMSON DESIGN
Consulting Naval Architects & Mechanical Engineers

48 Sweetgum St, Ashmore, Queensland 4214, Australia
Ph: 617 5597 3521 Fax: 617 5597 3529 www.mwdesign.net.au

VESSEL: 24m CATAMARAN FERRY	
TITLE: GENERAL ARRANGEMENT	
DWG No: C24m-100	SCALE:
DATE: 13/12/03	DRAWN: MDW

THIS DRAWING AND/OR SPECIFICATION IS THE PROPERTY OF MARK WILLIAMSON DESIGN PTY LTD. IT IS NOT TO BE USED BY OR DISCLOSED TO ANY THIRD PERSON WITHOUT THE EXPRESSED PERMISSION OF MARK WILLIAMSON DESIGN PTY LTD.