

HSLC

23m Patrol Craft



Mark Williamson Design

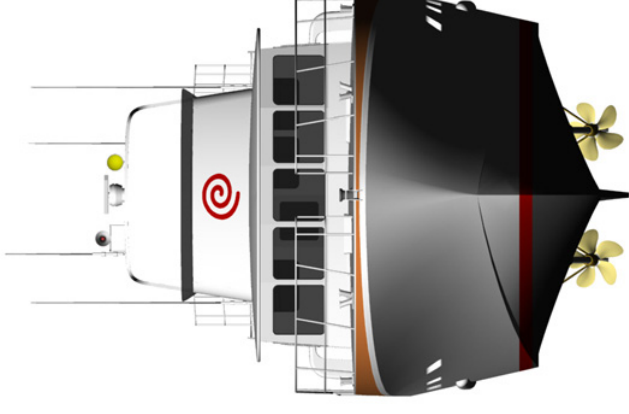
48 Sweetgum St, Ashmore Qld 4214, Australia

Ph: (617) 5597 3521 Fax: (617) 5597 3529 www.mwdesign.net.au



HSLC

23m Patrol Craft



LOA : 23.0m
LWL : 20.80m
Beam : 6.20m
Draft : 1.60m
Fuel : 14500lts
Power : 2 x 735kW
Speed : 28 knots

Classification :
DNV ✕1A1 HSLC R1 PATROL

Construction :
Marine Grade Aluminium



Mark Williamson Design

48 Sweetgum St, Ashmore Qld 4214, Australia

Ph: (617) 5597 3521 Fax: (617) 5597 3529 www.mwdesign.net.au

23m Patrol Craft

Vessel Description

VESSEL TYPE:

Aluminium semi displacement hard chined monohull. Hull and deckhouse plating fully developable.

SURVEY AND CLASSIFICATION:

DNV 1A1 HSLC R Patrol , shall comply with the requirements of Queensland Survey USL 2B.

STRUCTURE:

Materials (to be inspected as required by Survey Authority and Owners Representative):

Sheet and Plate - Grade 5083-H321, H116, 5086-H32

Extrusions - Grade 6061-T6, 6082-T5

Filler Wire - Grade 5356

Castings - Grade CC601-T1

All welders to be approved by the Survey Authority.

OUTFIT AND FINISHING:

The vessel shall be laid out as per the general arrangement drawings and all fittings and equipment required for the operation of the vessel shall be supplied.

LAYOUT:

Main Deck: Mess area, galley and ships office aft of navigation area in wheelhouse

Lower Deck: One Officers cabin, two crew cabins fwd, lounge area with TV and video. A store room with freezer, washing machine and workbench is located between the accommodation and the engine room compartment.

Aft Main Deck: 4.7 metre RIB stowed in aft deck recess, deployed and retrieved via hinged ramp on transom. Toilet and Shower

FITOUT:

Floors: Rubber

Linings: Sides Aluminium honeycomb panels (Ayr-lite)

Bulkheads Aluminium honeycomb panels (Ayr-lite)

AIR CONDITIONING SYSTEM:

Reverse cycle system is based on an water cooled compressor unit linked up to a multiple number of fan coil units. Design of the system shall be based upon an ambient operating temperature of 35°C (98% RH) and sea water of 30°C. Crew spaces to be cooled/heated to 21°C (50% RH).

NAVIGATION and COMMUNICATION EQUIPMENT:

Furuno Model 1510 15" Radar with 6ft antenna 15mtr cable ARP17 Plotter GCY8 Gyro converter

JMC 1400 Dual frequency sounder 50/200 1kw

JMC NP-30NT with GPS ANTENNA

ICOM-IC-M700 complete with tuner and Banten HF antenna

Icom IC-M502 VHF Radio with Banten antenna

Sailor C2906 Inmarsat C VMS unit

KVH Trac phone Inmarsat M

Navicontrol Autopilot 3003 Gold with second station

Cetrek "Poseidon" compass Den Haan DHR CS-220 Searchlight

Closed circuit TV monitoring of engine room and main deck. All navigation equipment interfaced to Flying Bridge displays.

Mark Williamson Design

48 Sweetgum St, Ashmore Qld 4214, Australia

Ph: (617) 5597 3521 Fax: (617) 5597 3529 www.mwdesign.net.au

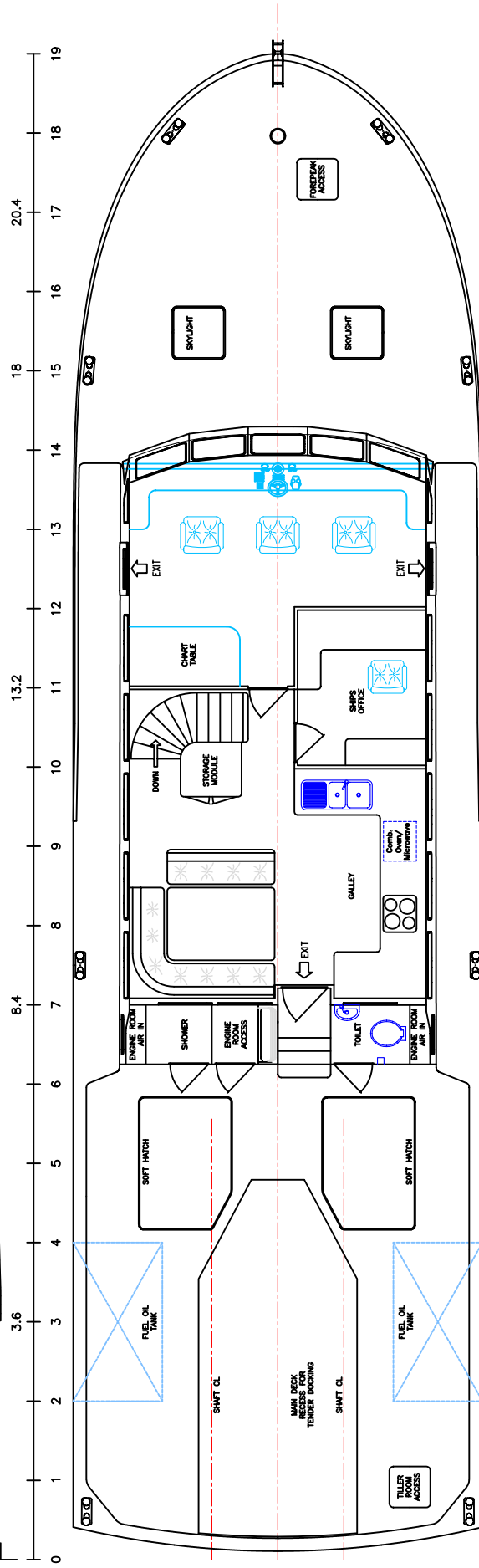
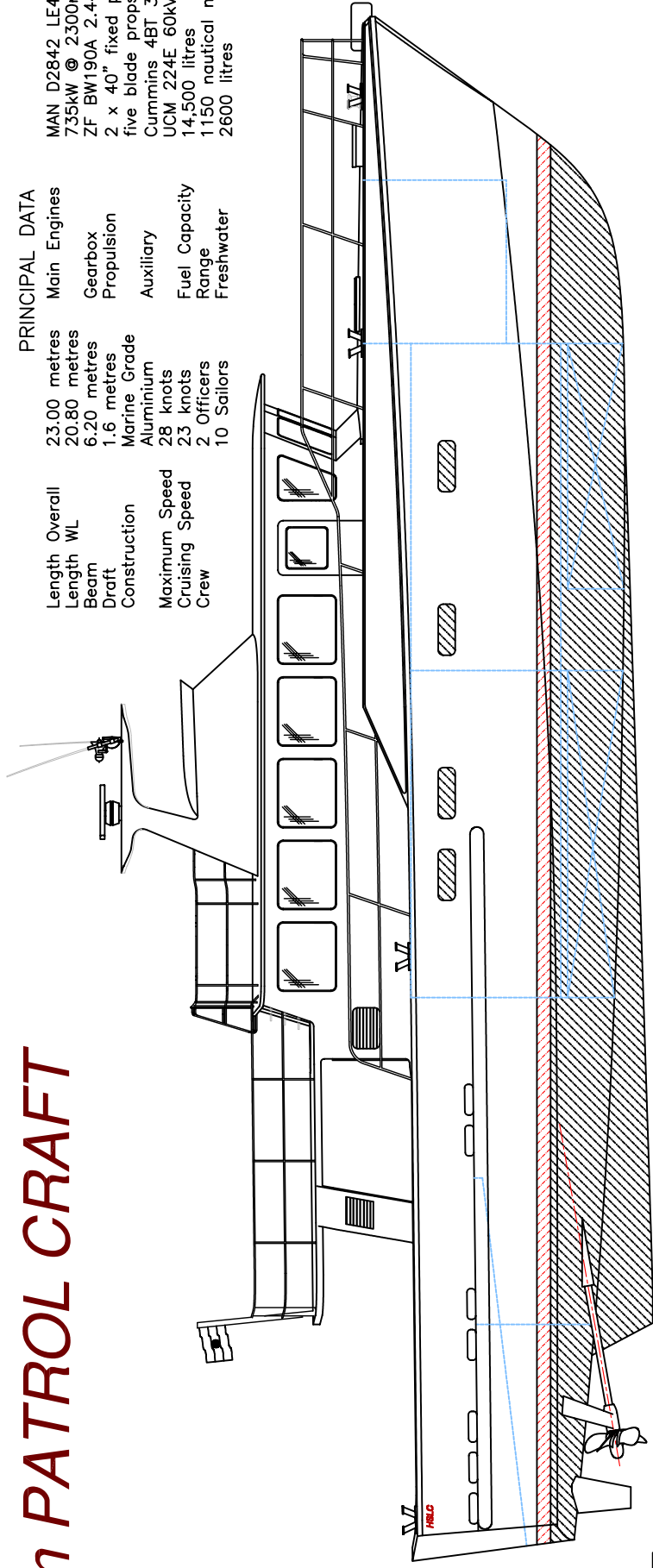


23m PATROL CRAFT



PRINCIPAL DATA

Length Overall	23.00 metres	Main Engines	MAN D2842 LE401
Length WL	20.80 metres	Gearbox	735kW @ 2300rpm
Beam	6.20 metres	Propulsion	ZF BW190A 2.448:1 ratio
Draft	1.6 metres	Auxiliary	five blade props
Construction	Marine Grade Aluminium	Fuel Capacity	Cummins 4BT 3.9G2(M)/
Maximum Speed	28 knots	Range	14,500 litres
Cruising Speed	23 knots	Freshwater	2600 litres
Crew	2 Officers 10 Sailors		



copyright ©

THIS DRAWING AND/OR SPECIFICATION IS THE PROPERTY OF MARK WILLIAMSON DESIGN PTY LTD. IT IS NOT TO BE USED BY OR DISCLOSED TO ANY THIRD PERSON WITHOUT THE EXPRESSED PERMISSION OF MARK WILLIAMSON DESIGN PTY LTD.

MARK WILLIAMSON DESIGN
 Consulting Naval Architects & Mechanical Engineers

48 Sweetgum St, Ashmore, Queensland 4214, Australia
 Ph: 617 5597 3521 Fax: 617 5597 3529 www.mwdesign.net.au

VESSEL: 23m PATROL CRAFT

TITLE: GENERAL ARRANGEMENT

DWG No: P23-100

SCALE:

DATE: 2/10/2002

DRAWN: MDW