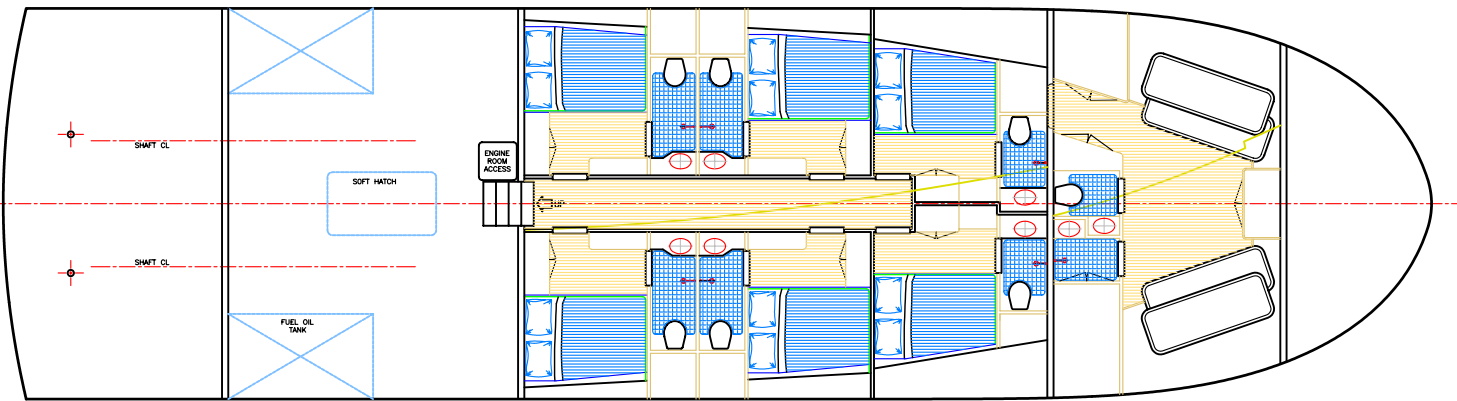
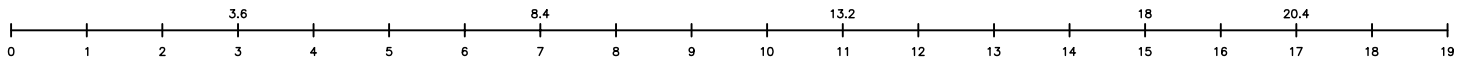
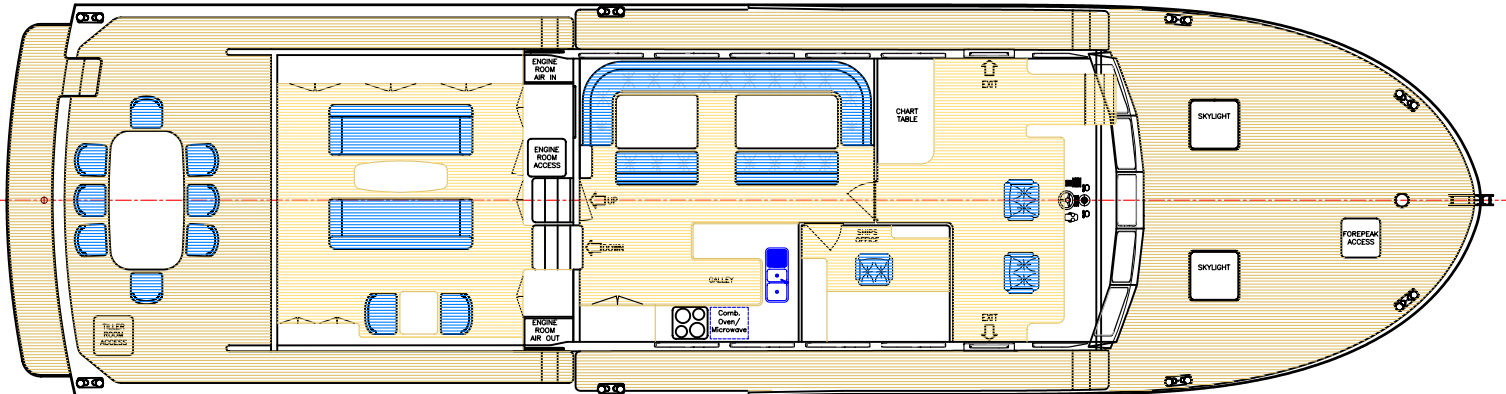
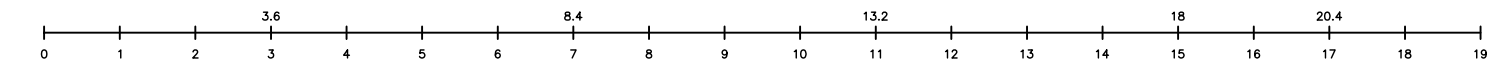
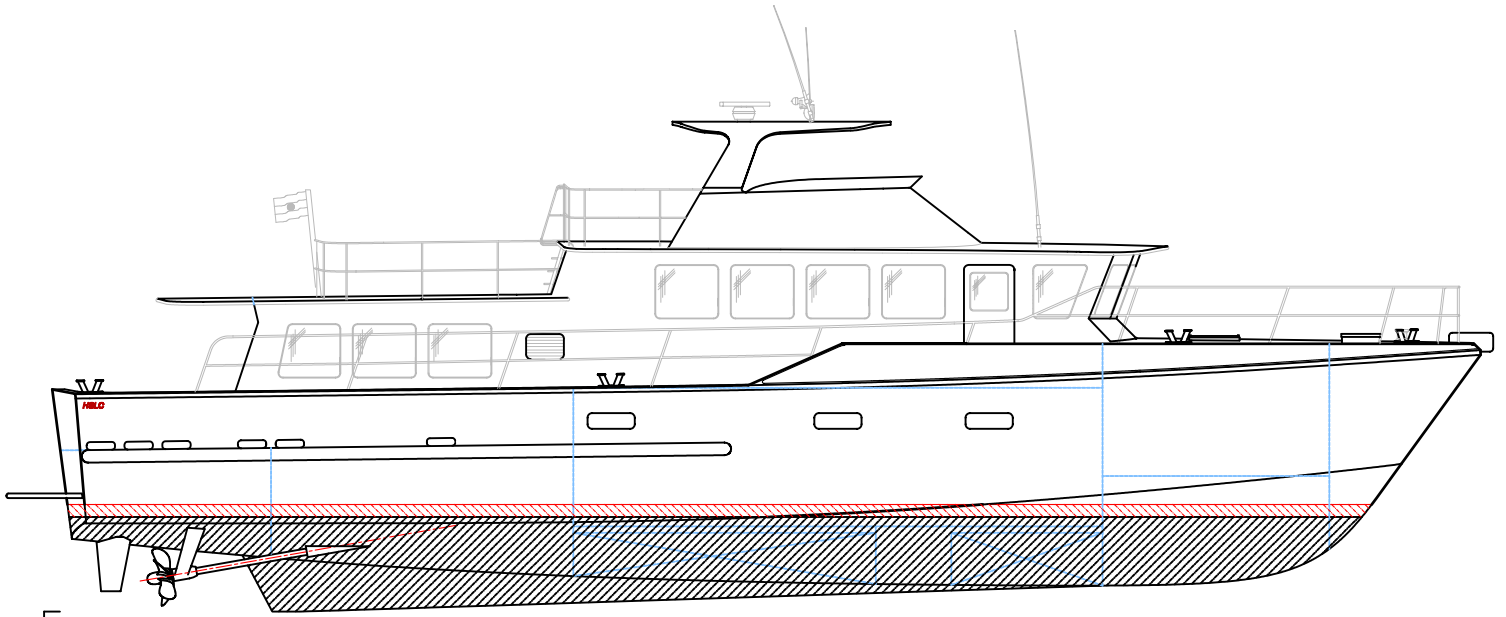


23m EXPEDITION YACHT



PRINCIPAL DATA

Length Overall	23.00 metres	Maximum Speed	18 knots	Propulsion	2 x 26" fixed pitch props
Length WL	20.80 metres	Cruising Speed	13 knots	Auxiliary	Cummins 4BT 3.9G2M-UCM 224E 60kVa
Beam	6.20 metres	Berths	12 Guests 5 Crew	Fuel Capacity	14,500 litres
Draft	1.6 metres	Main Engines	2 x YANMAR 6LY2ASTP 440HP @ 3300rpm	Range	2900 nautical miles
Construction	Marine Grade Aluminium	Gearbox	2 x TD MG506-1 Ratio 2.96:1	Freshwater	2600 litres

copyright ©

THIS DRAWING AND/OR SPECIFICATION IS THE PROPERTY OF MARK WILLIAMSON DESIGN PTY LTD. IT IS NOT TO BE USED BY OR DISCLOSED TO ANY THIRD PERSON WITHOUT THE EXPRESSED PERMISSION OF MARK WILLIAMSON DESIGN PTY LTD.

MARK WILLIAMSON DESIGN

Consulting Naval Architects & Mechanical Engineers

48 Sweetgum St, Ashmore, Queensland 4214, Australia
Ph: 617 5597 3521 Fax: 617 5597 3529 www.mwdesign.net.au

VESSEL: 23m EXPEDITION YACHT

TITLE: GENERAL ARRANGEMENT

DWG No: E23-100

SCALE:

DATE: 10/8/2003

DRAWN: MDW