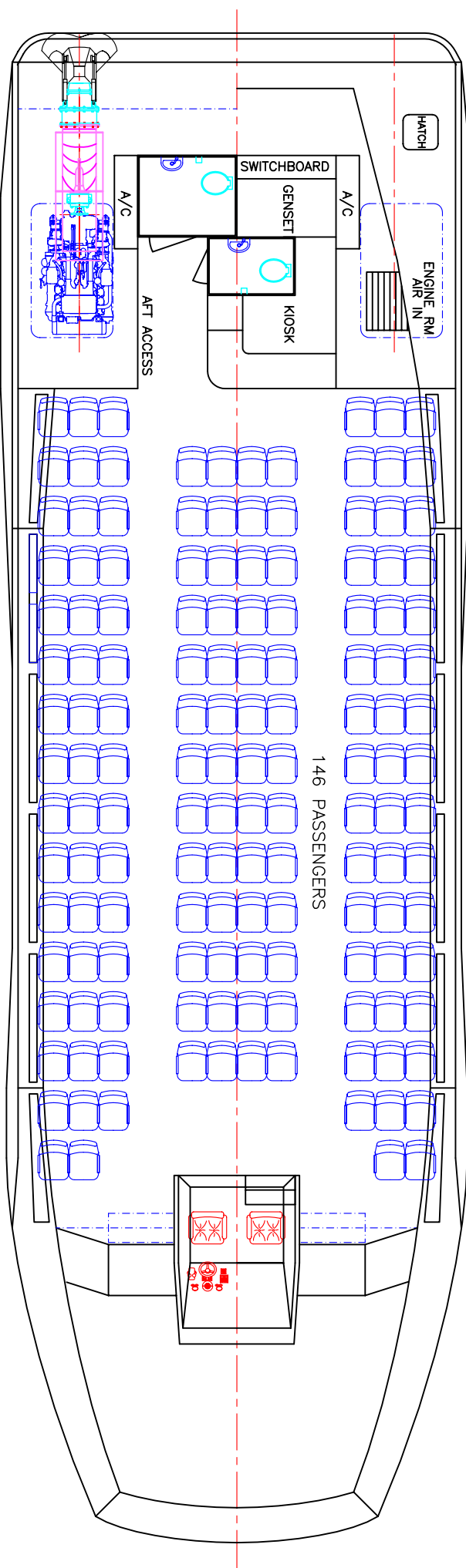
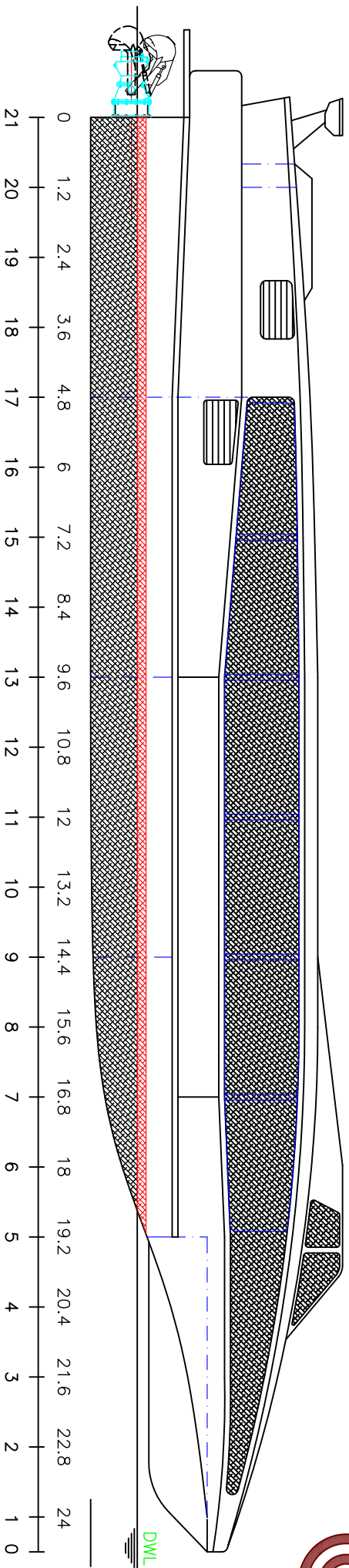


26m LOW WASH RIVER FERRY 146 PASSENGERS 40 KNOTS



LOA:	25.4m	FUEL:	4000lts	MAIN ENGINES:	2 x MTU 16V2000 M70
LWL:	18.8m	WATER:	500lts		1050kW @ 2100rpm
BEAM:	8.0m	PASSENGERS:	146	GEARBOX:	2 x ZF BW250
DRAFT:	0.8m	SPEED:	40knots	PROPULSION:	MJP J450

copyright ©

THIS DRAWING AND/OR SPECIFICATION IS THE PROPERTY OF MARK WILLIAMSON DESIGN PTY LTD. IT IS NOT TO BE USED BY OR DISCLOSED TO ANY THIRD PERSON WITHOUT THE EXPRESSED PERMISSION OF MARK WILLIAMSON DESIGN PTY LTD.

MARK WILLIAMSON DESIGN
Consulting Naval Architects & Mechanical Engineers

48 Sweetgum St, Ashmore, Queensland 4214, Australia
 Ph: 617 5597 3521 Fax: 617 5597 3529 www.mwdesign.net.au

VESSEL:	26m RIVER FERRY
TITLE:	GENERAL ARRANGEMENT
DWG No:	26RP-100
DATE:	25/4/98
SCALE:	
DRAWN:	MDW