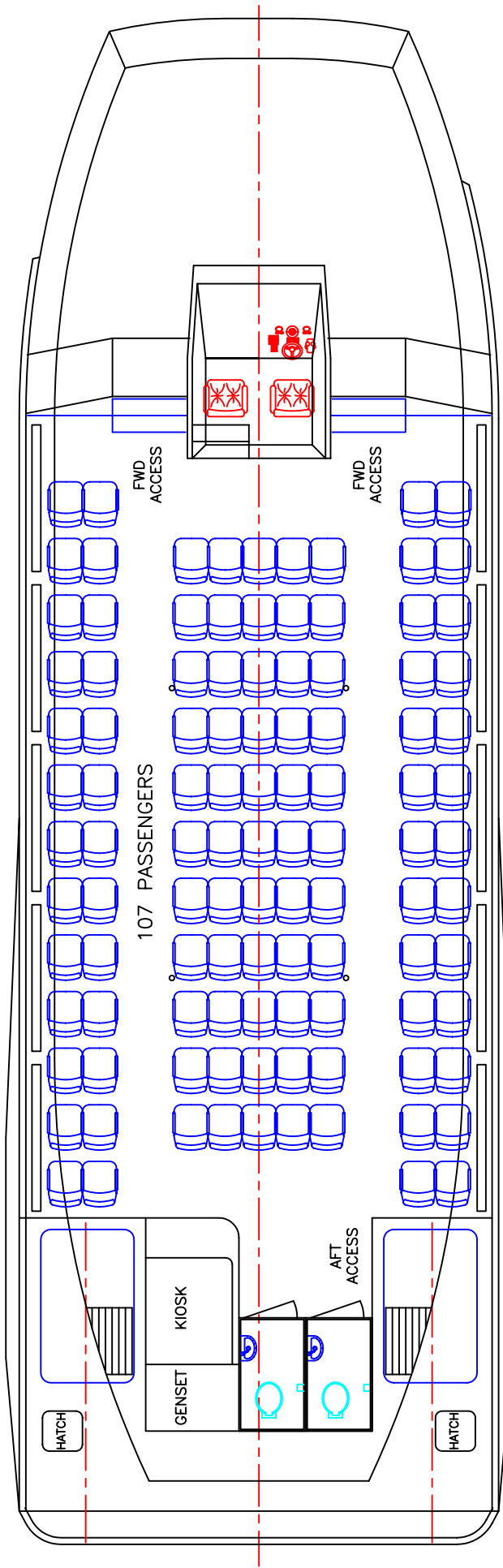
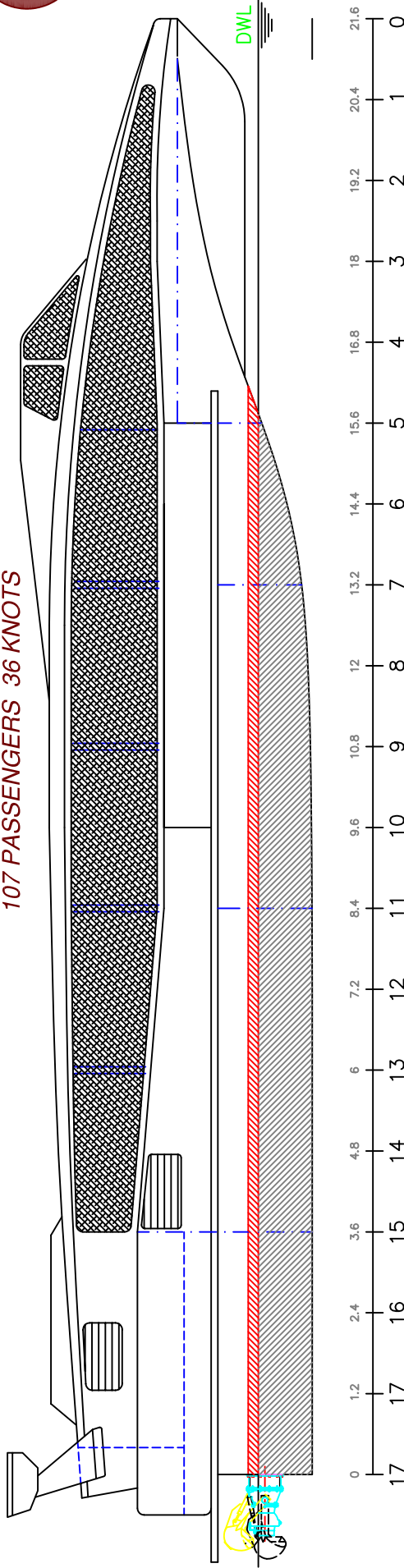


22m HIGH SPEED RIVER FERRY
107 PASSENGERS 36 KNOTS



LOA: 22.2m
LWL: 15.9m
BEAM: 7.2m
DRAFT: 0.8m

FUEL: 3000lts
WATER: 300lts
PASSENGERS: 107
SPEED: 36knots

MAIN ENGINES: 2 x MAN D2842 LE402
735kW @2100rpm
GEARBOX: 2 x ZF BW190
PROPULSION: CASTOLDI 490HC

copyright ©

THIS DRAWING AND/OR SPECIFICATION IS THE PROPERTY OF MARK WILLIAMSON DESIGN PTY LTD. IT IS NOT TO BE USED BY OR DISCLOSED TO ANY THIRD PERSON WITHOUT THE EXPRESSED PERMISSION OF MARK WILLIAMSON DESIGN PTY LTD.

MARK WILLIAMSON DESIGN
Consulting Naval Architects & Mechanical Engineers

48 Sweetgum St, Ashmore, Queensland 4214, Australia
Ph: 617 5597 3521 Fax: 617 5597 3529 www.mwdesign.net.au

VESSEL: 22m RIVER FERRY

TITLE: GENERAL ARRANGEMENT

DWG No: 22PL-100

SCALE:

DATE: 19/12/2003

DRAWN: MDW