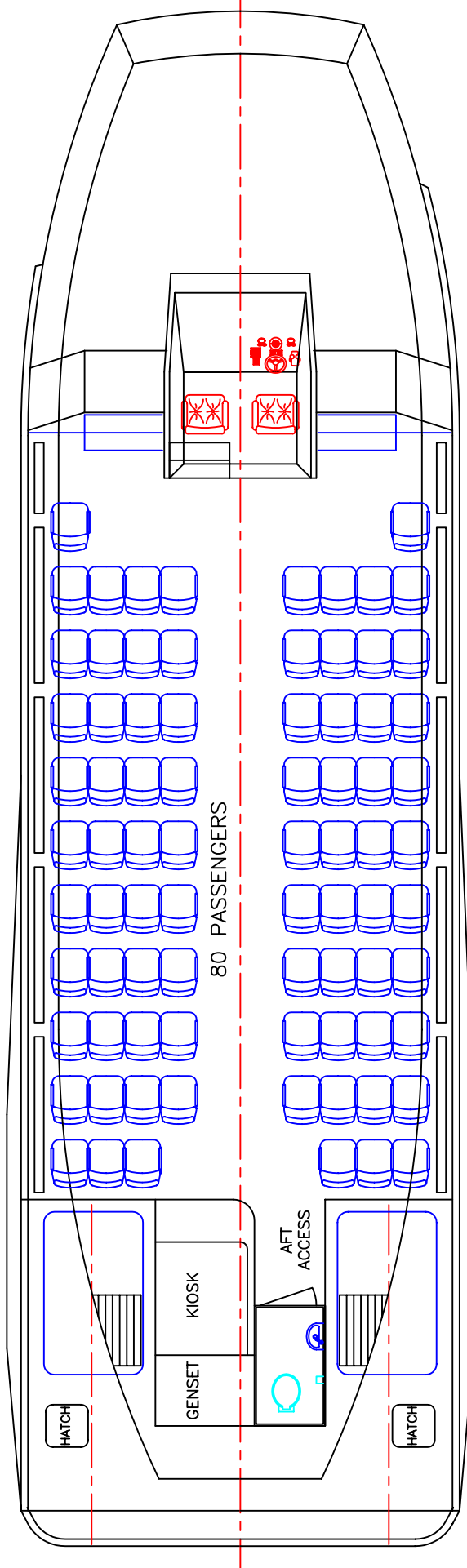
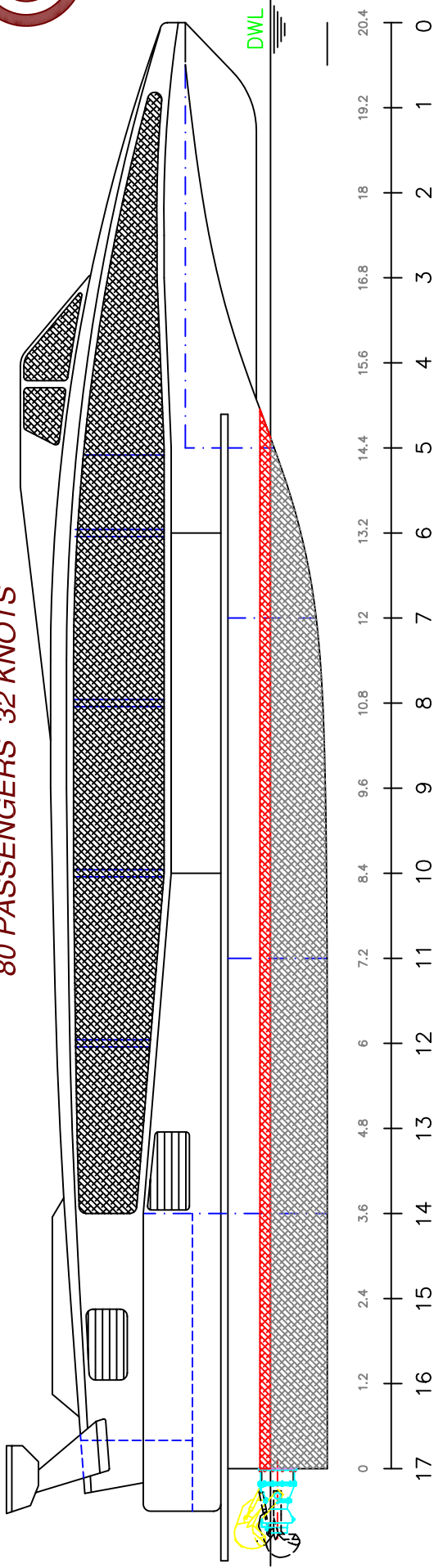


21m HIGH SPEED RIVER FERRY

80 PASSENGERS 32 KNOTS



LOA: 21.0m **FUEL:** 3000lts **MAIN ENGINES:** 2 x VOLVO TAMD163
LWL: 14.7m **WATER:** 300lts 441kW @1800rpm
BEAM: 6.6m **PASSENGERS:** 80 **GEARBOX:** 2 x ZF BW250
DRAFT: 0.8m **SPEED:** 32knots **PROPULSION:** DOEN DJ220

VESSEL: 21m RIVER FERRY
TITLE: GENERAL ARRANGEMENT
DWG No: 21RP-100
DATE: 17/3/2002
SCALE:
DRAWN: MDW

MARK WILLIAMSON DESIGN
 Consulting Naval Architects & Mechanical Engineers
 48 Sweetgum St, Ashmore, Queensland 4214, Australia
 Ph: 617 5597 3521 Fax: 617 5597 3529 www.mwdesign.net.au

copyright ©
 THIS DRAWING AND/OR SPECIFICATION IS THE PROPERTY OF MARK WILLIAMSON DESIGN PTY LTD. IT IS NOT TO BE USED BY OR DISCLOSED TO ANY THIRD PERSON WITHOUT THE EXPRESSED PERMISSION OF MARK WILLIAMSON DESIGN PTY LTD.