

# HSLC

## 18m Coastal Ferry



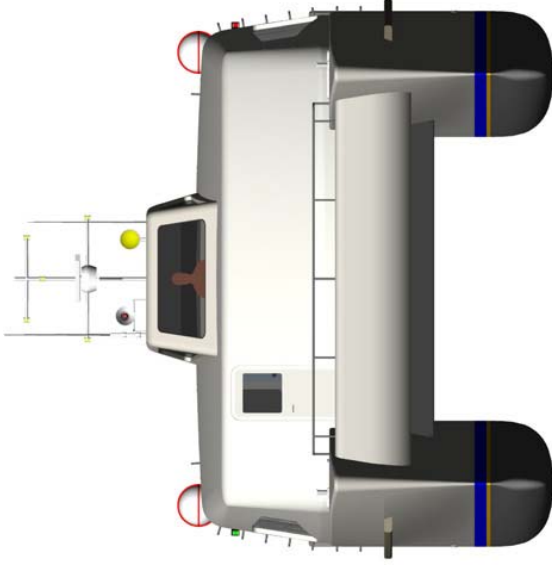
**Mark Williamson Design**

48 Sweetgum St, Ashmore Qld 4214, Australia

Ph: (617) 5597 3521 Fax: (617) 5597 3529 [www.mwdesign.net.au](http://www.mwdesign.net.au)



# 18m COASTAL FERRY



## PRINCIPAL DATA

LOA : 17.9m  
LWL : 17.0m  
Beam : 6.80m  
Draft : 0.80m  
Construction: Marine Grade Aluminium  
Main Engines: 2 x Cummins 6BTA8.3M  
221kW @ 2500rpm  
Gearbox: 2 x TD MG5061 (2.43:1)  
Propulsion: 2 x 28" FPP  
Fuel : 2 x 1000lts  
Freshwater: 200lts  
Speed : 25 knots  
Passengers: 80 + 5 aft deck  
Crew : 4



**Mark Williamson Design**  
48 Sweetgum St, Ashmore Qld 4214, Australia  
Ph: (617) 5597 3521 Fax: (617) 5597 3529 [www.mwdesign.net.au](http://www.mwdesign.net.au)

# 18m Coastal Ferry

# Vessel Description

**VESSEL TYPE:** Mid-Engine, round bilge semi-swath Catamaran for coastal applications

## **SURVEY AND CLASSIFICATION:**

The vessel shall be classed Det Norske Veritas (DNV) with the notation  $\nabla$ 1A1 HSLC R4 Passenger, EO, shall comply with the requirements of Queensland Survey USL 2C

## **STRUCTURE:**

Materials (to be inspected as required by Survey Authority and Owners Representative):

Sheet and Plate - Grade 5083-H321, H116, 5086-H32

Extrusions - Grade 6061-T6, 6082-T5

Filler Wire - Grade 5356

Castings - Grade CC601-T1

All welders to be approved by the Survey Authority.

**OUTFIT AND FINISHING:** The vessel shall be laid out as per the general arrangement drawings and all fittings and equipment required for the operation of the vessel shall be supplied.

## **LAYOUT**

Main Deck: Passenger Seating for 80 (850mm pitch), luggage racks 2.5x0.9m, wheelhouse, 2 x toilet fwd.

Main Deck Aft: alloy bench seating, 1 off 2.5m (5pax)

## **FITOUT**

Floors: Main Access, WHS, : "Aquadeck"  
Internal Passenger Space : 100% Wool Carpet

External Decks : Non-skid paint

Linings: Sides: Aluminium honeycomb panels (Ayr-lite)  
Bulkheads: Aluminium honeycomb panels (Ayr-lite)



**AIR CONDITIONING SYSTEM:** Reverse cycle system is based on an water cooled compressor nit linked up to a multiple number of fan coil units. Design of the system shall be based upon an ambient operating temperature of 35°C (95% RH) and sea water of 30°C. Crew spaces to be cooled/heated to 21°C (50% RH).

## **NAVIGATION and COMMUNICATION EQUIPMENT:**

Furuno Model 1510 15" Radar with 6ft antenna 15mtr cable ARP17 Plotter GCY8 Gyro converter

JMC 1400 Dual frequency sounder 50/200 1kw

JMC NP-30NT with GPS ANTENNA

ICOM-IC-M700 complete with tuner and Banten HF antenna

Icom IC-M502 VHF Radio with Banten antenna

Sailor C2906 Inmarsat C VMS unit

KVH Trac phone Inmarsat M

Navicontrol Autopilot 3003 Gold with second station

Cetrek "Poseidon" compass

Den Haan DHR CS-220 Searchlight



**Mark Williamson Design**

48 Sweetgum St, Ashmore Qld 4214, Australia

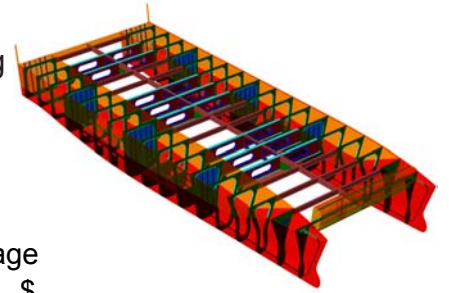
Ph: (617) 5597 3521 Fax: (617) 5597 3529 www.mwdesign.net.au



# 18m Coastal Ferry Aluminium Kit

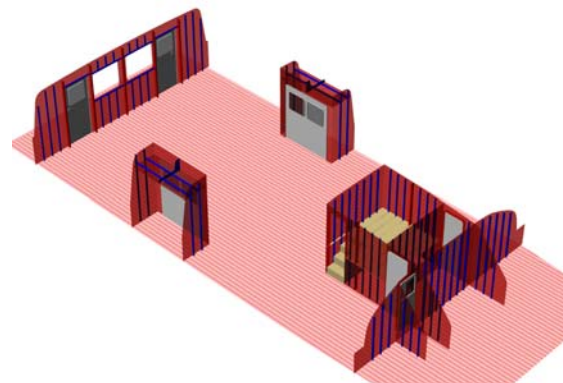
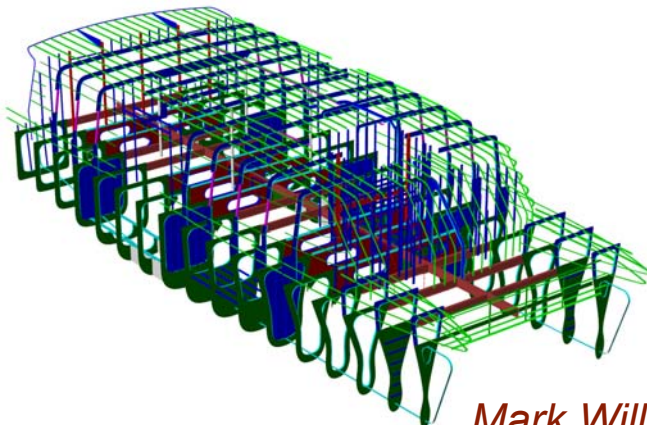
Ally kit includes:

structural and arrangement drawings, welding schedule, part nesting plating (plasma/router cutting, powder marking) and extrusions does not include hatch's, watertight doors.



## Aluminium Summary

Description	Wastage	Cost/kg	kg	+ wastage kg	\$
3pl	20%	6.20	947	1137	7046
4pl	20%	6.20	1791	2149	13325
5pl	20%	6.20	1881	2257	13995
6pl	20%	6.20	2413	2896	17952
8pl	20%	6.20	64	77	475
10pl	20%	6.20	99	119	738
16pl	20%	6.20	75	90	556
4mm Treadplate	20%	6.20	75	90	559
2mm 250 Planking	10%	6.20	968	1065	6605
54x4-32x4 T	10%	6.20	213	235	1455
60x4-50x6 T	10%	6.20	584	642	3982
100x5-45x8 T	10%	6.20	469	516	3198
200x5-80x8 I	10%	6.20	246	270	1676
50x4 FB	10%	6.20	252	277	1716
50x6 FB	10%	6.20	239	263	1630
80x8 FB	10%	6.20	131	145	896
100x6 FB	10%	6.20	102	113	699
100x10 FB	10%	6.20	158	174	1080
10x1.6 tube	10%	6.20	1	1	4
25x3 tube	10%	6.20	68	74	461
50x3 tube	10%	6.20	21	23	140
76.2x6.35 tube	10%	6.20	49	53	331
160x10 tube	10%	6.20	51	56	347
51x51x3.2 RHS	10%	6.20	14	16	98
76x76x6.35 RHS	10%	6.20	4	4	24
80x40x4 CH	10%	6.20	13	14	89
<b>Totals</b>			<b>10927</b>	<b>12755</b>	<b>79078</b>



**Mark Williamson Design**

48 Sweetgum St, Ashmore Qld 4214, Australia

Ph: (617) 5597 3521 Fax: (617) 5597 3529 [www.mwdesign.net.au](http://www.mwdesign.net.au)

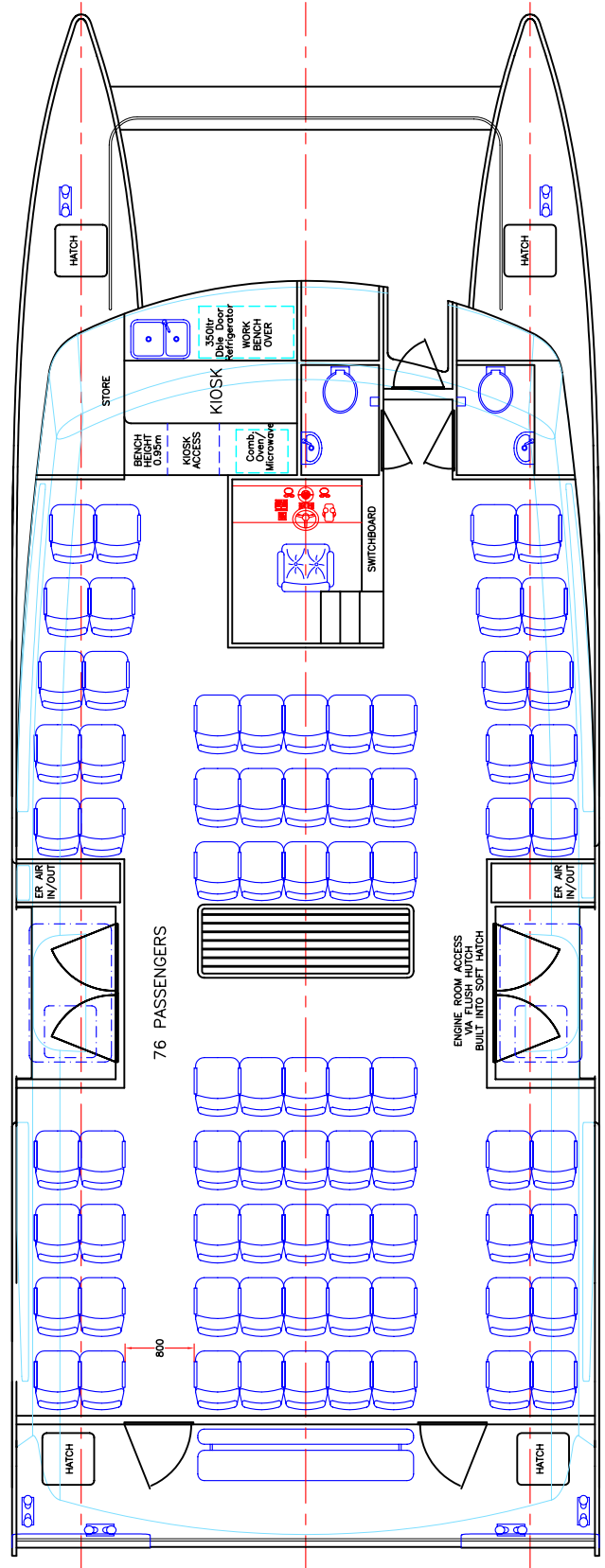
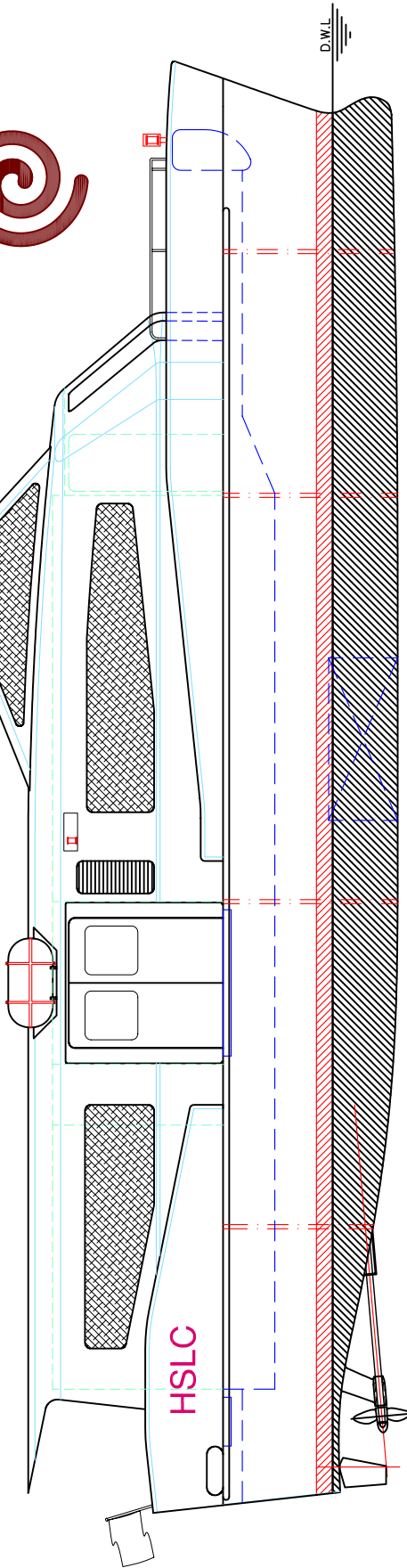


# 18m COASTAL FERRY

## 81 PASSENGERS 25 KNOTS



LOA: 17.9m  
 LOP: 17.0m  
 BEAM: 6.8m  
 DRAFT: 0.8m  
 FUEL: 2 x 1000lts  
 WATER: 200lts  
 MAIN ENGINES: 2 x CUMMINS 6CTA 8.3M  
 224kW @ 2500rpm  
 GEARBOX: 2 x TWIN DISC 5061 (2.43:1)  
 PROPULSION: 2 x 28" 4 BLADE FPP  
 MAX SPEED: 25knots  
 PASSENGERS: 76 + 5



copyright ©

THIS DRAWING AND/OR SPECIFICATION IS THE PROPERTY OF MARK WILLIAMSON DESIGN PTY LTD. IT IS NOT TO BE USED BY OR DISCLOSED TO ANY THIRD PERSON WITHOUT THE EXPRESSED PERMISSION OF MARK WILLIAMSON DESIGN PTY LTD.

**MARK WILLIAMSON DESIGN**

Consulting Naval Architects & Mechanical Engineers

48 Sweetgum St, Ashmore, Queensland 4214, Australia  
 Ph: 617 5597 3521 Fax: 617 5597 3529 www.mwdesign.net.au

18m CATAMARAN FERRY

TITLE: GENERAL ARRANGEMENT

DWG No: P18B-100

SCALE:

DATE: 2/12/2003

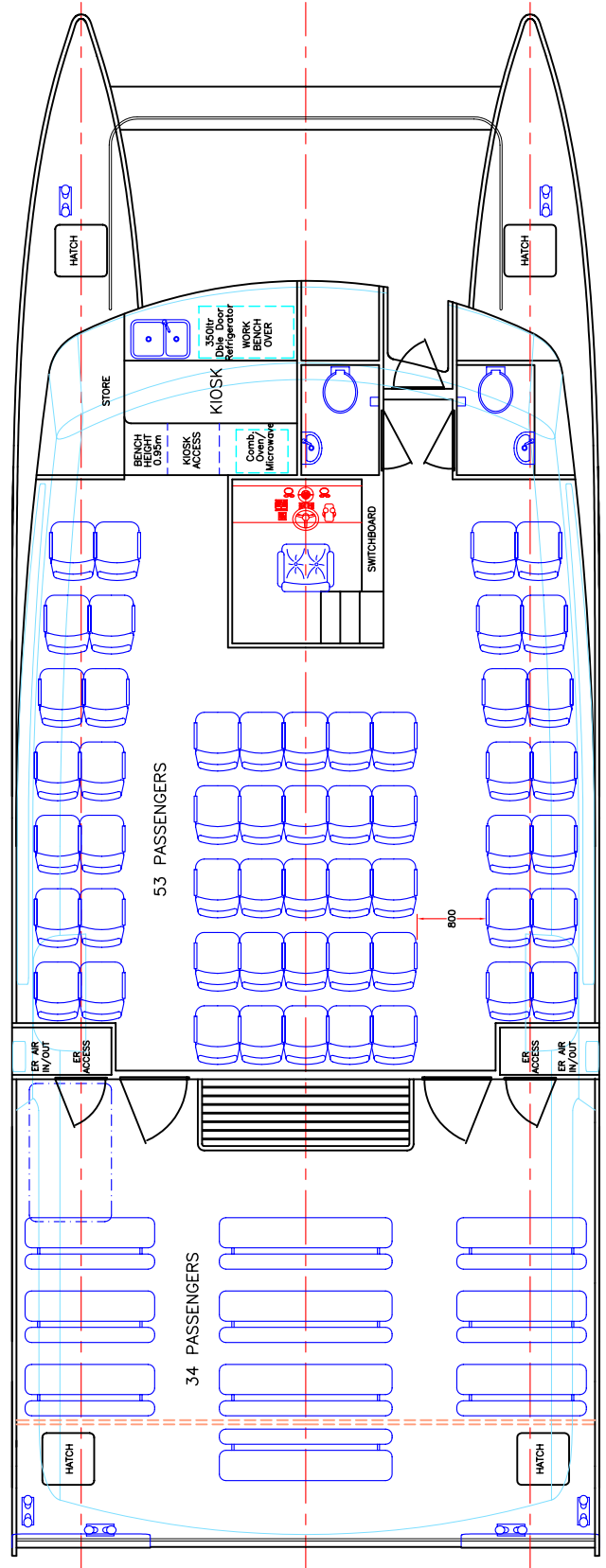
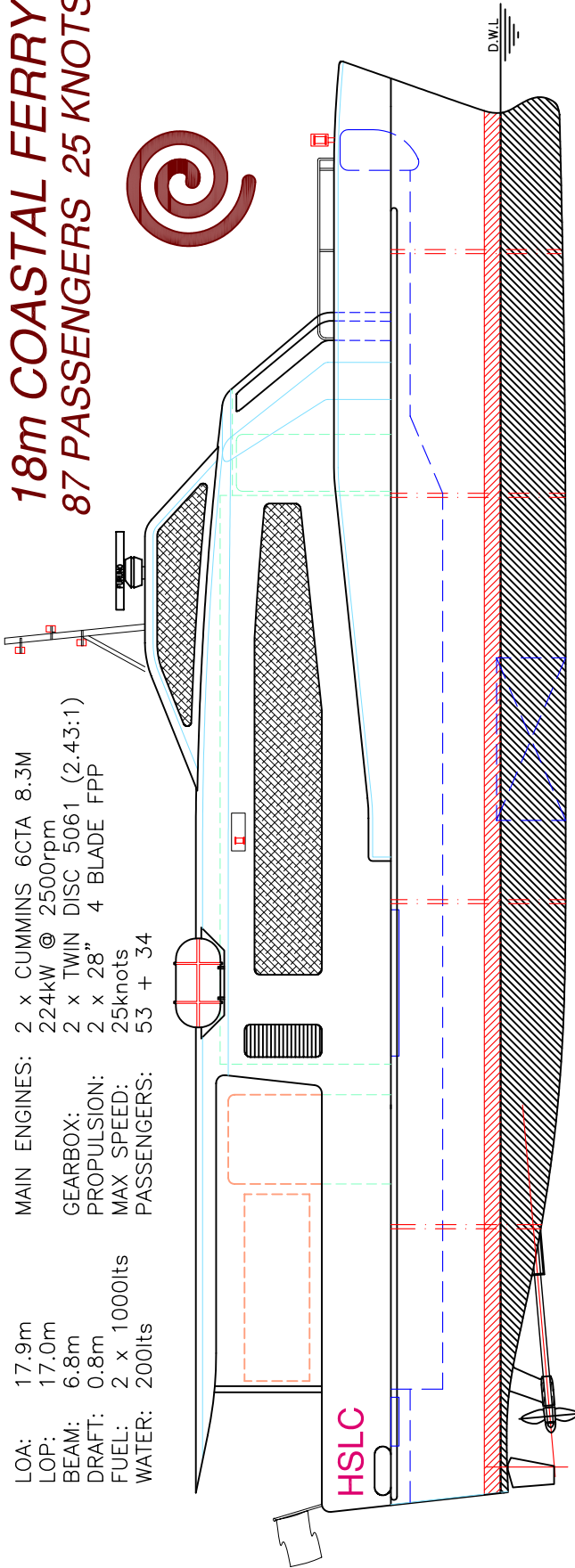
DRAWN: MDW

# 18m COASTAL FERRY

## 87 PASSENGERS 25 KNOTS



LOA: 17.9m  
 LOP: 17.0m  
 BEAM: 6.8m  
 DRAFT: 0.8m  
 FUEL: 2 x 1000lts  
 WATER: 200lts  
 MAIN ENGINES: 2 x CUMMINS 6CTA 8.3M  
 224kW @ 2500rpm  
 GEARBOX: 2 x TWIN DISC 5061 (2.43:1)  
 PROPULSION: 2 x 28" 4 BLADE FPP  
 MAX SPEED: 25knots  
 PASSENGERS: 53 + 34



copyright ©

THIS DRAWING AND/OR SPECIFICATION IS THE PROPERTY OF MARK WILLIAMSON DESIGN PTY LTD. IT IS NOT TO BE USED BY OR DISCLOSED TO ANY THIRD PERSON WITHOUT THE EXPRESSED PERMISSION OF MARK WILLIAMSON DESIGN PTY LTD.

**MARK WILLIAMSON DESIGN**

Consulting Naval Architects & Mechanical Engineers

48 Sweetgum St, Ashmore, Queensland 4214, Australia  
 Ph: 617 5597 3521 Fax: 617 5597 3529 www.mwdesign.net.au

18m CATAMARAN FERRY

TITLE: GENERAL ARRANGEMENT

DWG No: P18T-100

SCALE:

DATE: 22/1/2004

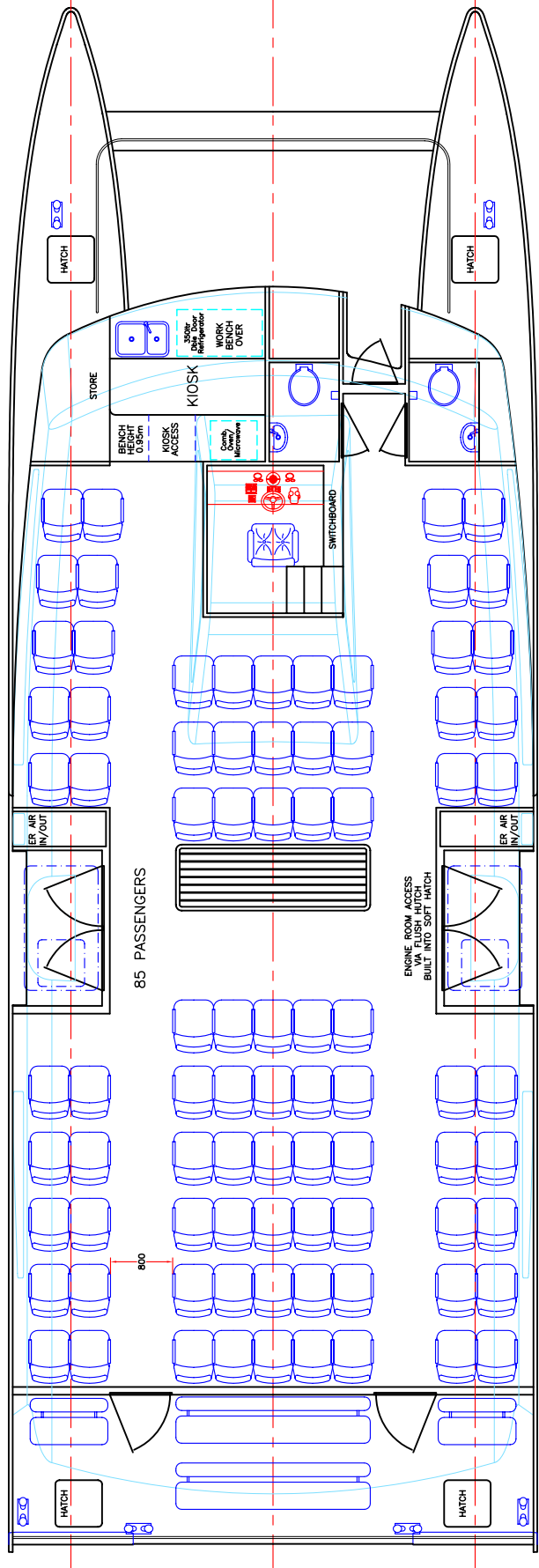
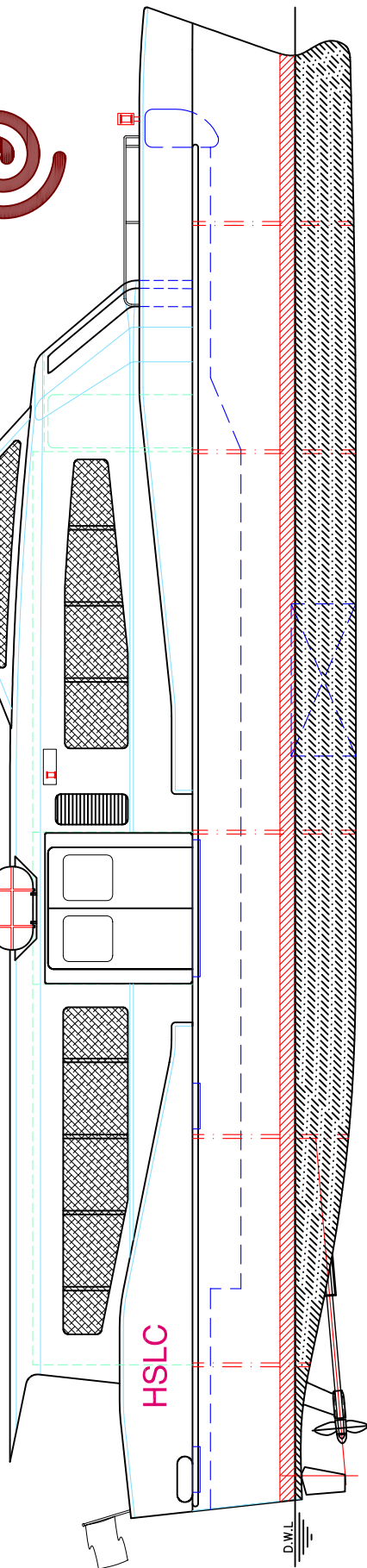
DRAWN: MDW

# 20m COASTAL FERRY 99 PASSENGERS 25 KNOTS



**MAIN ENGINES:** 2 x CUMMINS 6CTA 8.3M  
 224kW @ 2500rpm  
**GEARBOX:** 2 x TWIN DISC 5061 (2.43:1)  
**PROPULSION:** 2 x 28" 4 BLADE FPP  
**MAX SPEED:** 24knots  
**PASSENGERS:** 85 + 14

**LOA:** 19.9m  
**LOP:** 19.0m  
**BEAM:** 6.8m  
**DRAFT:** 0.8m  
**FUEL:** 2 x 1000lts  
**WATER:** 200lts



copyright ©

THIS DRAWING AND/OR SPECIFICATION IS THE PROPERTY OF MARK WILLIAMSON DESIGN PTY LTD. IT IS NOT TO BE USED BY OR DISCLOSED TO ANY THIRD PERSON WITHOUT THE EXPRESSED PERMISSION OF MARK WILLIAMSON DESIGN PTY LTD.

**MARK WILLIAMSON DESIGN**

*Consulting Naval Architects & Mechanical Engineers*

48 Sweetgum St, Ashmore, Queensland 4214, Australia  
 Ph: 617 5597 3521 Fax: 617 5597 3529 www.mwdesign.net.au

**VESSEL:** 20m CATAMARAN FERRY

**TITLE:** GENERAL ARRANGEMENT

**DWG No:** P20A-100

**SCALE:**

**DATE:** 2/12/2003

**DRAWN:** MDW

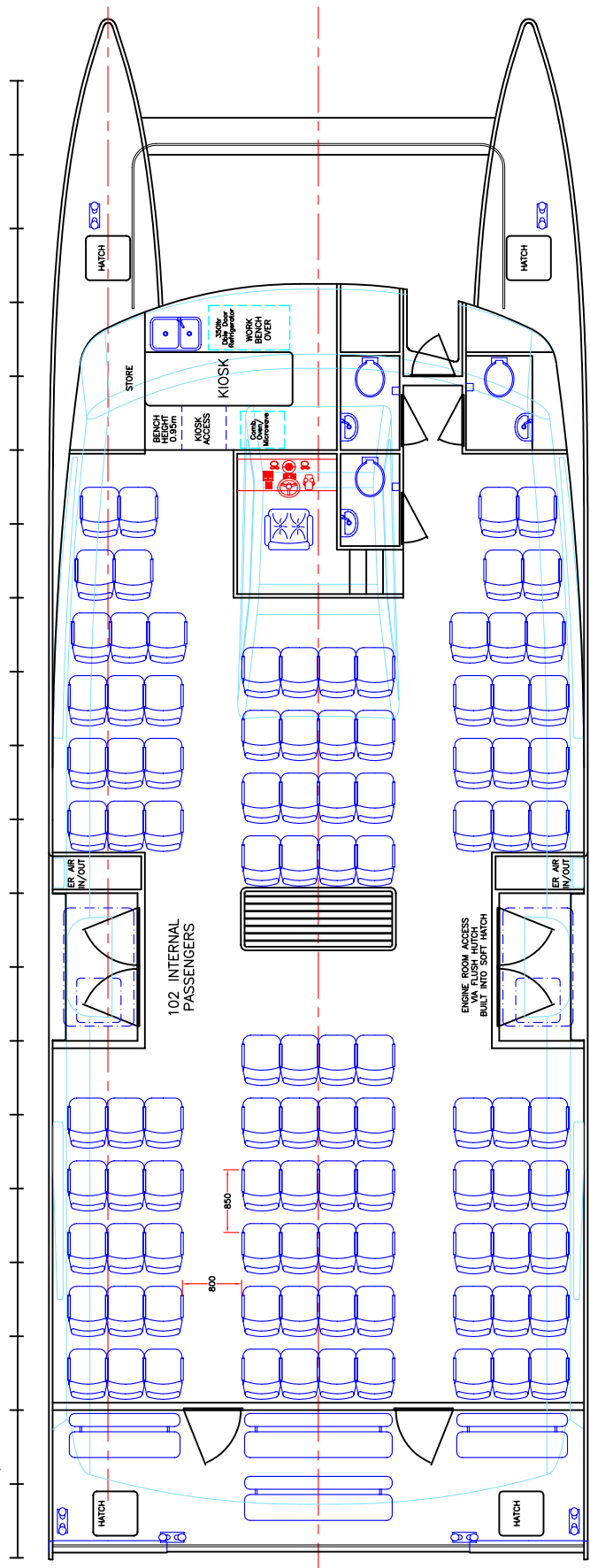
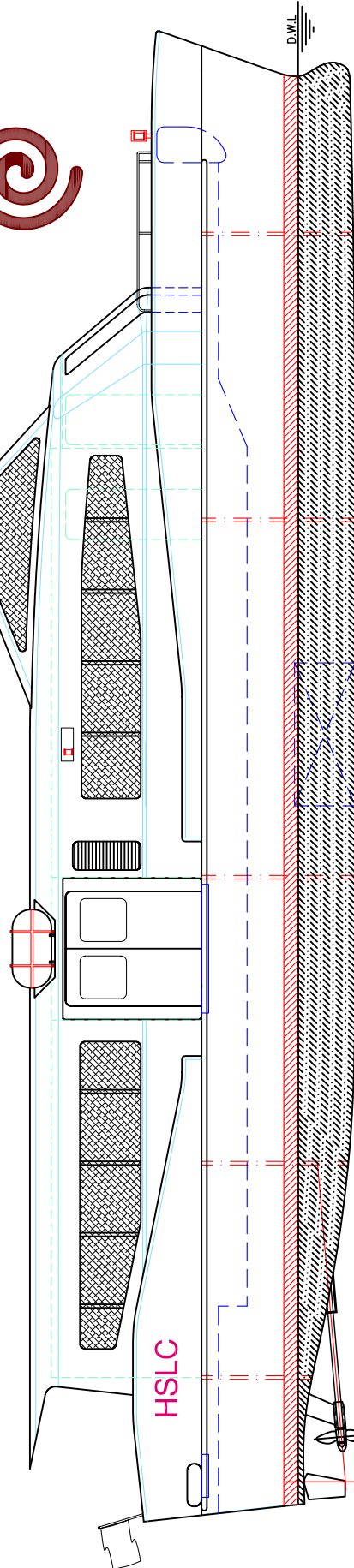
# 21m COASTAL FERRY

## 116 PASSENGERS 23 KNOTS



**MAIN ENGINES:** 2 x CUMMINS 6CTA 8.3M  
 224kW @ 2500rpm  
**GEARBOX:** 2 x TWIN DISC 5061 (2.43:1)  
**PROPULSION:** 2 x 28" 4 BLADE FPP  
**MAX SPEED:** 23knots  
**PASSENGERS:** 102 + 14

**LOA:** 20.9m  
**LOP:** 20.0m  
**BEAM:** 7.3m  
**DRAFT:** 0.8m  
**FUEL:** 2 x 1000lts  
**WATER:** 200lts



copyright ©

THIS DRAWING AND/OR SPECIFICATION IS THE PROPERTY OF MARK WILLIAMSON DESIGN PTY LTD. IT IS NOT TO BE USED BY OR DISCLOSED TO ANY THIRD PERSON WITHOUT THE EXPRESSED PERMISSION OF MARK WILLIAMSON DESIGN PTY LTD.

### MARK WILLIAMSON DESIGN

Consulting Naval Architects & Mechanical Engineers

48 Sweetgum St, Ashmore, Queensland 4214, Australia  
 Ph: 617 5597 3521 Fax: 617 5597 3529 www.mwdesign.net.au

VESSEL: 21m CATAMARAN FERRY

TITLE: GENERAL ARRANGEMENT

DWG No: P21A-100

SCALE:

DATE: 3/12/2003

DRAWN: MDW