



# 16.2m Fast Patrol Craft

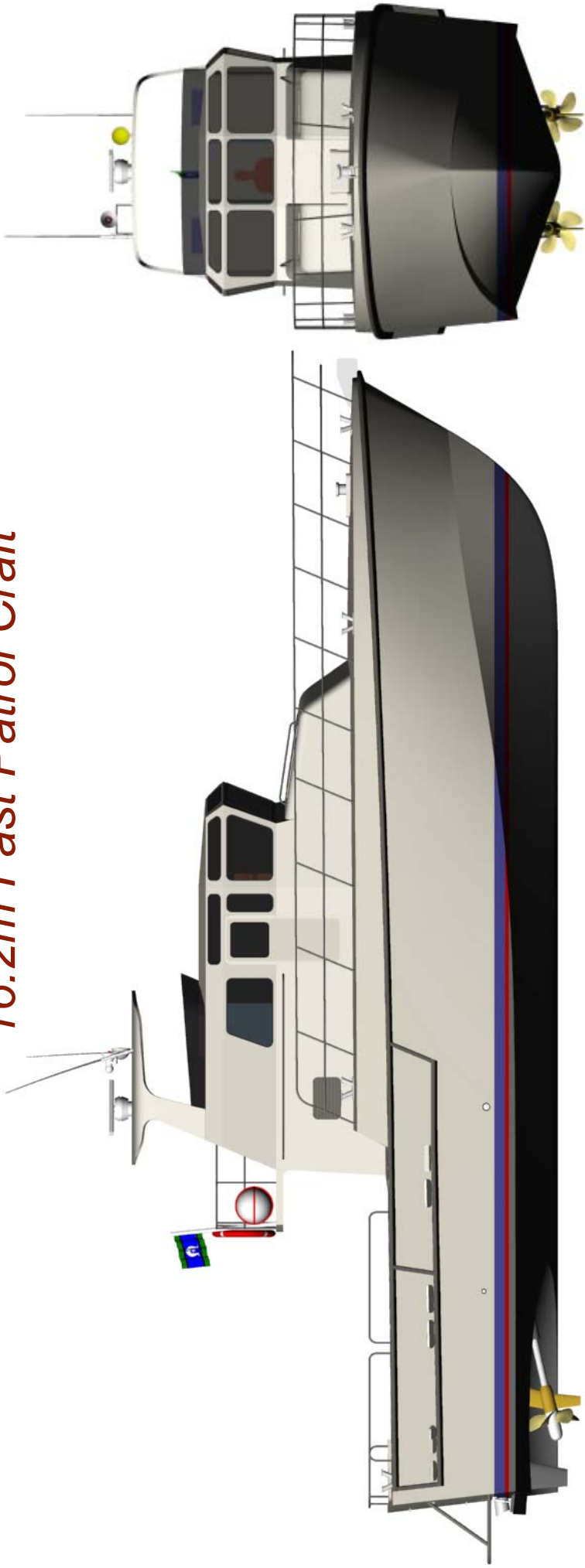


**Mark Williamson Design**

48 Sweetgum St, Ashmore Qld 4214, Australia

Ph: (617) 5597 3521 Fax: (617) 5597 3529 [www.mwdesign.net.au](http://www.mwdesign.net.au)

# 16.2m Fast Patrol Craft



LOA : 16.2m  
LWL : 14.7m  
Beam : 4.60m  
Draft : 1.00m  
Fuel : 3000lts  
Power : 2 x 735kW  
Speed : 37 knots

Classification :  
DNV #1A1 HSLC R1 PATROL

Construction :  
Marine Grade Aluminium

**Mark Williamson Design**  
48 Sweetgum St, Ashmore Qld 4214, Australia  
Ph: (617) 5597 3521 Fax: (617) 5597 3529 [www.mwdesign.net.au](http://www.mwdesign.net.au)



# 16.2m Fast Patrol Craft

## Vessel Description

**VESSEL TYPE:** Semi-Displacement Hard Chine Catamaran for coastal applications

### **SURVEY AND CLASSIFICATION:**

DNV ✕1A1 HSLC R Patrol , shall comply with the requirements of Queensland Survey USL 2B

### **STRUCTURE:**

Materials (to be inspected as required by Survey Authority and Owners Representative):

Sheet and Plate - Grade 5083-H321, H116, 5086-H32. Extrusions - Grade 6061-T6, 6082-T5

### **OUTFIT AND FINISHING:**

The vessel shall be laid out as per the general arrangement drawings and all fittings and equipment required for the operation of the vessel shall be supplied.

**Layout:** Main Deck: Operations Room  
Lower Deck: Galley / Mess Area, Twin Berth Officers Cabin, Toilet, Shower, 4 berth crew cabin  
Aft Deck: 22sqm work deck, Toilet/Shower. Optional 4.0 metre RIB stowed in aft deck recess, deployed and retrieved via hinged ramp on transom.

**Fitout:** Floors: "Aquadeck"  
Lining's: External Decks : Non-skid paint  
Sides Aluminium honeycomb panels (Ayr-lite)  
Bulkheads Aluminium honeycomb panels (Ayr-lite)

### **Noise Levels**

The noise level at the centre of each crew and passenger area shall not exceed 75 dB(A) and the noise level at the centre of the wheelhouse shall not exceed 65 dB(A).

### **AIR CONDITIONING SYSTEM:**

Reverse cycle system is based on an water cooled compressor unit linked up to a multiple number of fan coil units. Design of the system shall be based upon an ambient operating temperature of 40°C (95% RH) and sea water of 320°C. Crew spaces to be cooled/heated to 21°C (50% RH).

### **NAVIGATION and COMMUNICATION EQUIPMENT:**

Furuno Model 1510 15" Radar with 6ft antenna 15mtr cable ARP17 Plotter GCY8 Gyro converter  
JMC 1400 Dual frequency sounder 50/200 1kw  
JMC NP-30NT with GPS ANTENNA  
ICOM-IC-M700 complete with tuner and Banten HF antenna  
Icom IC-M502 VHF Radio with Banten antenna  
Sailor C2906 Inmarsat C VMS unit  
KVH Trac phone Inmarsat M  
Navicontrol Autopilot 3003 Gold with second station  
Cetrek "Poseidon" compass  
Den Haan DHR CS-220 Searchlight

Closed circuit TV monitoring of engine room and main deck. All navigation equipment interfaced to Flying Bridge displays.

**Mark Williamson Design**

48 Sweetgum St, Ashmore Qld 4214, Australia

Ph: (617) 5597 3521 Fax: (617) 5597 3529 [www.mwdesign.net.au](http://www.mwdesign.net.au)



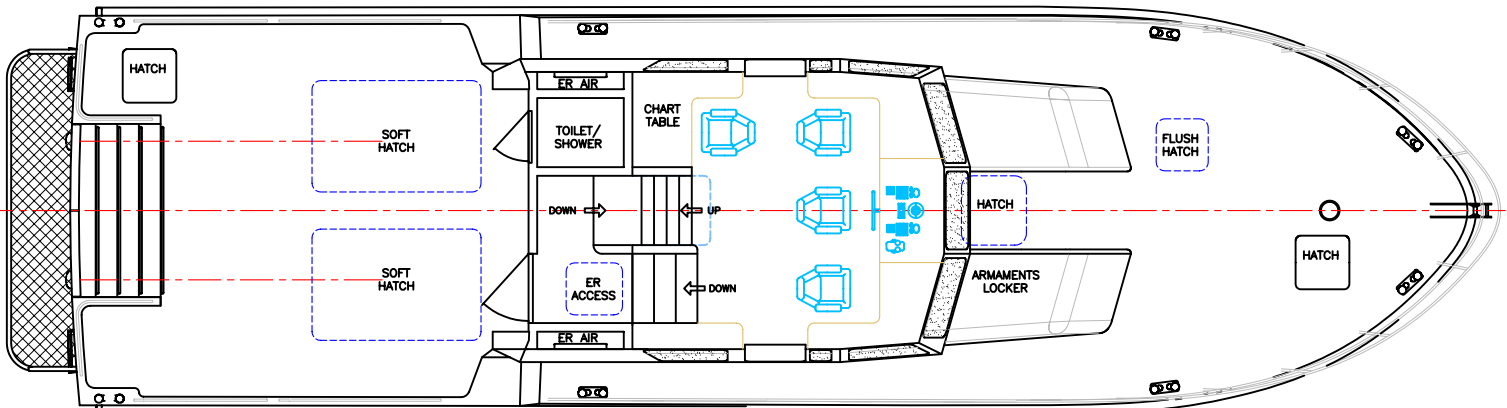
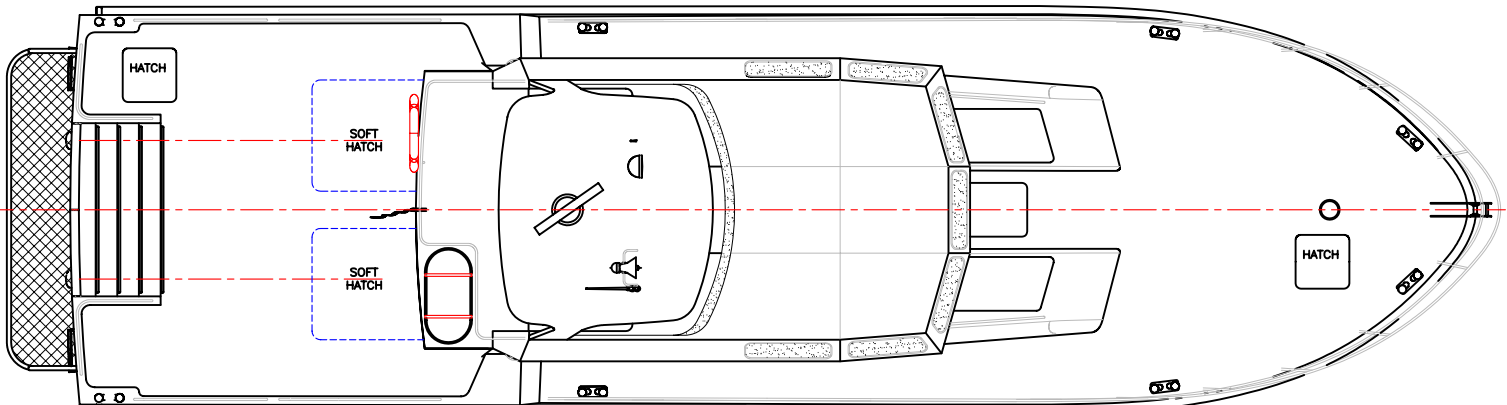
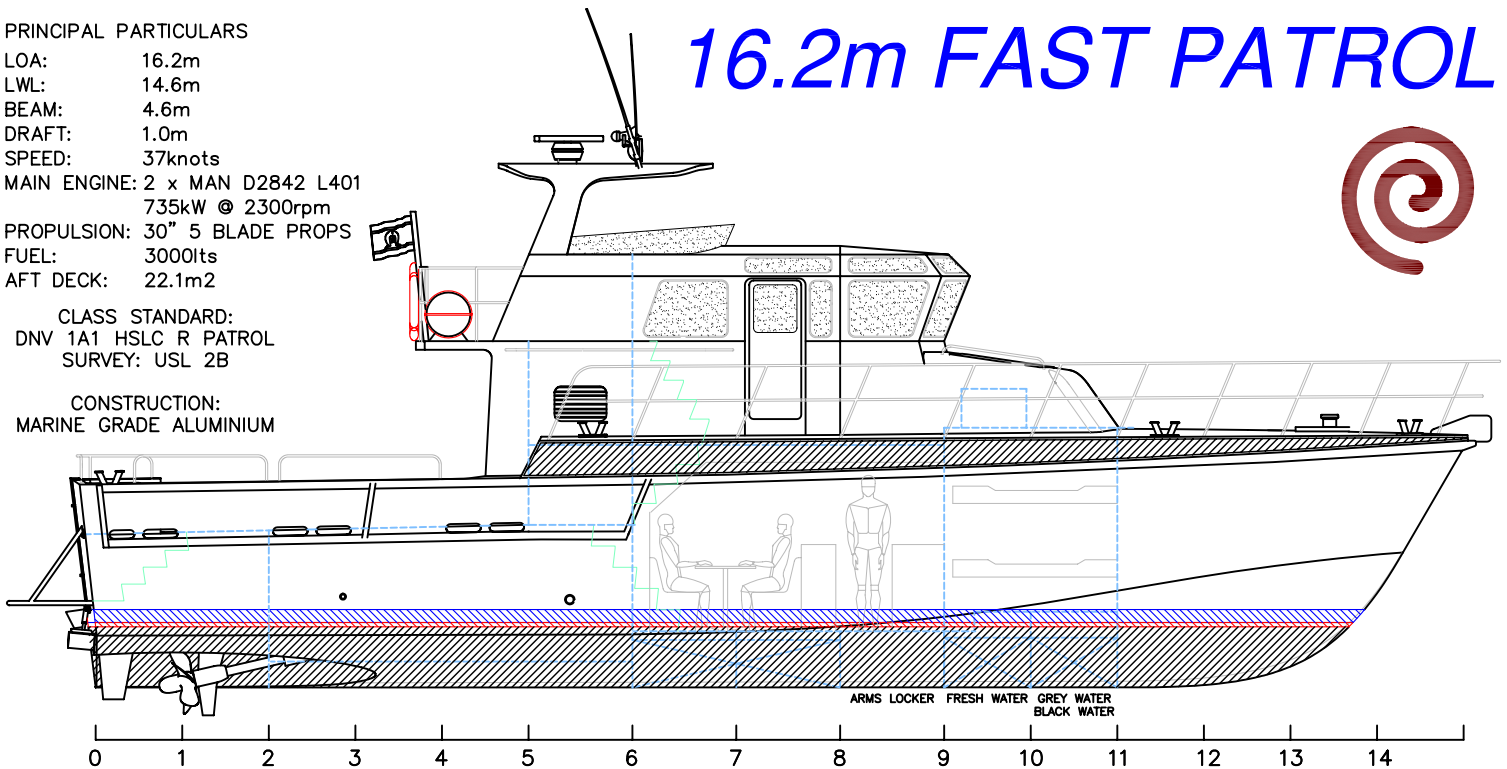
PRINCIPAL PARTICULARS

LOA: 16.2m  
 LWL: 14.6m  
 BEAM: 4.6m  
 DRAFT: 1.0m  
 SPEED: 37knots  
 MAIN ENGINE: 2 x MAN D2842 L401  
 735kW @ 2300rpm  
 PROPULSION: 30" 5 BLADE PROPS  
 FUEL: 3000lts  
 AFT DECK: 22.1m2

CLASS STANDARD:  
 DNV 1A1 HSLC R PATROL  
 SURVEY: USL 2B

CONSTRUCTION:  
 MARINE GRADE ALUMINIUM

# 16.2m FAST PATROL



copyright ©

THIS DRAWING AND/OR SPECIFICATION IS THE PROPERTY OF MARK WILLIAMSON DESIGN PTY LTD. IT IS NOT TO BE USED BY OR DISCLOSED TO ANY THIRD PERSON WITHOUT THE EXPRESSED PERMISSION OF MARK WILLIAMSON DESIGN PTY LTD.

**MARK WILLIAMSON DESIGN**  
 Consulting Naval Architects & Mechanical Engineers

48 Sweetgum St, Ashmore, Queensland 4214, Australia  
 Ph: 617 5597 3521 Fax: 617 5597 3529 www.mwdesign.net.au

VESSEL: 16.2m PATROL

TITLE: GENERAL ARRANGEMENT

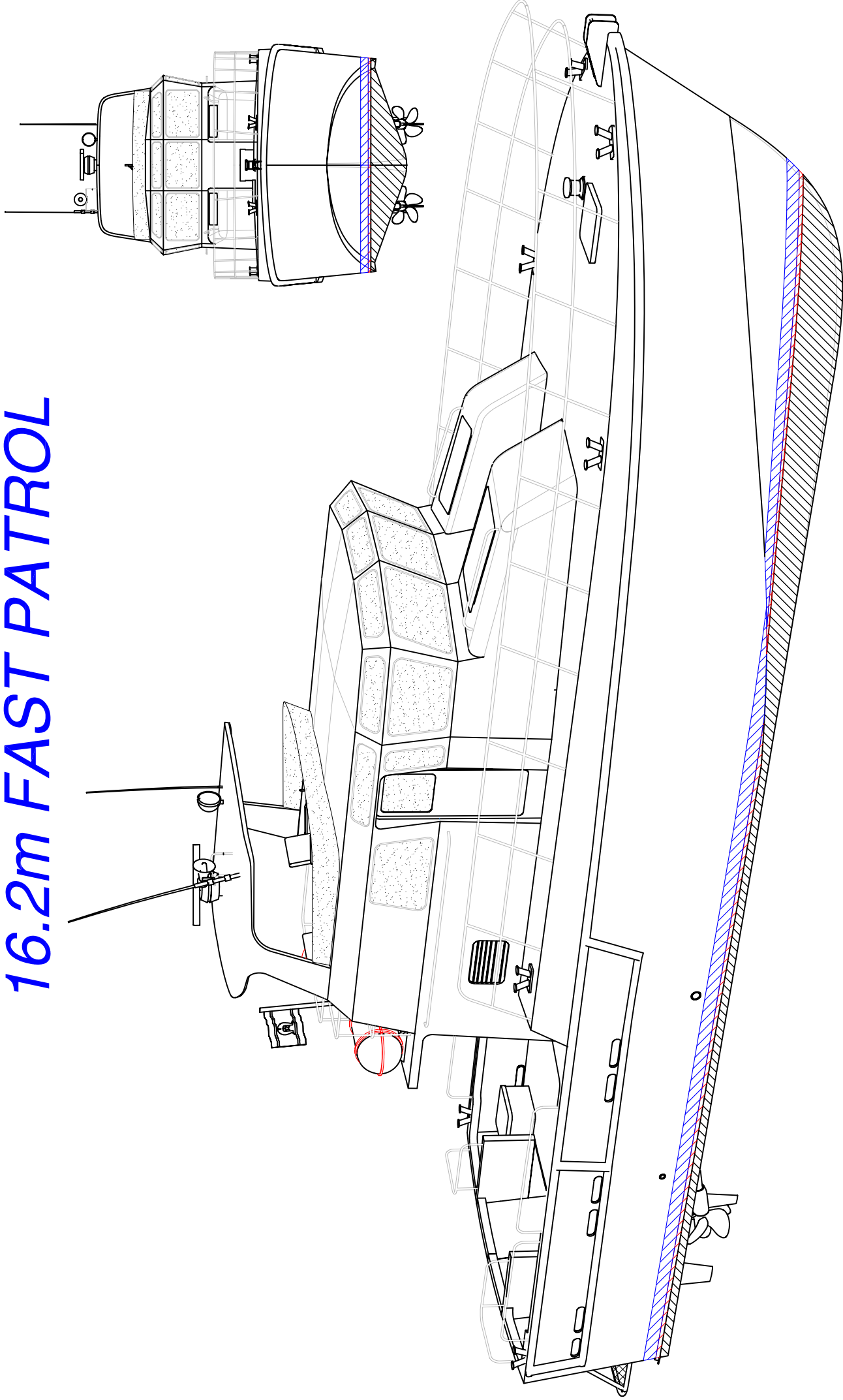
DWG No: P162-100

SCALE:

DATE: 11/7/2004

DRAWN: MDW

# 16.2m FAST PATROL



copyright ©

THIS DRAWING AND/OR SPECIFICATION IS THE PROPERTY OF MARK WILLIAMSON DESIGN PTY LTD. IT IS NOT TO BE USED BY OR DISCLOSED TO ANY THIRD PERSON WITHOUT THE EXPRESSED PERMISSION OF MARK WILLIAMSON DESIGN PTY LTD.

**MARK WILLIAMSON DESIGN**

*Consulting Naval Architects & Mechanical Engineers*

48 Sweetgum St, Ashmore, Queensland 4214, Australia  
Ph: 617 5597 3521 Fax: 617 5597 3529 [www.mwdesign.net.au](http://www.mwdesign.net.au)

VESSEL: 16.2m PATROL

TITLE: GENERAL ARRANGEMENT

DWG No: P162-100a  
SCALE:

DATE: 11/7/2004  
DRAWN: MDW