

# HSLC

## 15m Coastal Ferry



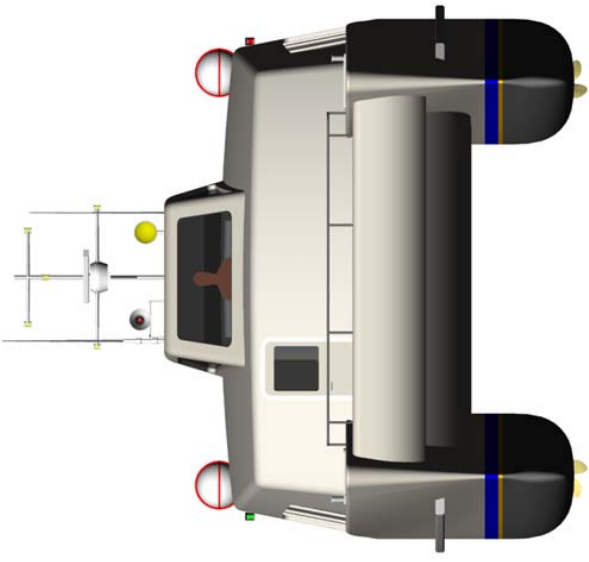
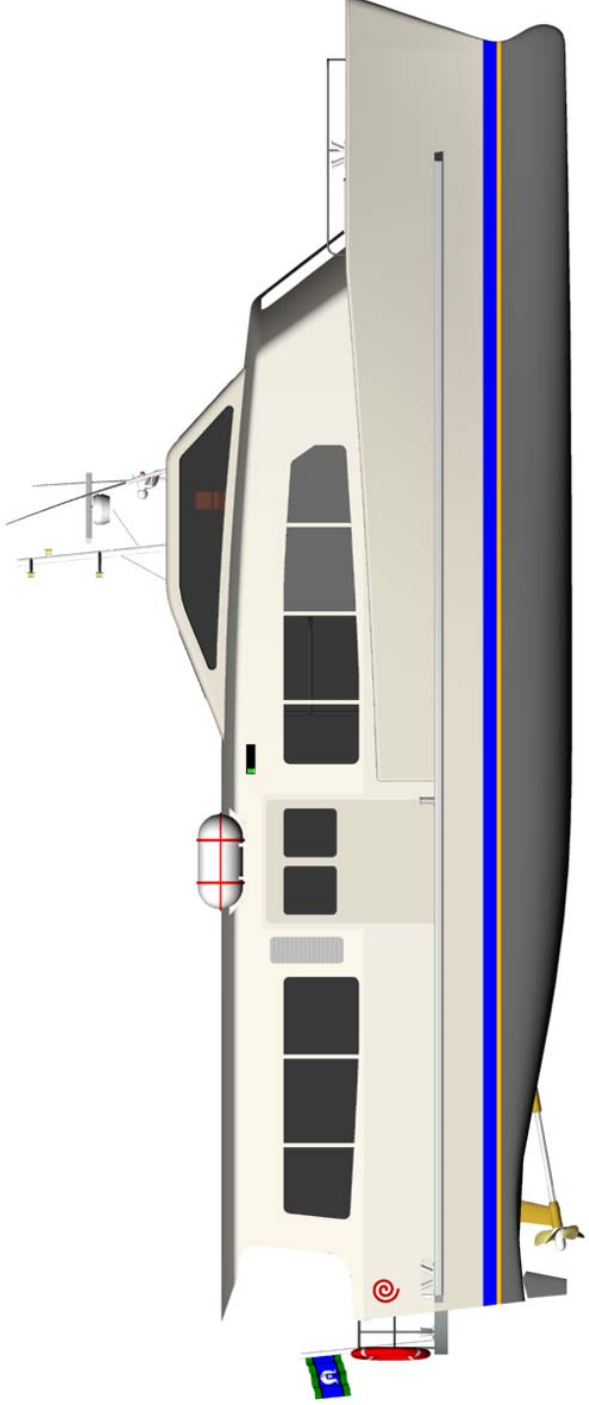
**Mark Williamson Design**

48 Sweetgum St, Ashmore Qld 4214, Australia

Ph: (617) 5597 3521 Fax: (617) 5597 3529 [www.mwdesign.net.au](http://www.mwdesign.net.au)



# 15m COASTAL FERRY



## PRINCIPAL DATA

- LOA : 15.30m
- LWL : 14.20m
- Beam : 5.80m
- Draft : 0.80m
- Construction: Hand Laid GRP
- Main Engines: 2 x Cummins 6BTA5.9M  
194kW @ 2600rpm
- Gearbox: 2 x ZF80A (2.45:1)
- Propulsion: 2 x 28" FPP
- Fuel : 2 x 1000lts
- Freshwater: 200lts
- Speed : 26 knots
- Passengers: 46 + 3 aft deck
- Crew : 2



**Mark Williamson Design**  
48 Sweetgum St, Ashmore Qld 4214, Australia  
Ph: (617) 5597 3521 Fax: (617) 5597 3529 [www.mwdesign.net.au](http://www.mwdesign.net.au)

# 15m Coastal Ferry

# Vessel Description

**VESSEL TYPE:** Mid-Engine, round bilge semi-swath Catamaran for coastal applications

## **SURVEY AND CLASSIFICATION:**

The vessel shall be classed Det Norske Veritas (DNV) with the notation  $\nabla$ 1A1 HSLC R4 Passenger, EO, shall comply with the requirements of Queensland Survey USL 1C

## **STRUCTURE:**

Materials (to be inspected as required by Survey Authority and Owners Representative):

Sheet and Plate - Grade 5083-H321, H116, 5086-H32

Extrusions - Grade 6061-T6, 6082-T5

Filler Wire - Grade 5356

Castings - Grade CC601-T1

All welders to be approved by the Survey Authority.

**OUTFIT AND FINISHING:** The vessel shall be laid out as per the general arrangement drawings and all fittings and equipment required for the operation of the vessel shall be supplied.

## **LAYOUT**

Main Deck: Passenger Seating for 80 (850mm pitch), luggage racks 2.5x0.9m, wheelhouse, 2 x toilet fwd.

Main Deck Aft: alloy bench seating, 1 off 2.5m (5pax)

## **FITOUT**

Floors: Main Access, WHS, : "Aquadeck"  
Internal Passenger Space : 100% Wool Carpet

External Decks : Non-skid paint

Linings: Sides: Aluminium honeycomb panels (Ayr-lite)  
Bulkheads: Aluminium honeycomb panels (Ayr-lite)

**AIR CONDITIONING SYSTEM:** Reverse cycle system is based on an water cooled compressor nit linked up to a multiple number of fan coil units. Design of the system shall be based upon an ambient operating temperature of 35°C (95% RH) and sea water of 30°C. Crew spaces to be cooled/heated to 21°C (50% RH).

## **NAVIGATION and COMMUNICATION EQUIPMENT:**

Furuno Model 1510 15" Radar with 6ft antenna 15mtr cable ARP17 Plotter GCY8 Gyro converter

JMC 1400 Dual frequency sounder 50/200 1kw

JMC NP-30NT with GPS ANTENNA

ICOM-IC-M700 complete with tuner and Banten HF antenna

Icom IC-M502 VHF Radio with Banten antenna

Sailor C2906 Inmarsat C VMS unit

KVH Trac phone Inmarsat M

Navicontrol Autopilot 3003 Gold with second station

Cetrek "Poseidon" compass

Den Haan DHR CS-220 Searchlight



**Mark Williamson Design**

48 Sweetgum St, Ashmore Qld 4214, Australia

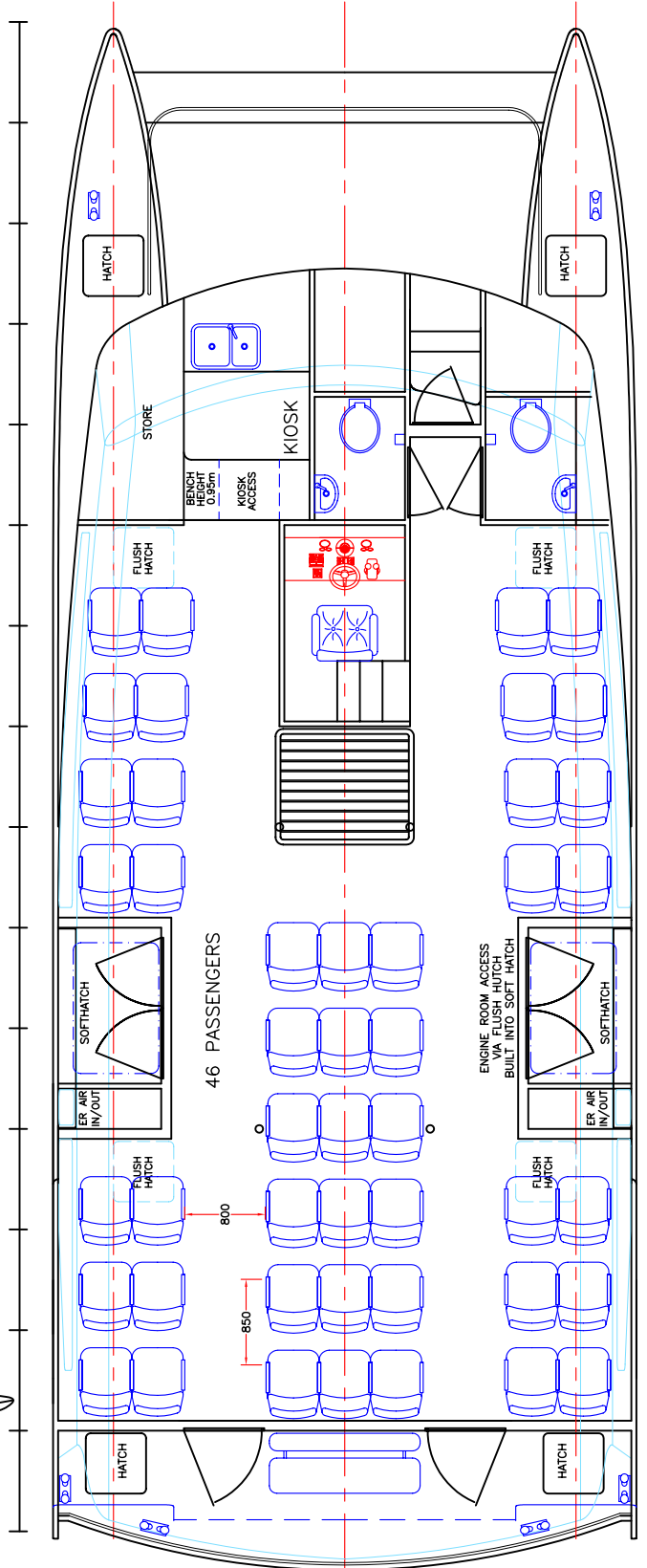
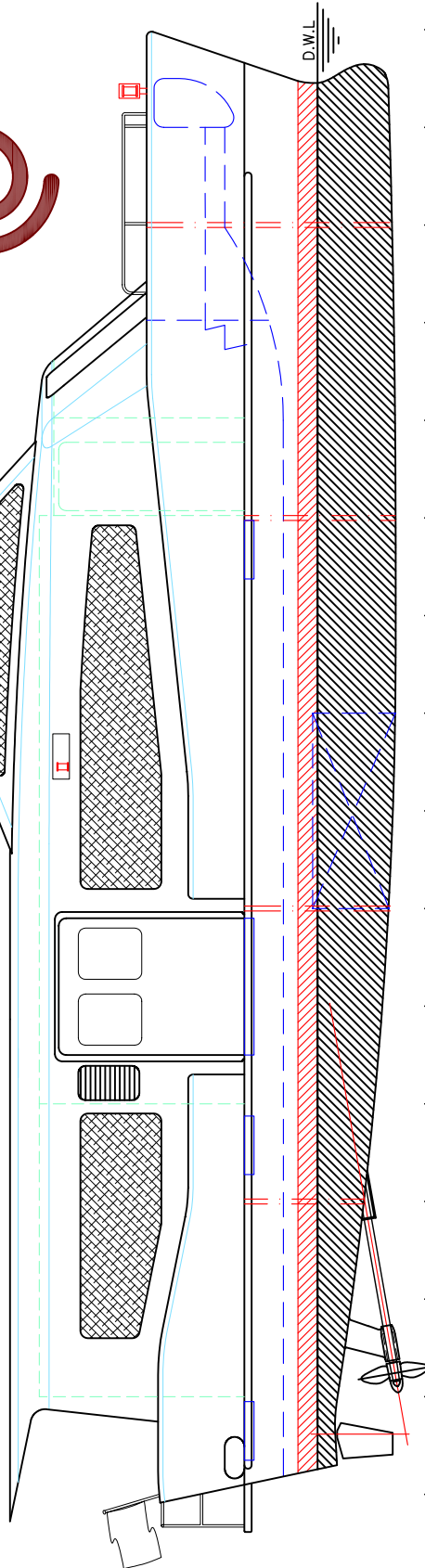
Ph: (617) 5597 3521 Fax: (617) 5597 3529 [www.mwdesign.net.au](http://www.mwdesign.net.au)



# 15m COASTAL FERRY 49 PASSENGERS 26 KNOTS



LOA: 15.3m  
 LOP: 14.2m  
 BEAM: 5.8m  
 DRAFT: 0.8m  
 FUEL: 2 x 1000lts  
 WATER: 200lts  
 MAIN ENGINES: 2 x CUMMINS 6BTA5.9-M  
 194kW @ 2600rpm  
 GEARBOX: 2 x ZF 80A (2.45:1)  
 PROPULSION: 2 x 28" 4 BLADE FPP  
 MAX SPEED: 26knots  
 PASSENGERS: 46 + 3 aft deck



copyright ©

THIS DRAWING AND/OR SPECIFICATION IS THE PROPERTY OF MARK WILLIAMSON DESIGN PTY LTD. IT IS NOT TO BE USED BY OR DISCLOSED TO ANY THIRD PERSON WITHOUT THE EXPRESSED PERMISSION OF MARK WILLIAMSON DESIGN PTY LTD.

**MARK WILLIAMSON DESIGN**

Consulting Naval Architects & Mechanical Engineers

48 Sweetgum St, Ashmore, Queensland 4214, Australia  
 Ph: 617 5597 3521 Fax: 617 5597 3529 www.mwdesign.net.au

15m CATAMARAN FERRY

TITLE: GENERAL ARRANGEMENT

DWG No: P15B-100

SCALE:

DATE: 9/12/2003

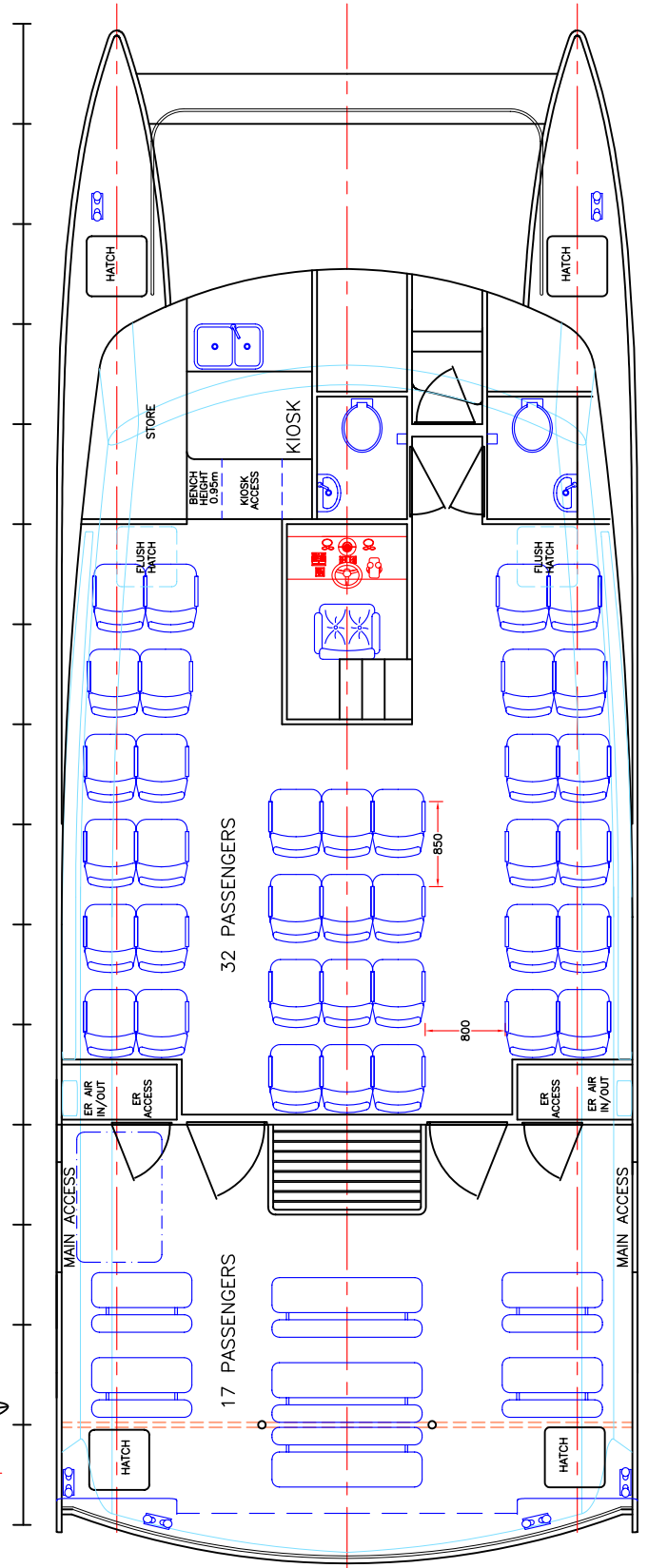
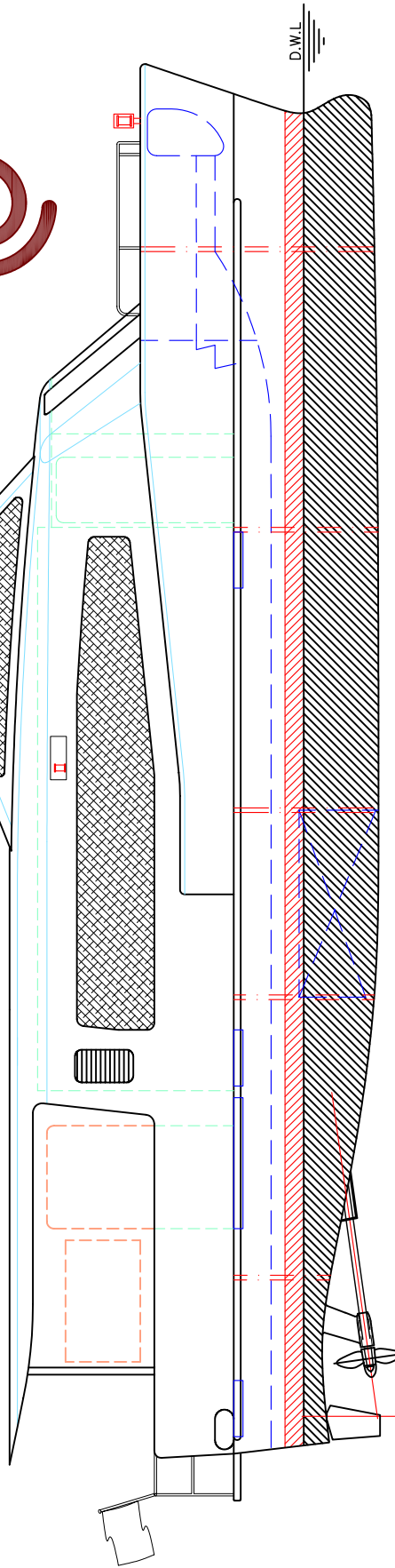
DRAWN: MDW

# 15m COASTAL FERRY 49 PASSENGERS 26 KNOTS



**MAIN ENGINES:** 2 x CUMMINS 6BTA5.9-M  
 194kW @ 2600rpm  
**GEARBOX:** 2 x ZF 80V (2.45:1)  
**PROPULSION:** 2 x 28" 4 BLADE FPP  
**MAX SPEED:** 26knots  
**PASSENGERS:** 32 + 17 aft deck

**LOA:** 15.3m  
**LOP:** 14.2m  
**BEAM:** 5.8m  
**DRAFT:** 0.8m  
**FUEL:** 2 x 1000lts  
**WATER:** 200lts



copyright ©

THIS DRAWING AND/OR SPECIFICATION IS THE PROPERTY OF MARK WILLIAMSON DESIGN PTY LTD. IT IS NOT TO BE USED BY OR DISCLOSED TO ANY THIRD PERSON WITHOUT THE EXPRESSED PERMISSION OF MARK WILLIAMSON DESIGN PTY LTD.

## MARK WILLIAMSON DESIGN

Consulting Naval Architects & Mechanical Engineers

48 Sweetgum St, Ashmore, Queensland 4214, Australia  
 Ph: 617 5597 3521 Fax: 617 5597 3529 www.mwdesign.net.au

15m CATAMARAN FERRY

TITLE: GENERAL ARRANGEMENT

DWG No: P15C-100

SCALE:

DATE: 12/12/2003

DRAWN: MDW