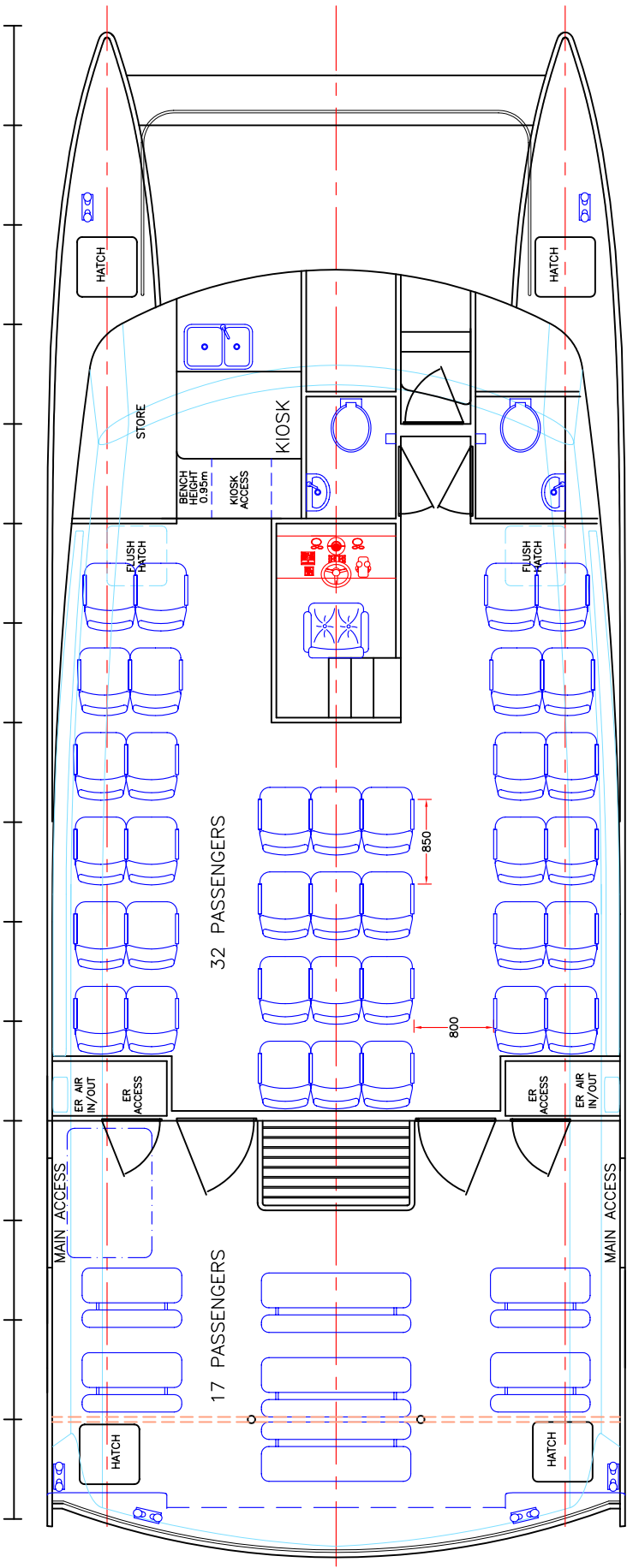
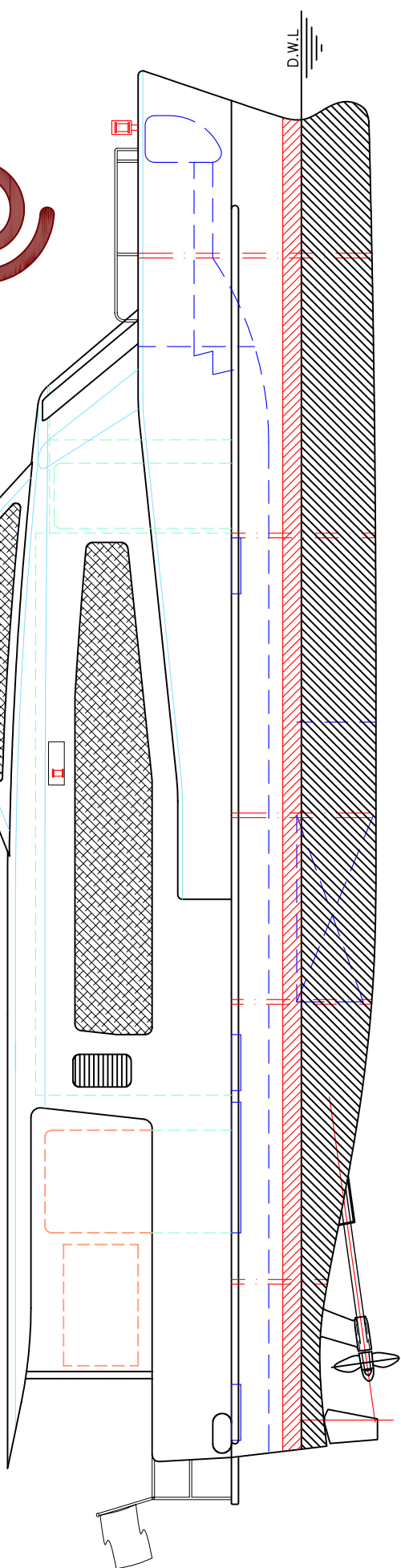


# 15m COASTAL FERRY

## 49 PASSENGERS 26 KNOTS



- LOA: 15.3m
- LOP: 14.2m
- BEAM: 5.8m
- DRAFT: 0.8m
- FUEL: 2 x 1000lts
- WATER: 200lts
- MAIN ENGINES: 2 x CUMMINS 6BTA5.9-M
- 194kW @ 2600rpm
- GEARBOX: 2 x ZF 80V (2.45:1)
- PROPULSION: 2 x 28" 4 BLADE FPP
- MAX SPEED: 26knots
- PASSENGERS: 32 + 17 aft deck



copyright ©

THIS DRAWING AND/OR SPECIFICATION IS THE PROPERTY OF MARK WILLIAMSON DESIGN PTY LTD. IT IS NOT TO BE USED BY OR DISCLOSED TO ANY THIRD PERSON WITHOUT THE EXPRESSED PERMISSION OF MARK WILLIAMSON DESIGN PTY LTD.

**MARK WILLIAMSON DESIGN**  
*Consulting Naval Architects & Mechanical Engineers*

48 Sweetgum St, Ashmore, Queensland 4214, Australia  
 Ph: 617 5597 3521 Fax: 617 5597 3529 www.mwdesign.net.au

15m CATAMARAN FERRY

TITLE: GENERAL ARRANGEMENT	
DWG No: P15C-100	SCALE:
DATE: 12/12/2003	DRAWN: MDW