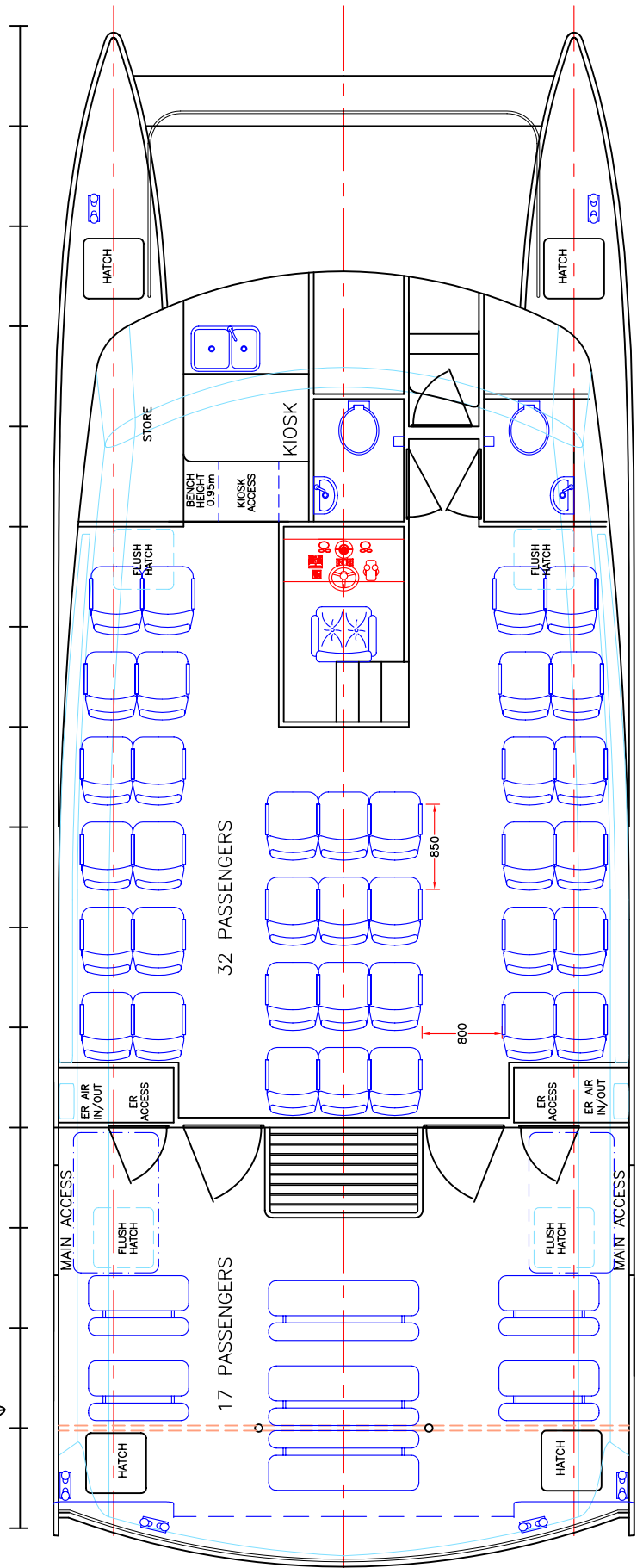
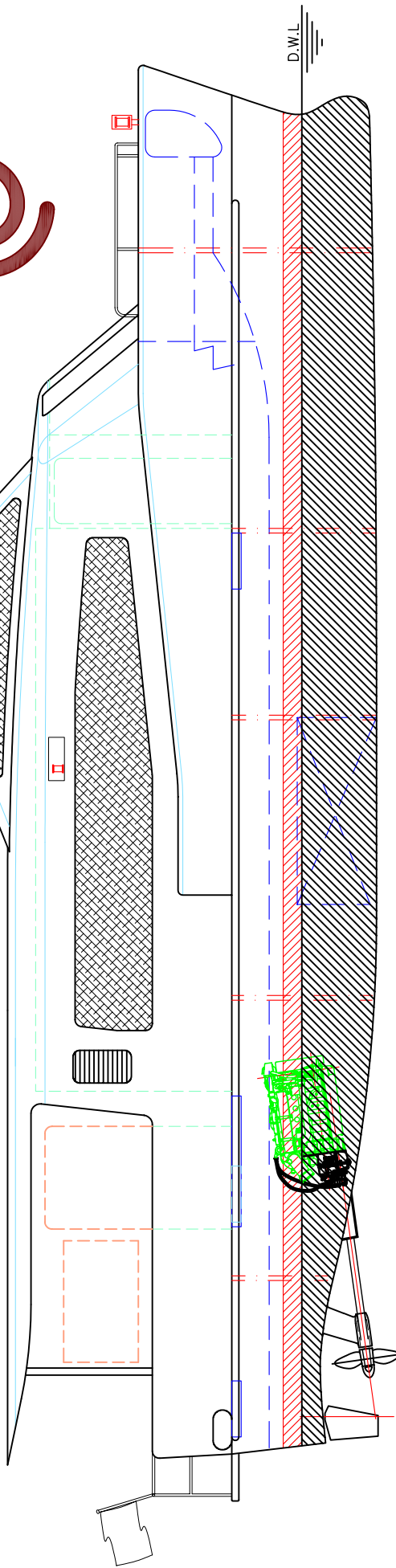


15m COASTAL FERRY 49 PASSENGERS 26 KNOTS



LOA: 15.3m
 LOP: 14.2m
 BEAM: 5.8m
 DRAFT: 0.8m
 FUEL: 2 x 1000lts
 WATER: 200lts
 MAIN ENGINES: 2 x CUMMINS 6BTA5.9-M
 194kW @ 2600rpm
 GEARBOX: 2 x ZF 280 (2.478:1)
 PROPULSION: 2 x 28" 4 BLADE FPP
 MAX SPEED: 26knots
 PASSENGERS: 32 + 17 aft deck



copyright ©

THIS DRAWING AND/OR SPECIFICATION IS THE PROPERTY OF MARK WILLIAMSON DESIGN PTY LTD. IT IS NOT TO BE USED BY OR DISCLOSED TO ANY THIRD PERSON WITHOUT THE EXPRESSED PERMISSION OF MARK WILLIAMSON DESIGN PTY LTD.

MARK WILLIAMSON DESIGN
Consulting Naval Architects & Mechanical Engineers

48 Sweetgum St, Ashmore, Queensland 4214, Australia
Ph: 617 5597 3521 Fax: 617 5597 3529 www.mwdesign.net.au

15m CATAMARAN FERRY

TITLE: GENERAL ARRANGEMENT

DWG No: P15C-100

SCALE:

DATE: 9/2/2004

DRAWN: MDW