

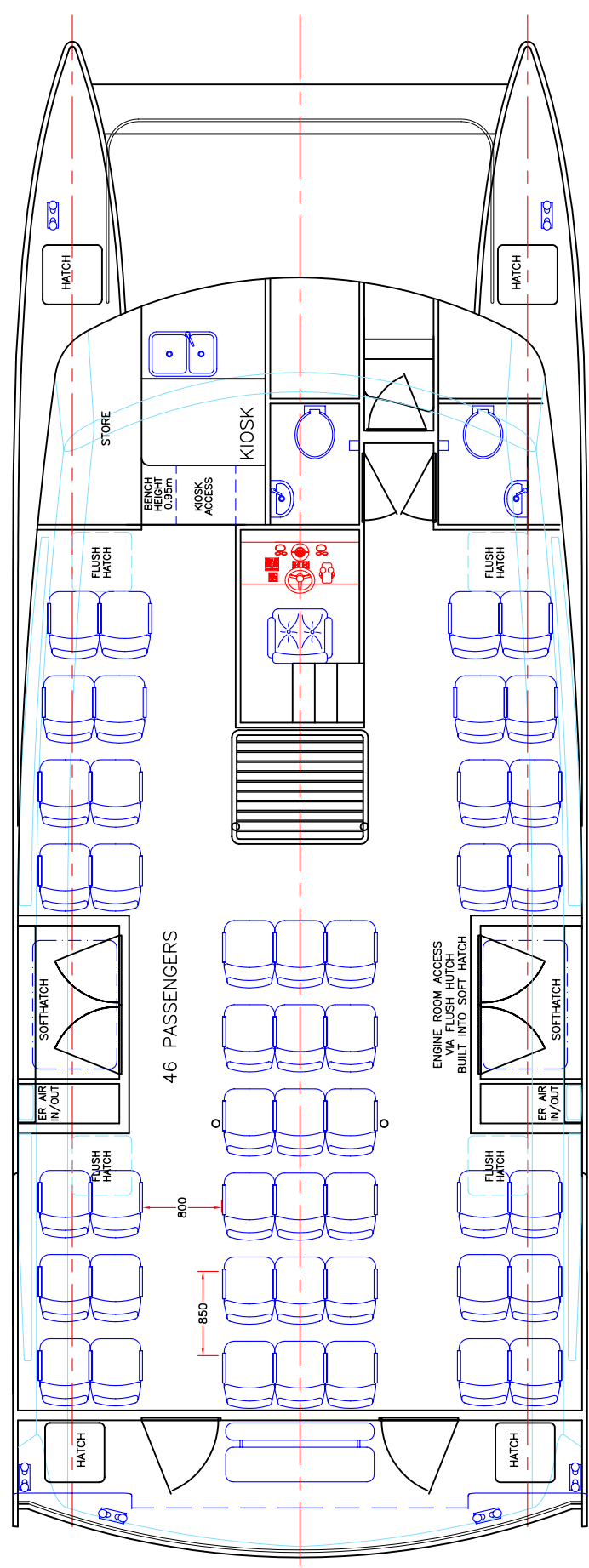
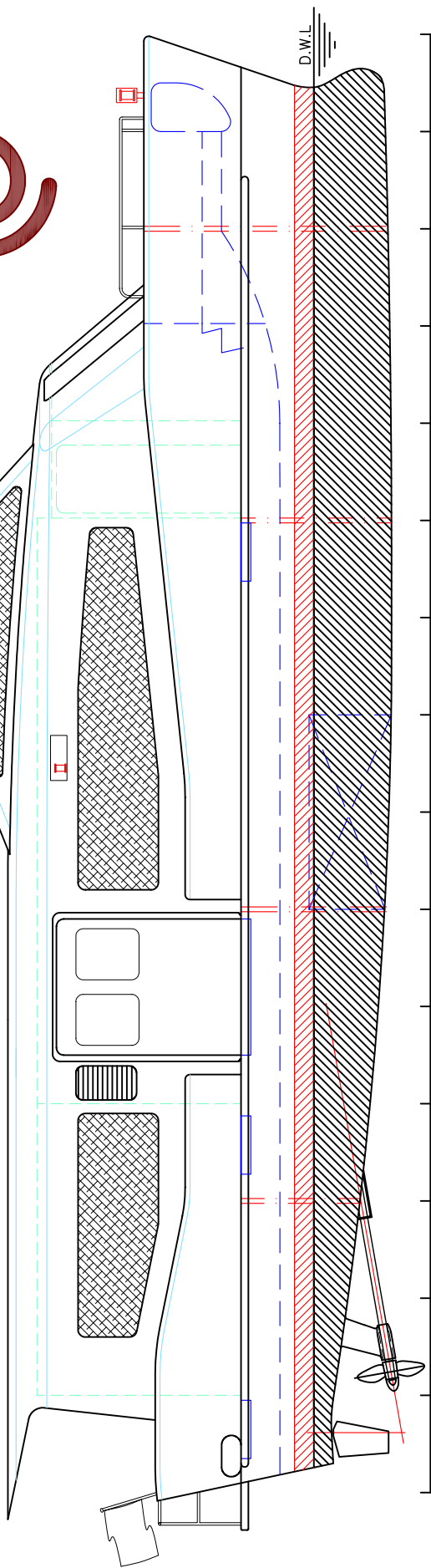
15m COASTAL FERRY

49 PASSENGERS 26 KNOTS



MAIN ENGINES: 2 x CUMMINS 6BTA5.9-M
 194kW @ 2600rpm
GEARBOX: 2 x ZF 80A (2.45:1)
PROPULSION: 2 x 28" 4 BLADE FPP
MAX SPEED: 26knots
PASSENGERS: 46 + 3 aft deck

LOA: 15.3m
LOP: 14.2m
BEAM: 5.8m
DRAFT: 0.8m
FUEL: 2 x 1000lts
WATER: 200lts



copyright ©

THIS DRAWING AND/OR SPECIFICATION IS THE PROPERTY OF MARK WILLIAMSON DESIGN PTY LTD. IT IS NOT TO BE USED BY OR DISCLOSED TO ANY THIRD PERSON WITHOUT THE EXPRESSED PERMISSION OF MARK WILLIAMSON DESIGN PTY LTD.

MARK WILLIAMSON DESIGN
Consulting Naval Architects & Mechanical Engineers

48 Sweetgum St, Ashmore, Queensland 4214, Australia
 Ph: 617 5597 3521 Fax: 617 5597 3529 www.mwdesign.net.au

15m CATAMARAN FERRY	
TITLE: GENERAL ARRANGEMENT	
DWG No: P15B-100	SCALE:
DATE: 9/12/2003	DRAWN: MDW