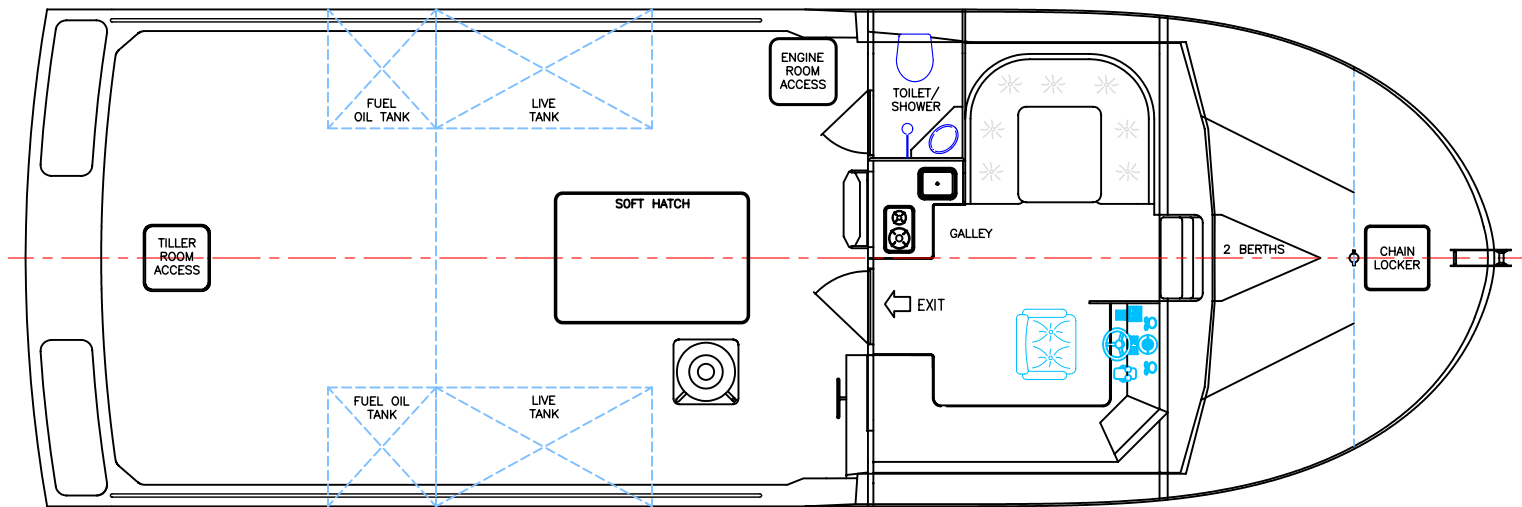
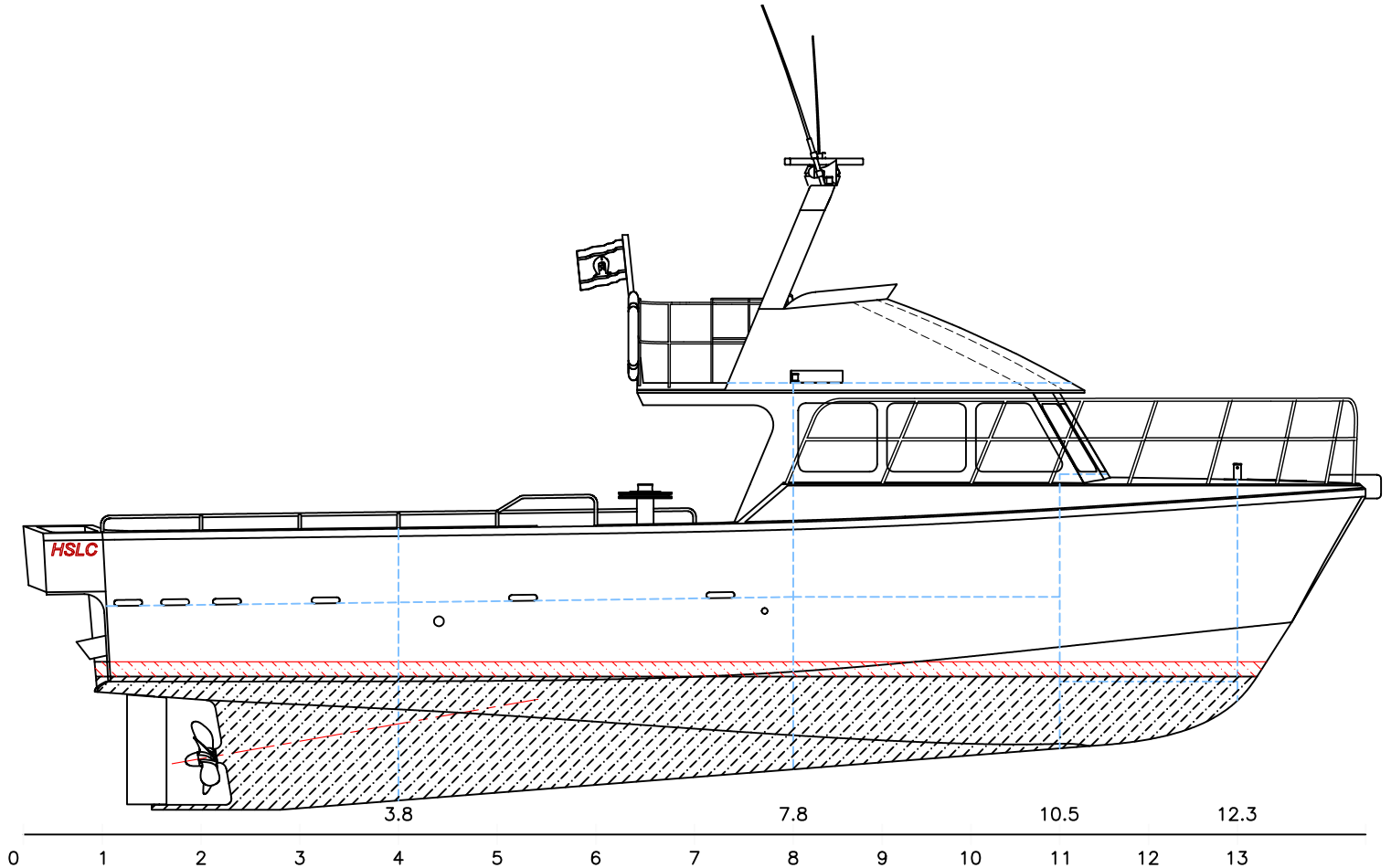


13.6m CRAY BOAT



PRINCIPAL DATA

Length Overall	13.60 metres	Main Engines	MAN D2848 LE401
Length WL	11.80 metres		490kW @ 2100rpm
Beam	4.60 metres	Gearbox	MG5145A 2.448:1 ratio
Draft	1.4 metres	Propulsion	1 x 28" fixed pitch
Construction	Marine Grade		five blade prop
	Aluminium	Fuel Capacity	1,500 litres
Maximum Speed	26 knots	Freshwater	100 litres
Cruising Speed	21 knots		

copyright ©

THIS DRAWING AND/OR SPECIFICATION IS THE PROPERTY OF MARK WILLIAMSON DESIGN PTY LTD. IT IS NOT TO BE USED BY OR DISCLOSED TO ANY THIRD PERSON WITHOUT THE EXPRESSED PERMISSION OF MARK WILLIAMSON DESIGN PTY LTD.

MARK WILLIAMSON DESIGN
Consulting Naval Architects & Mechanical Engineers

48 Sweetgum St, Ashmore, Queensland 4214, Australia
Ph: 617 5597 3521 Fax: 617 5597 3529 www.mwdesign.net.au

VESSEL: 13.6m CRAY BOAT

TITLE: GENERAL ARRANGEMENT

DWG No: C14-100

SCALE:

DATE: 7/4/2003

DRAWN: MDW