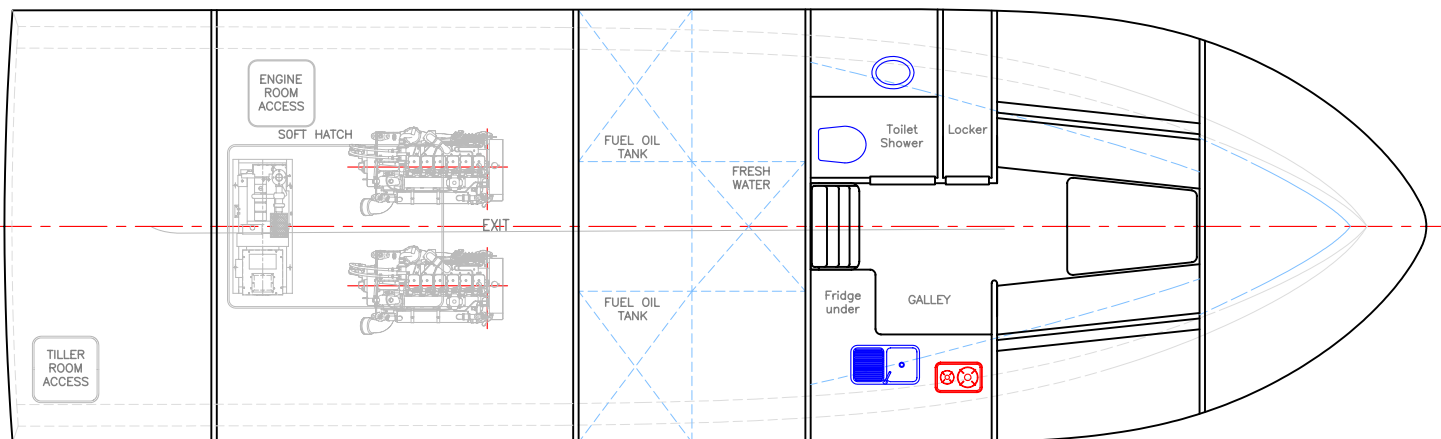
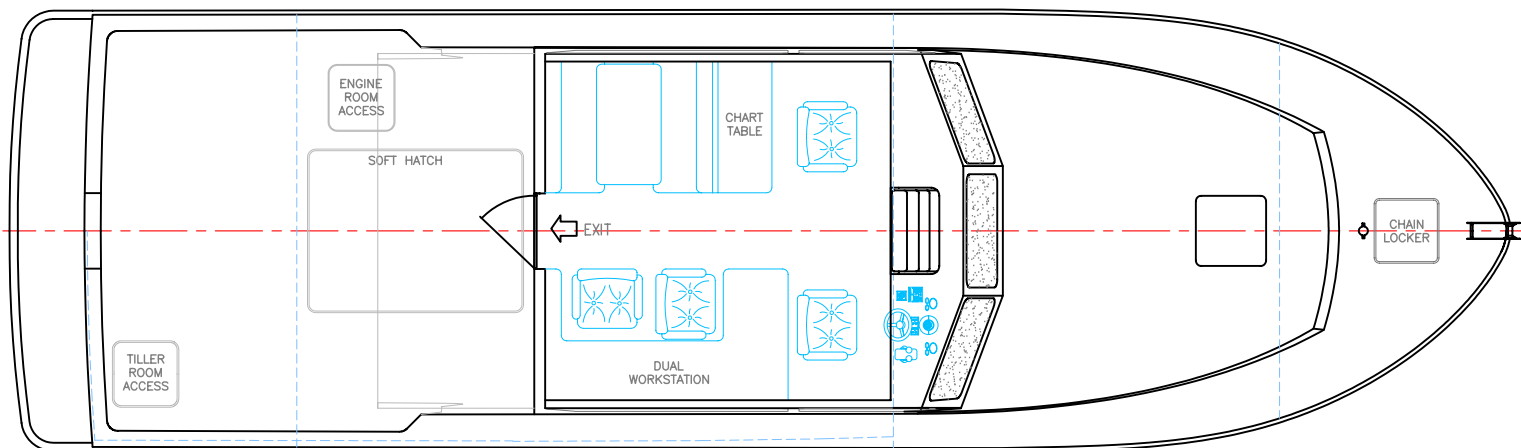
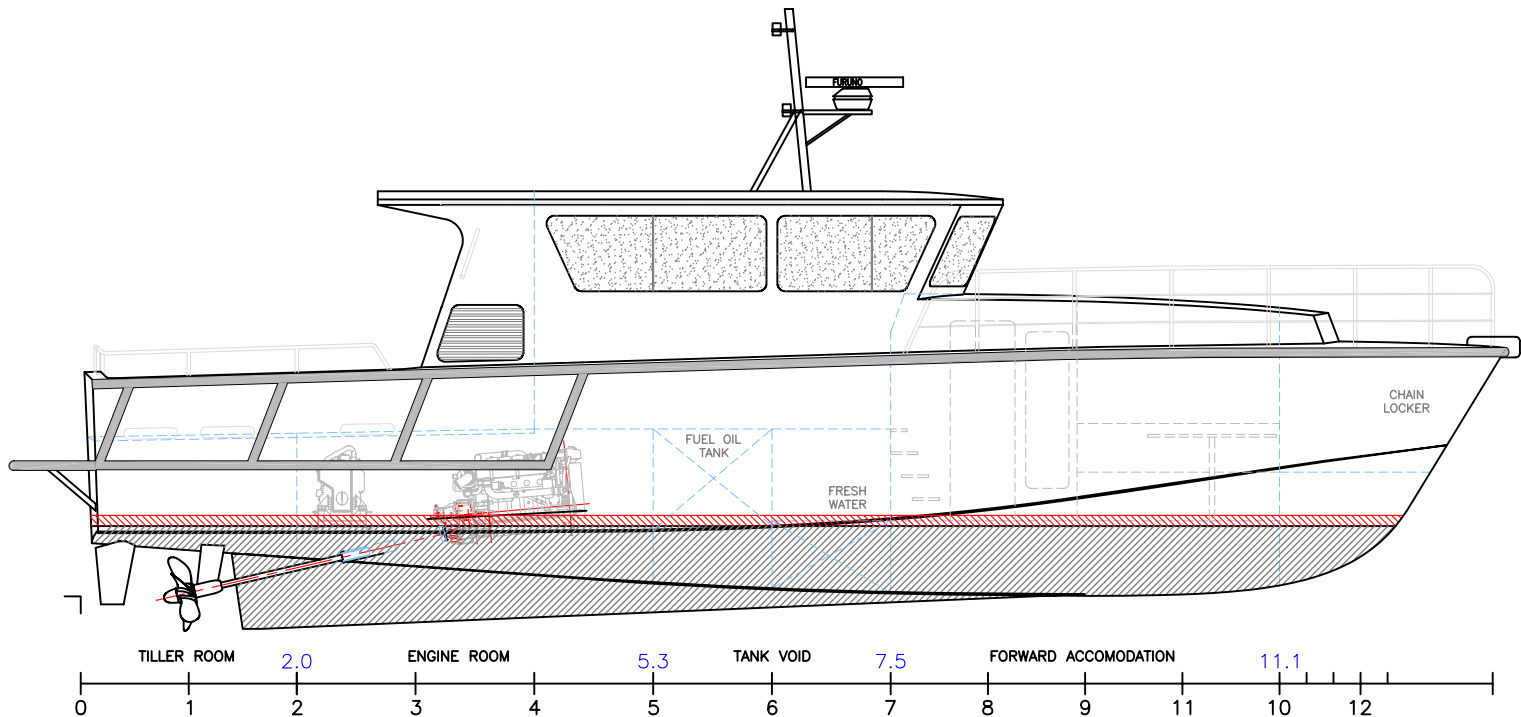


# 13.2m SURVEY VESSEL



Length Overall 14.00 metres  
 Length Moulded 13.20 metres  
 Length WL 12.10 metres  
 Beam 4.00 metres  
 Draft 1.0 metres  
 Construction Marine Grade Aluminium  
 Maximum Speed 23 knots  
 Cruising Speed 12 knots

Main Engines 2 x CUMMINS 6BTA-M  
 235kW @ 2800rpm  
 Gearbox ZF 80A 2.5:1 ratio  
 Propulsion 2 x 26" fixed pitch  
 four blade prop  
 Fuel Capacity 2,500 litres  
 Freshwater 500 litres  
 Aft Deck Area 14.4 m<sup>2</sup>

copyright ©

THIS DRAWING AND/OR SPECIFICATION IS THE PROPERTY OF MARK WILLIAMSON DESIGN PTY LTD. IT IS NOT TO BE USED BY OR DISCLOSED TO ANY THIRD PERSON WITHOUT THE EXPRESSED PERMISSION OF MARK WILLIAMSON DESIGN PTY LTD.

**MARK WILLIAMSON DESIGN**  
*Consulting Naval Architects & Mechanical Engineers*

48 Sweetgum St, Ashmore, Queensland 4214, Australia  
 Ph: 617 5597 3521 Fax: 617 5597 3529 www.mwdesign.net.au

VESSEL: 13m SURVEY VESSEL

TITLE: GENERAL ARRANGEMENT

DWG No: S13-100C

SCALE: 1:70

DATE: 26/4/2005

DRAWN: MDW