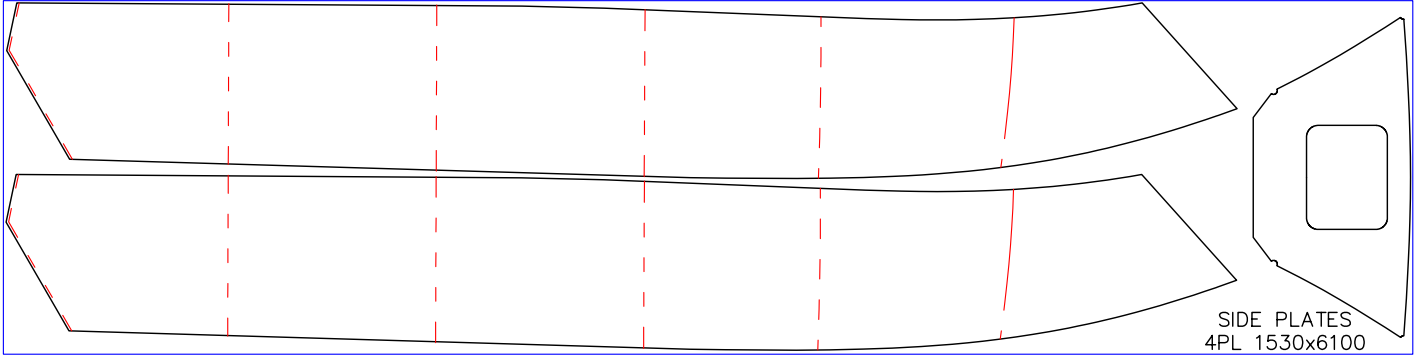
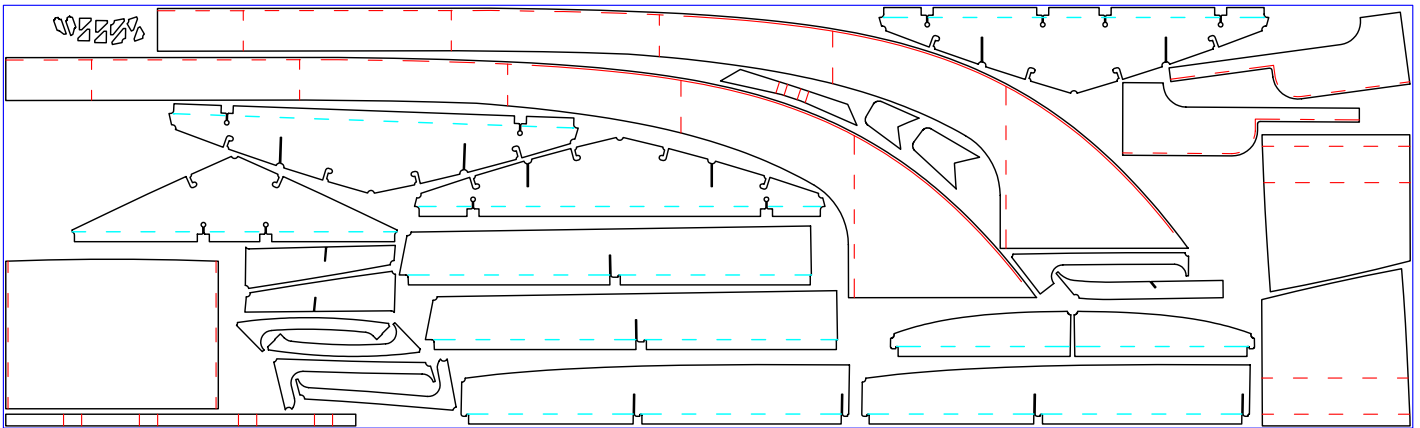


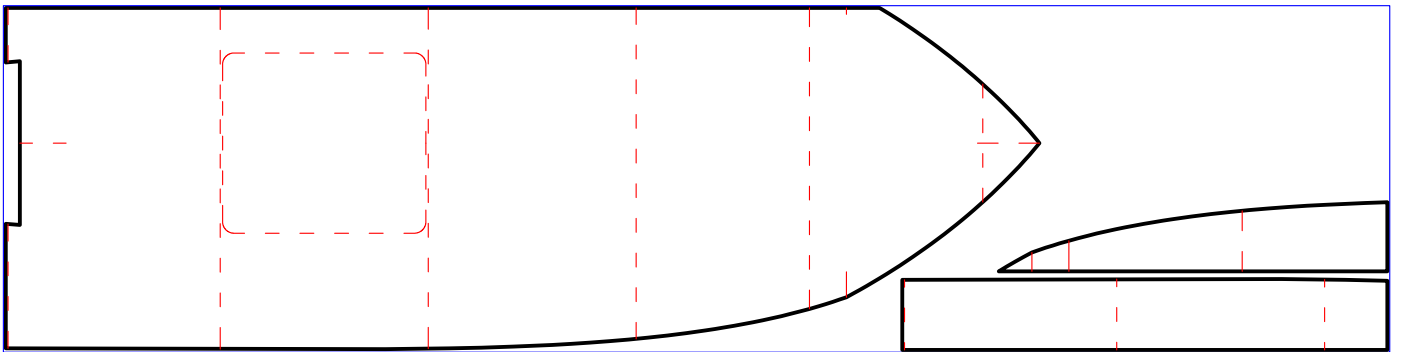
BOTTOM PLATES
5PL 1830x6100



SIDE PLATES
4PL 1530x6100

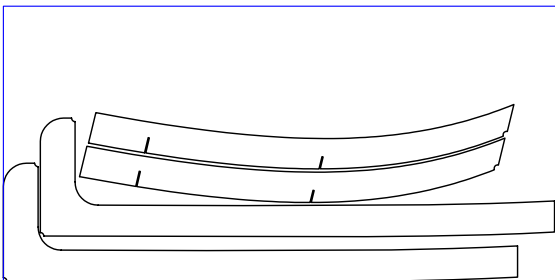


MISC PLATES
4PL 1830x6100

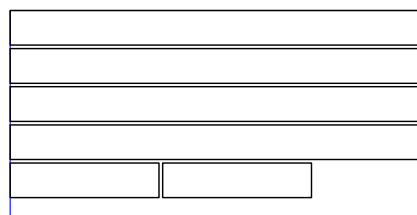


MISC PLATES
3PL 1200x2400

DECK PLATE
3PL TREADPLATE
1500x6000



MISC PLATES
3PL 900x1800



Extrusions

50x4.5x14 BF	7.6m
50x50x4 T	6.75m
32x3 Tube	19.75m
16 Solid Bar	4.25m

copyright ©

THIS DRAWING AND/OR SPECIFICATION IS THE PROPERTY OF MARK WILLIAMSON DESIGN PTY LTD. IT IS NOT TO BE USED BY OR DISCLOSED TO ANY THIRD PERSON WITHOUT THE EXPRESSED PERMISSION OF MARK WILLIAMSON DESIGN PTY LTD.

MARK WILLIAMSON DESIGN

Consulting Naval Architects & Mechanical Engineers

48 Sweetgum St, Ashmore, Queensland 4214, Australia

Ph: 617 5597 3521 Fax: 617 5597 3529 www.mwdesign.net.au

VESSEL: 5.2m CENTRE CONSOLE

TITLE: PARTS 5pl, 4pl, 3pl, 3pl

DWG No: P52-105

SCALE:

DATE: 17/6/2004

DRAWN: MDW